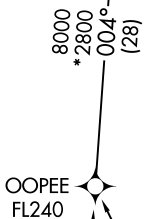
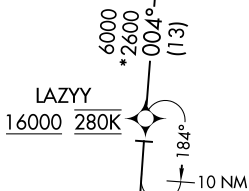


BLUEM FIVE ARRIVAL (RNAV) Transition Routes

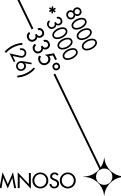
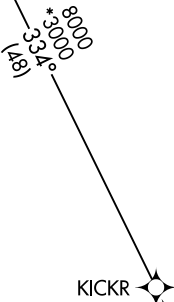
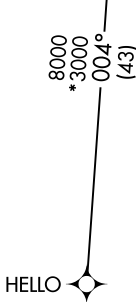
MINNEAPOLIS APP CON
135.475 335.5
D-ATIS
135.35 239.275

<p>BLUEM 10000 280K</p>		<p>See following page for Arrival Routes.</p>
-----------------------------	--	---

RNAV 1 - DME/DME/IRU or GPS.
RADAR required.



- NOTE: Jet aircraft only.
- NOTE: Expect "descend via" clearance and runway transition assignment by Center. Approach will assign landing runway.
- NOTE: HELLO Transition: do not file, to be assigned by ATC.
- NOTE: Jet aircraft descend via Mach number until 280K, if unable, advise ATC.



(CONTINUED ON FOLLOWING PAGE)

- HELLO TRANSITION (HELLO.BLUEM5)
- KICKR TRANSITION (KICKR.BLUEM5)
- LAZYY TRANSITION (LAZYY.BLUEM5)
- MNOSO TRANSITION (MNOSO.BLUEM5)
- OOPEE TRANSITION (OOPEE.BLUEM5)

NOTE: Chart note to scale.

NC-1, 14 MAY 2026 to 11 JUN 2026

NC-1, 14 MAY 2026 to 11 JUN 2026

BLUEM FIVE ARRIVAL (RNAV) Transition Routes

BLUEM FIVE ARRIVAL (RNAV) Arrival Routes

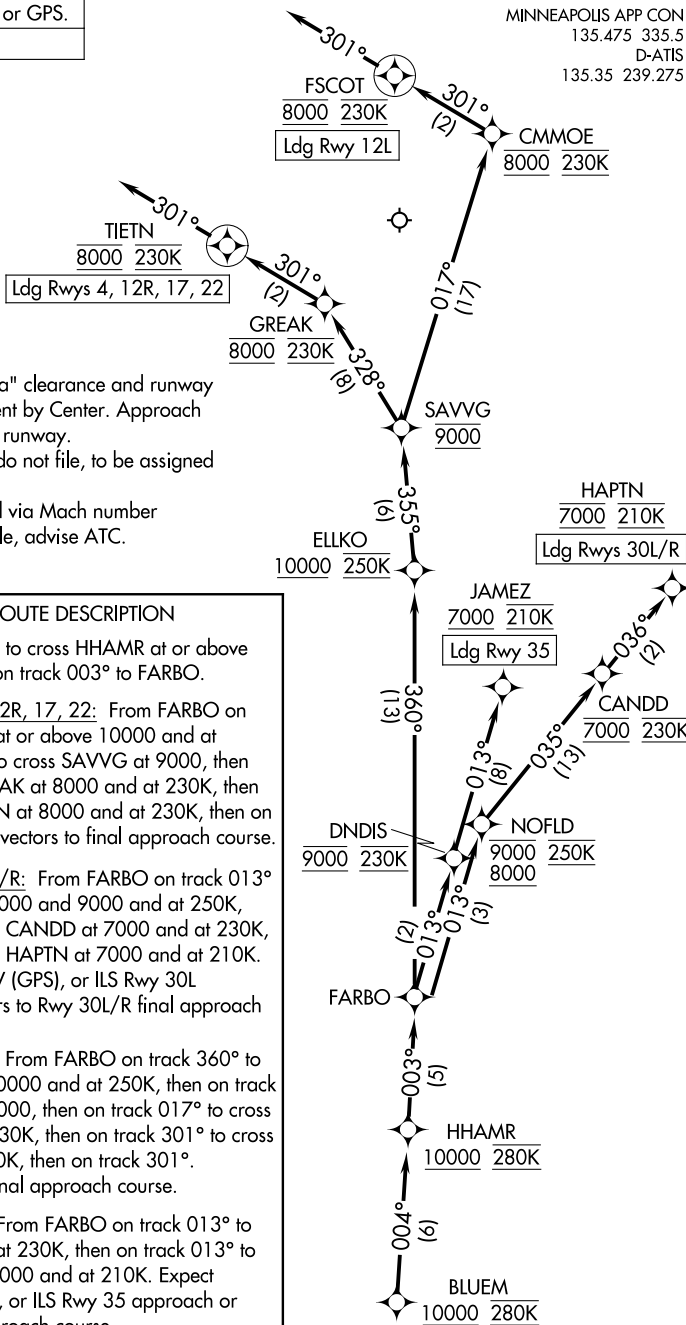
AL-264 (FAA)

MINNEAPOLIS, MINNESOTA

RNAV 1 - DME/DME/IRU or GPS.

RADAR required.

MINNEAPOLIS APP CON
135.475 335.5
D-ATIS
135.35 239.275



- NOTE: Jet aircraft only.
- NOTE: Expect "descend via" clearance and runway transition assignment by Center. Approach will assign landing runway.
- NOTE: HELLO Transition: do not file, to be assigned by ATC.
- NOTE: Jet aircraft descend via Mach number until 280K, if unable, advise ATC.
- NOTE: Chart not to scale.

ARRIVAL ROUTE DESCRIPTION

From BLUEM on track 004° to cross HHAMR at or above 10000 and at 280K, then on track 003° to FARBO.

LANDING RUNWAYS 4, 12R, 17, 22: From FARBO on track 360° to cross ELLKO at or above 10000 and at 250K, then on track 355° to cross SAVVG at 9000, then on track 328° to cross GREAK at 8000 and at 230K, then on track 301° to cross TIETN at 8000 and at 230K, then on track 301°.

LANDING RUNWAYS 30L/R: From FARBO on track 013° to cross NOFLD between 8000 and 9000 and at 250K, then on track 035° to cross CANDD at 7000 and at 230K, then on track 036° to cross HAPTN at 7000 and at 210K. Expect RNAV (RNP), RNAV (GPS), or ILS Rwy 30L approach or RADAR vectors to Rwy 30L/R final approach course.

LANDING RUNWAY 12L: From FARBO on track 360° to cross ELLKO at or above 10000 and at 250K, then on track 355° to cross SAVVG at 9000, then on track 301° to cross CMMOE at 8000 and at 230K, then on track 301° to cross FSCOT at 8000 and at 230K, then on track 301°.

LANDING RUNWAY 35: From FARBO on track 013° to cross DNDIS at 9000 and at 230K, then on track 013° to cross JAMEZ at or above 7000 and at 210K. Expect RNAV (RNP), RNAV (GPS), or ILS Rwy 35 approach or RADAR vectors to final approach course.

NC-1, 14 MAY 2026 to 11 JUN 2026

NC-1, 14 MAY 2026 to 11 JUN 2026

BLUEM FIVE ARRIVAL (RNAV) Arrival Routes

MINNEAPOLIS, MINNESOTA