

MINNEAPOLIS DEP CON  
SOUTH/EAST 124.7 284.7  
NORTH/WEST 125.75 335.65  
D-ATIS DEP 120.8  
CLNC DEL 133.2  
CPDLC  
MINNEAPOLIS TOWER  
123.95 273.55 (12L-30R)  
126.7 273.55 (12R-30L, 4-22)  
123.675 273.55 (17-35)

**TAKEOFF MINIMUMS:**

Rwys 4, 12R, 17, 22, 30L/R: Standard.

Rwy 12L: 300-1½ or standard with minimum climb of 207' per NM to 1100, or alternatively, with standard takeoff minimums and a normal 200' per NM climb gradient, takeoff must occur no later than 1300' prior to DER.

Rwy 35: Standard with minimum climb of 219' per NM to 2100.

**TOP ALTITUDE:  
(JETS) 7000/  
(PROPS) 5000**

GOPHER  
117.3 GEP :--  
Chan 120

Rwy 30L/R  
(For assigned 220° CW 360°)  
3500

Rwy 17  
(For assigned 230° CW 285°)  
3500

FLYING CLOUD  
117.Z FCM :--  
Chan 124

MINNEAPOLIS  
115.3 MSP :--  
Chan 100

FARMINGTON  
115.7 FGT :--  
Chan 104

EAU CLAIRE  
113.65 EAU :--  
Chan 83(Y)

FALLS 1 MOA

R-6901A

9000  
+3500  
116°  
(103)

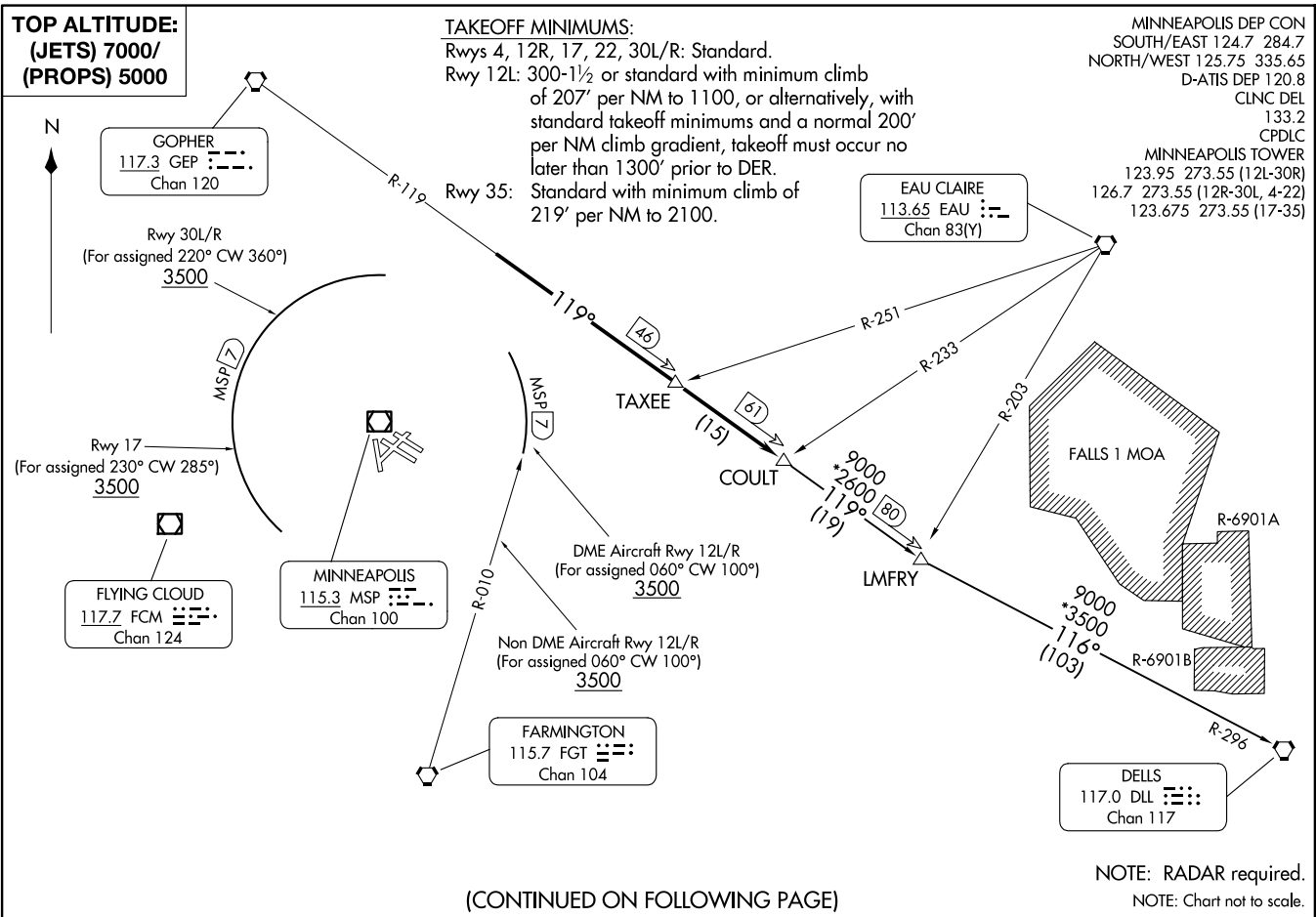
R-6901B

DELLS  
117.0 DLL :--  
Chan 117

NOTE: RADAR required.

NOTE: Chart not to scale.

(CONTINUED ON FOLLOWING PAGE)



# COULT SEVEN DEPARTURE



## DEPARTURE ROUTE DESCRIPTION

TAKEOFF ALL RUNWAYS: Fly assigned heading for RADAR vectors to intercept GEP R-119 to COULT INT/GEP 61 DME. Turbojet aircraft maintain 7000 or lower assigned altitude, all other aircraft maintain 5000 or lower assigned altitude.

DME EQUIPPED AIRCRAFT RUNWAYS 12L/R DEPARTURES: For assigned headings from 060° clockwise to 100°. Cross MSP 7 DME at or above 3500, maintain assigned altitude. If unable to comply, advise ATC as soon as possible prior to departure. Thence . . . .

NON-DME EQUIPPED AIRCRAFT RUNWAYS 12L/R DEPARTURES: For assigned headings from 060° clockwise to 100°, cross FGT R-010 at or above 3500, maintain assigned altitude. If unable to comply, advise ATC as soon as possible prior to departure. Thence . . . .

TAKEOFF RUNWAY 17: For assigned headings from 230° clockwise to 285°. Cross MSP 7 DME at or above 3500, maintain assigned altitude. If unable to comply, advise ATC as soon as possible prior to departure. Thence . . . .

TAKEOFF RUNWAYS 30L/R: For assigned headings from 220° clockwise to 360°, cross MSP 7 DME at or above 3500, maintain assigned altitude. If unable to comply, advise ATC as soon as possible prior to departure. Thence . . . .

TAKEOFF RUNWAYS 4, 22, 35: Initially assigned heading, thence . . . .

. . . . on transition or assigned route. Expect clearance to filed altitude/flight level 10 (ten) minutes after departure.

DELLS TRANSITION (COULT7.DLL): From over COULT INT on GEP R-119 to LMFRY INT then on DLL R-296 to DLL VORTAC.

NC-1, 14 MAY 2026 to 11 JUN 2026

NC-1, 14 MAY 2026 to 11 JUN 2026