

LOC/DME I-PJL <b>110.7</b> Chan 44	APP CRS <b>121°</b>	Rwy Ldg TDZE <b>7620</b> <b>841</b>	Apt Elev <b>842</b>
--	------------------------	---	------------------------

# ILS RWY 12L (CAT II & III)

## MINNEAPOLIS-ST PAUL INTL/WOLD-CHAMBERLAIN (MSP)

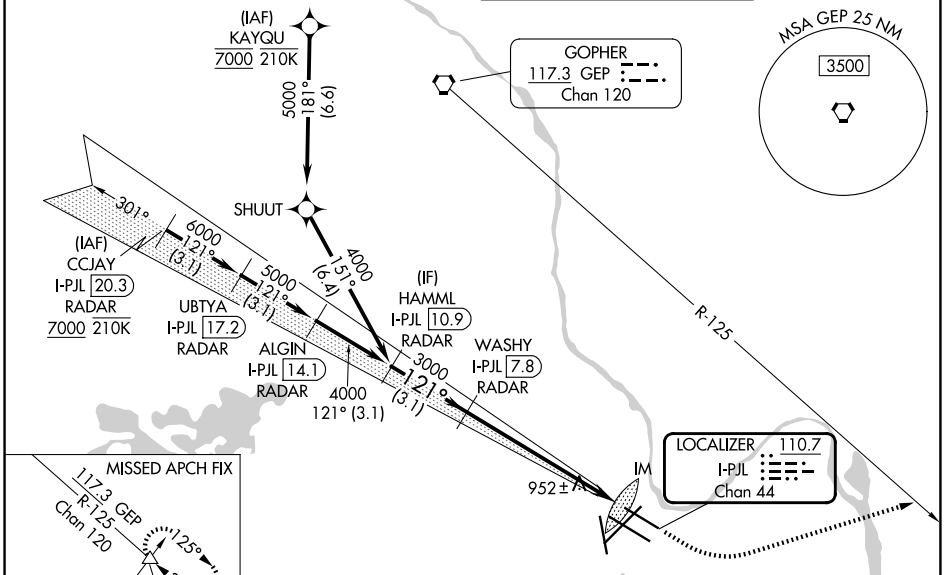
RNP APCH - GPS. From KAYQU.  
DME or RADAR required.

Simultaneous approach authorized with Rwy 12R. CAT II: RVR 1000 authorized with specific OPSPEC, MSPEC, or LOA approval and use of autoland or HUD to touchdown.

ALSF-2

MISSED APPROACH: Climb to 1300 then climbing left turn to 3000 on heading 073° and on GEP VORTAC R-125 to KANAC INT/GEP 25.2 DME and hold, continue climb-in-hold to 3000.

D-ATIS <b>135.35 239.275</b>	MINNEAPOLIS APP CON <b>118.725 335.65 (35)</b> <b>119.3 335.65 (4-22, 12L-30R, 17)</b> <b>126.95 335.65 (12R-30L)</b>	MINNEAPOLIS TOWER <b>123.675 273.55 (17-35)</b> <b>123.95 273.55 (12L-30R)</b> <b>126.7 273.55 (4-22, 12R-30L)</b>	GND CON <b>121.8 348.6 (N)</b> <b>121.9 348.6 (S)</b> <b>127.925 348.6 (W)</b>
---------------------------------	--	---	---

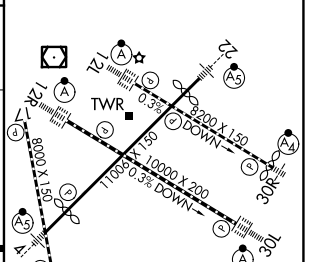
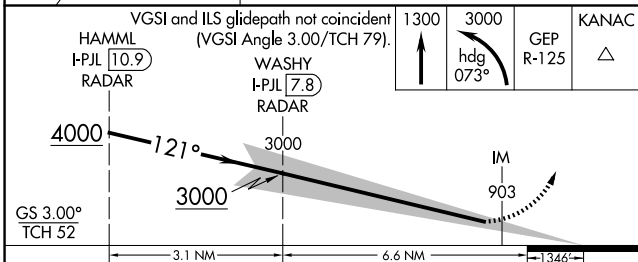


NC-1, 14 MAY 2026 to 11 JUN 2026

NC-1, 14 MAY 2026 to 11 JUN 2026



ELEV 842	<b>D</b> TDZE 841
----------	-------------------



CATEGORY	A	B	C	D
S-ILS 12L	CAT II RA 91/12 100 DA 941			
S-ILS 12L	CAT III RVR 07			

**CATEGORY II & III ILS - SPECIAL AIRCREW & AIRCRAFT CERTIFICATION REQUIRED**

HIRL all rwys  
REIL Rwy 17  
TDZL/RCLS Rwys 12L, 12R, 30L, and 35