

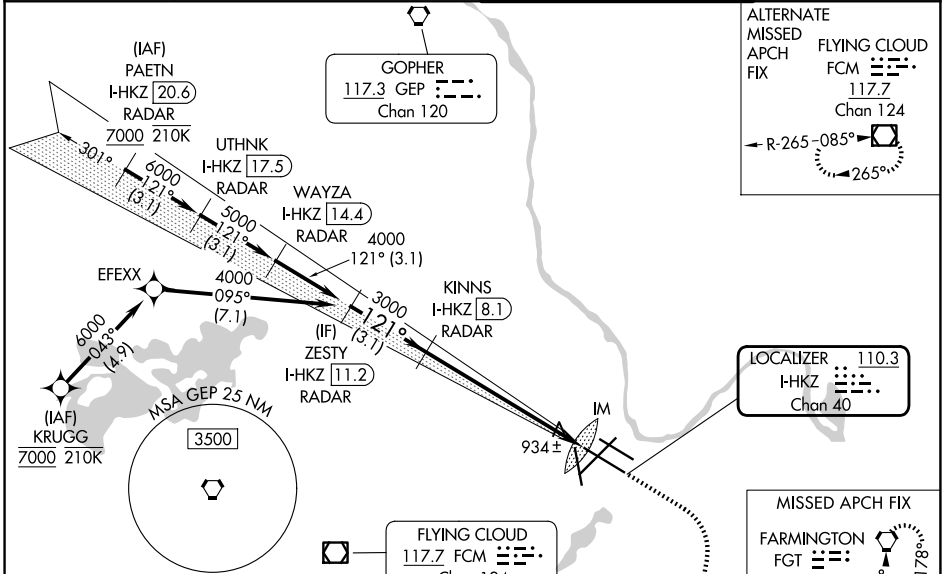
LOC/DME I-HKZ 110.3 Chan 40	APP CRS 121°	Rwy Ldg TDZE 842 Apt Elev 842	10000
---	------------------------	---	--------------

ILS RWY 12R (CAT II & III)

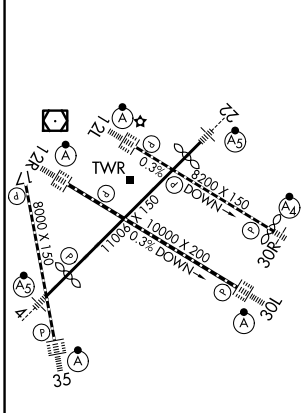
MINNEAPOLIS-ST PAUL INTL/WOLD-CHAMBERLAIN (MSP)

RNP APCH - GPS. From KRUGG. DME or RADAR required.	ALSF-2 	MISSED APPROACH: Climb to 3000 then climbing right turn to 3000 direct FGT VORTAC and hold.
<p>Simultaneous approach authorized with Rwy 12L. CAT II: RVR 1000 authorized with specific OPSPEC, MSPEC, or LOA approval and use of autoland or HUD to touchdown.</p>		

D-ATIS 135.35 239.275	MINNEAPOLIS APP CON 118.725 335.65 (35) 119.3 335.65 (4-22, 12L-30R, 17) 126.95 335.65 (12R-30L)	MINNEAPOLIS TOWER 123.675 273.55 (17-35) 123.95 273.55 (12L-30R) 126.7 273.55 (4-22, 12R-30L)	GND CON 121.8 348.6 (N) 121.9 348.6 (S) 127.925 348.6 (W)
---------------------------------	--	---	---



ELEV 842	D	TDZE 842
----------	----------	----------



GS 3.00° TCH 50	4000	121°	3000	IM	937
	3.1 NM		6.6 NM		1031
CATEGORY	A	B	C	D	
S-ILS 12R	CAT II RA 102/12 100 DA 942				
S-ILS 12R	CAT III RVR 06				

CATEGORY II & III ILS - SPECIAL AIRCREW & AIRCRAFT CERTIFICATION REQUIRED

HIRL all rwys
REIL Rwy 17
TDZL/RCLS Rwys 12L, 12R, 30L, and 35

ILS RWY 12R (CAT II & III)

NC-1, 14 MAY 2026 to 11 JUN 2026

NC-1, 14 MAY 2026 to 11 JUN 2026