

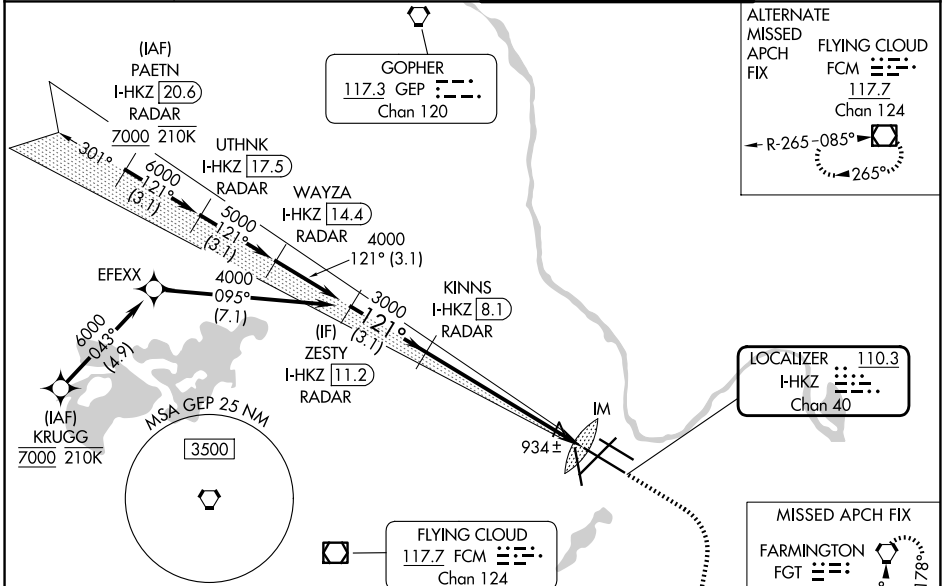
LOC/DME I-HKZ 110.3 Chan 40	APP CRS 121°	Rwy Ldg TDZE 842 Apt Elev 842	10000
---	------------------------	---	--------------

ILS RWY 12R (SA CAT I)

MINNEAPOLIS-ST PAUL INTL/WOLD-CHAMBERLAIN (MSP)

RNP APCH - GPS. From KRUGG.	ALSIF-2 	MISSED APPROACH: Climb to 1300 then climbing right turn to 3000 direct FGT VORTAC and hold.
DME or RADAR required.		
Simultaneous approach authorized with Rwy 12L. Requires specific OPSPEC, MSPEC, or LOA approval and use of HUD to DH.		

D-ATIS 135.35 239.275	MINNEAPOLIS APP CON 118.725 335.65 (35) 119.3 335.65 (4-22, 12L-30R, 17) 126.95 335.65 (12R-30L)	MINNEAPOLIS TOWER 123.675 273.55 (17-35) 123.95 273.55 (12L-30R) 126.7 273.55 (4-22, 12R-30L)	GND CON 121.8 348.6 (N) 121.9 348.6 (S) 127.925 348.6 (W)
---------------------------------	--	---	---



ALTERNATE MISSED APCH FIX

FLYING CLOUD FCM

117.7
Chan 124

R-265-085°

265°

LOCALIZER 110.3

I-HKZ

Chan 40

MISSED APCH FIX

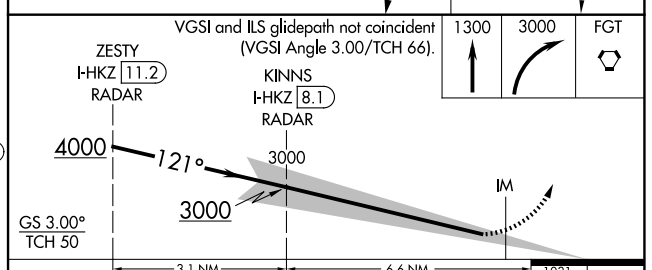
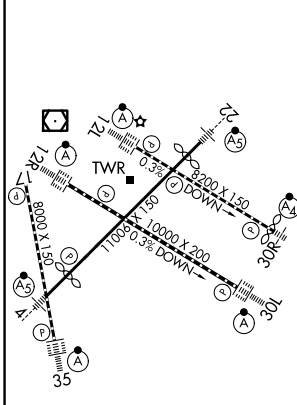
FARMINGTON FGT

115.7
Chan 104

R-178-358°

178°

ELEV 842	D	TDZE 842
----------	----------	----------



CATEGORY	A	B	C	D
S-ILS 12R	RA 168/14 150 DA 992			

SA CATEGORY I ILS - SPECIAL AIRCREW & AIRCRAFT CERTIFICATION REQUIRED

ILS RWY 12R (SA CAT I)

NC-1, 14 MAY 2026 to 11 JUN 2026

NC-1, 14 MAY 2026 to 11 JUN 2026