

LOC/DME I-HKZ 110.3 Chan 40	APP CRS 121°	Rwy Ldg 10000 TDZE 842 Apt Elev 842
---	------------------------	--

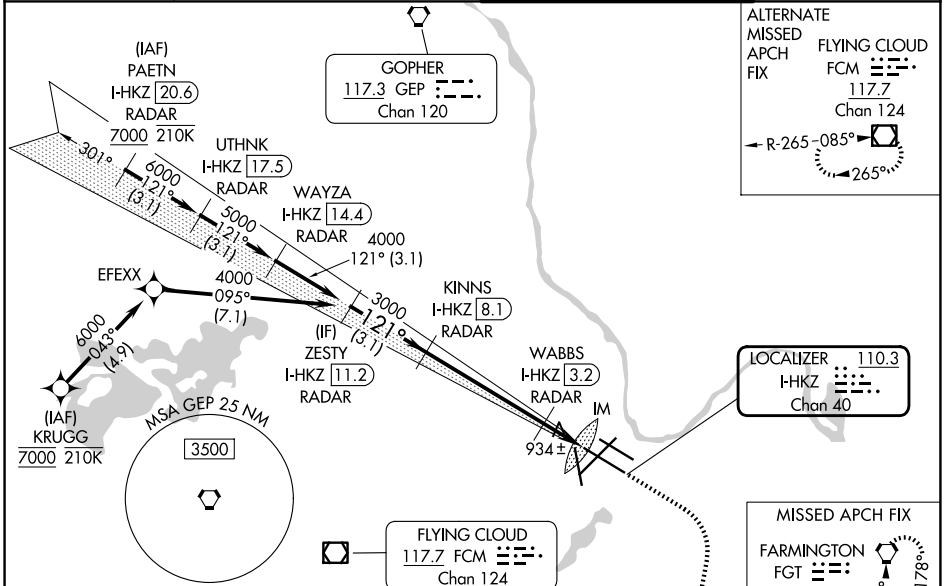
ILS or LOC RWY 12R

MINNEAPOLIS-ST PAUL INTL/WOLD-CHAMBERLAIN (MSP)

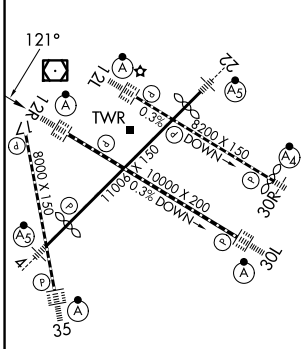
RNP APCH - GPS. From KRUGG. DME or RADAR required.	ALSF-2
Simultaneous approach authorized with Rwy 12L.	

MISSED APPROACH: Climb to 3000 then climbing right turn to 3000 direct FGT VORTAC and hold.

D-ATIS 135.35 239.275	MINNEAPOLIS APP CON 118.725 335.65 (35) 119.3 335.65 (4-22, 12L-30R, 17) 126.95 335.65 (12R-30L)	MINNEAPOLIS TOWER 123.675 273.55 (17-35) 123.95 273.55 (12L-30R) 126.7 273.55 (4-22, 12R-30L)	GND CON 121.8 348.6 (N) 121.9 348.6 (S) 127.925 348.6 (W)
---------------------------------	--	---	---



ELEV 842	D	TDZE 842
-----------------	----------	-----------------



HIRL all rwys
REIL Rwy 17
TDZL/RCLS Rws 12L, 12R, 30L, and 35
FAF to MAP 6.6 NM

Knots	60	90	120	150	180
Min:Sec	6:36	4:24	3:18	2:38	2:12

VGSI and ILS glidepath not coincident (VGSI Angle 3.00/TCH 66).

	3000	3000	1300	3000	FGT
	ZESTY I-HKZ 11.2 RADAR	KINNS I-HKZ 8.1 RADAR	WABBS I-HKZ 3.2 RADAR	I-HKZ 2.5	I-HKZ 1.5
	4000	3000	1420		
	3000				
	3.1 NM	4.9 NM	0.7 NM	0.9 NM	0.1
CATEGORY	A	B	C	D	
S-ILS 12R	1042/18 200 (200-1/2)				
S-LOC 12R	1240/24 398 (400-1/2)	1240/35 398 (400-3/8)			
CIRCLING	1360-1 518 (600-1)	1460-1 3/4 618 (700-1 3/4)	1620-2 1/2 778 (800-2 1/2)		

NC-1, 14 MAY 2026 to 11 JUN 2026

NC-1, 14 MAY 2026 to 11 JUN 2026