

LOC/DME I-MSP 110.3 Chan 40	APP CRS 301°	Rwy Ldg 10000 TDZE 823 Apt Elev 842
---	------------------------	--

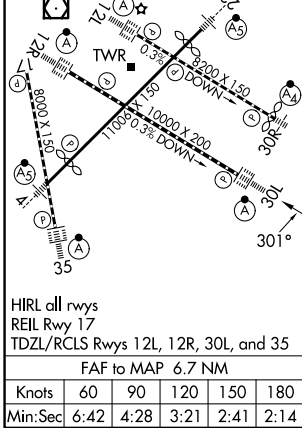
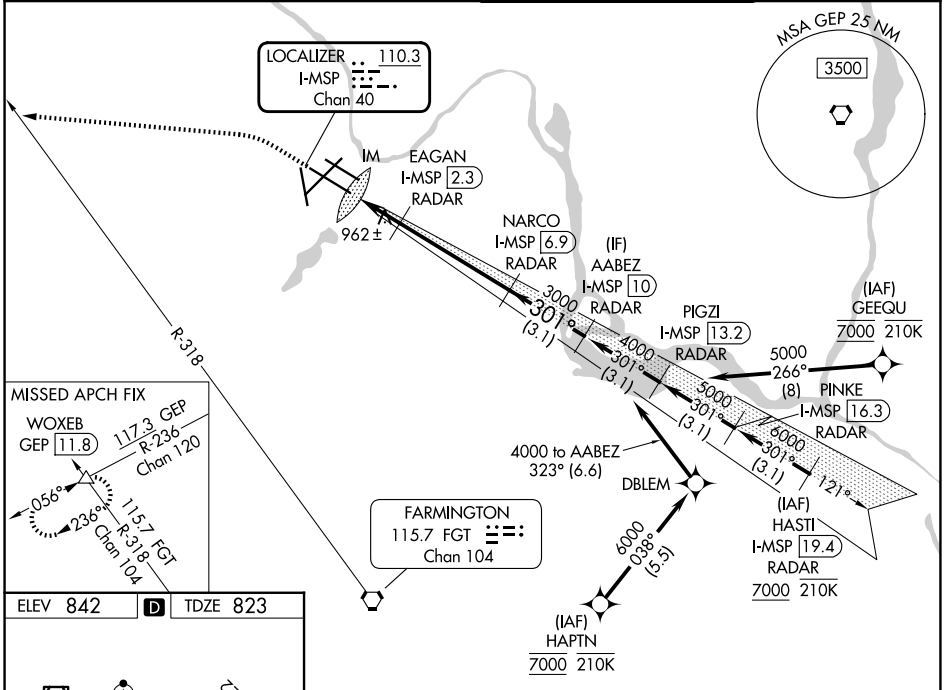
ILS or LOC RWY 30L

MINNEAPOLIS-ST PAUL INTL/WOLD-CHAMBERLAIN (MSP)

RNP APCH - GPS. From GEEQU or HAPTIN.
DME or RADAR required.
Simultaneous approaches authorized with Rwy 30R and ILS V RWY 35 (CONVERGING).

ALSF-2
MISSED APPROACH: Climb to 1300 then climbing left turn to 3000 on heading 275° and on FGT VOR/DME R-318 to WOXEB INT/GEOP VORTAC 11.8 DME and hold.

D-ATIS 135.35 239.275	MINNEAPOLIS APP CON 118.725 335.65 (35) 119.3 335.65 (4-22, 12L-30R, 17) 126.95 335.65 (12R-30L)	MINNEAPOLIS TOWER 123.675 273.55 (17-35) 123.95 273.55 (12L-30R) 126.7 273.55 (4-22, 12R-30L)	GND CON 121.8 348.6 (N) 121.9 348.6 (S) 127.925 348.6 (W)
---------------------------------	--	---	---



1300	3000	WOXEB	VGSI and ILS glidepath not coincident (VGSI Angle 3.00/TCH 78).	
↑	hdg 275°	FGT R-318	△	
EAGAN I-MSP 2.3 RADAR		NARCO I-MSP 6.9 RADAR	AABEZ I-MSP 10 RADAR	
I-MSP 0.2	I-MSP 1.2	3000	3000	
IM	1520	3000	4000	
0.2	0.8 NM	1.1 NM	4.6 NM	
CATEGORY	A	B	C	D
S-ILS 30L	1023/18			200 (200-½)
S-LOC 30L	1220/24	397 (400-½)	1220/35	397 (400-¾)
CIRCLING	1360-1	518 (600-1)	1460-1¾	1620-2½
			618 (700-1¾)	778 (800-2½)

NC-1, 14 MAY 2026 to 11 JUN 2026

NC-1, 14 MAY 2026 to 11 JUN 2026