

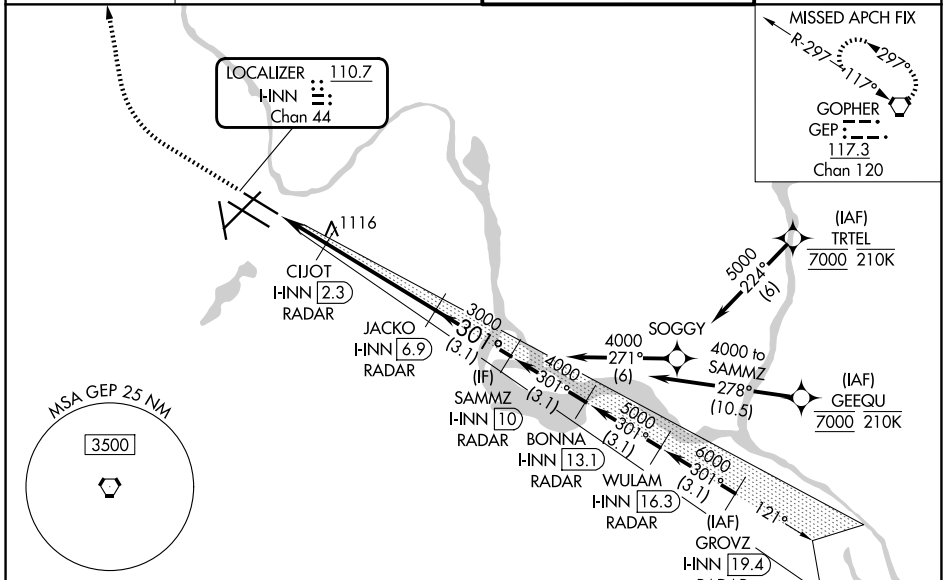
LOC/DME H-NN <b>110.7</b> Chan <b>44</b>	APP CRS <b>301°</b>	Rwy Ldg TDZE Apt Elev <b>8000</b> <b>822</b> <b>842</b>
--	------------------------	--

# ILS or LOC RWY 30R

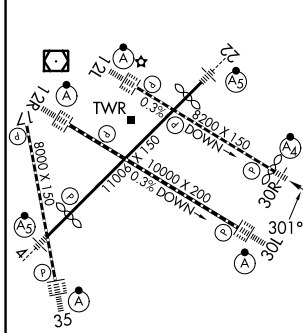
MINNEAPOLIS-ST PAUL INTL/WOLD-CHAMBERLAIN (MSP)

RNP APCH - GPS. From TRTEL or GEEQU.	MALSF A4	MISSED APPROACH: Climb to 1300 then climbing right turn to 3000 direct GEP VORTAC and hold.
DME or RADAR required.		
<p><b>⚠</b> Inop table does not apply to S-ILS 30R all Cats. Simultaneous approaches authorized with Rwy 30L and ILS V RWY 35 (CONVERGING).</p>		

D-ATIS <b>135.35 239.275</b>	MINNEAPOLIS APP CON <b>118.725 335.65 (35)</b> <b>119.3 335.65 (4-22, 12L-30R, 17)</b> <b>126.95 335.65 (12R-30L)</b>	MINNEAPOLIS TOWER <b>123.675 273.55 (17-35)</b> <b>123.95 273.55 (12L-30R)</b> <b>126.7 273.55 (4-22, 12R-30L)</b>	GND CON <b>121.8 348.6 (N)</b> <b>121.9 348.6 (S)</b> <b>127.925 348.6 (W)</b>
---------------------------------	--	---	---

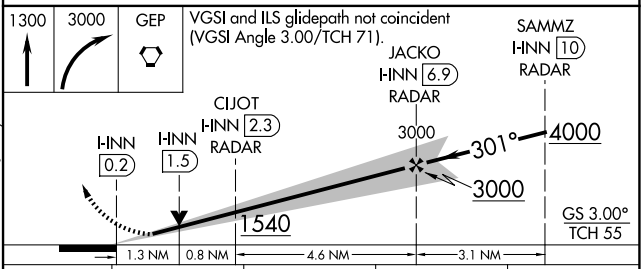


ELEV 842	<b>D</b>	TDZE 822
----------	----------	----------



HIRL all rwys  
REIL Rwy 17  
TDZL/RCLS Rwys 12L, 12R, 30L, and 35  
FAF to MAP 6.7 NM

Knots	60	90	120	150	180
Min:Sec	6:42	4:28	3:21	2:41	2:14



CATEGORY	A	B	C	D
S-ILS 30R	1072/40 250 (300-¾)			
S-LOC 30R	1320/40 498 (500-¾)	1320/60 498 (500-1½)		
CIRCLING	1360-1 518 (600-1)		1460-1¾ 618 (700-1¾)	1620-2½ 778 (800-2½)

NC-1, 14 MAY 2026 to 11 JUN 2026

NC-1, 14 MAY 2026 to 11 JUN 2026