

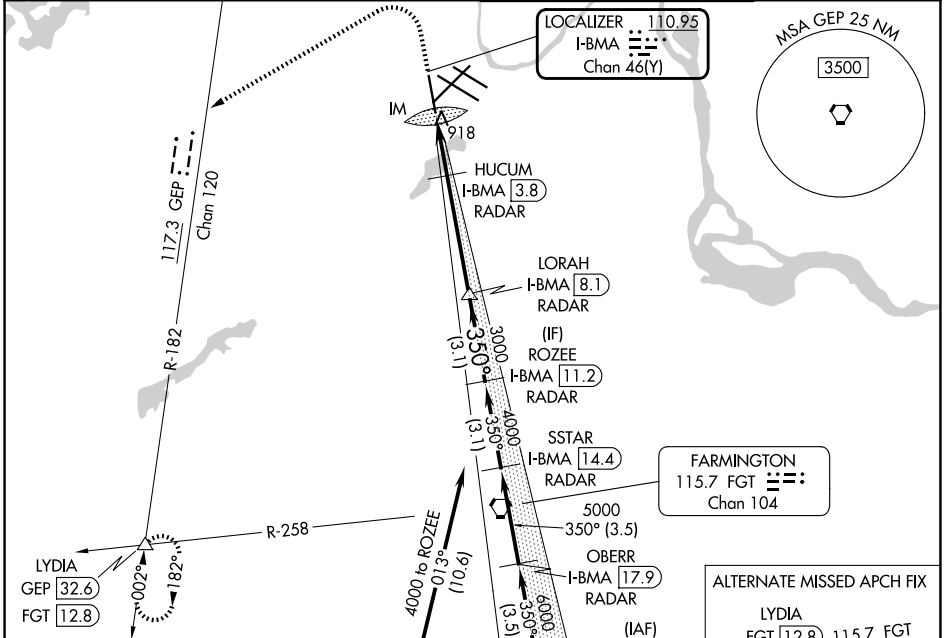
LOC/DME I-BMA 110.95 Chan 46 (Y)	APP CRS 350°	Rwy Ldg TDZE Apt Elev	8000 834 842
--	------------------------	-----------------------------	---

ILS Z or LOC RWY 35

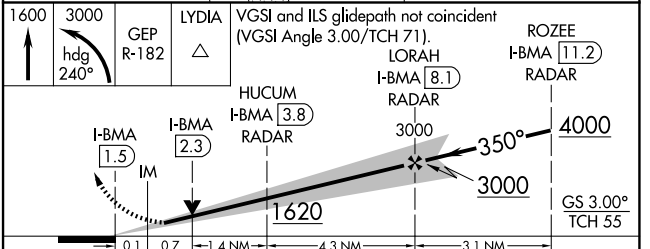
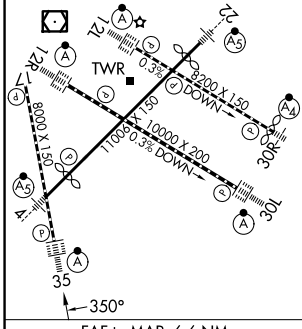
MINNEAPOLIS-ST PAUL INTL/WOLD-CHAMBERLAIN (MSP)

RNP APCH - GPS. From NNEWWW. DME or RADAR required.	ALSF-2	MISSED APPROACH: Climb to 1600 then climbing left turn to 3000 on heading 240° and on GEP VORTAC R-182 to LYDIA INT/240° DME and hold.
For inop ALS, increase S-LOC 35 Cat C/D visibility to RVR 5500.		

D-ATIS 135.35 239.275	MINNEAPOLIS APP CON 118.725 335.65 (35) 119.3 335.65 (4-22, 12L-30R, 17) 126.95 335.65 (12R-30L)	MINNEAPOLIS TOWER 123.675 273.55 (17-35) 123.95 273.55 (12L-30R) 126.7 273.55 (4-22, 12R-30L)	GND CON 121.8 348.6 (N) 121.9 348.6 (S) 127.925 348.6 (W)
---------------------------------	--	---	---



ELEV 842	TDZE 834
HIRL all rwys REIL Rwy 17 TDZL/RCLS Rwy 12L, 12R, 30L, and 35	



CATEGORY	A	B	C	D
S-ILS 35	1034/18 200 (200-½)			
S-LOC 35	1180/24 346 (400-½)	1180/30 346 (400-¾)		
CIRCLING	1360-1 518 (600-1)	1460-1¾ 618 (700-1¾)	1620-2½ 778 (800-2½)	

NC-1, 14 MAY 2026 to 11 JUN 2026

NC-1, 14 MAY 2026 to 11 JUN 2026