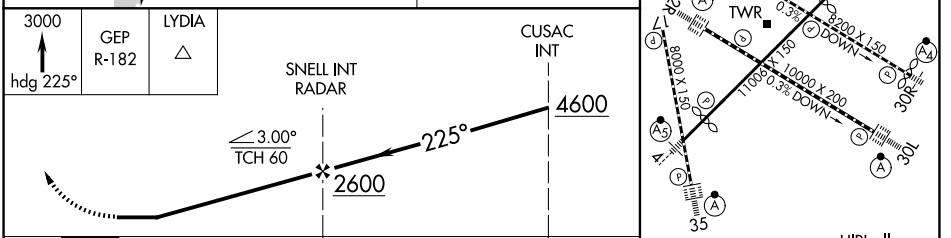
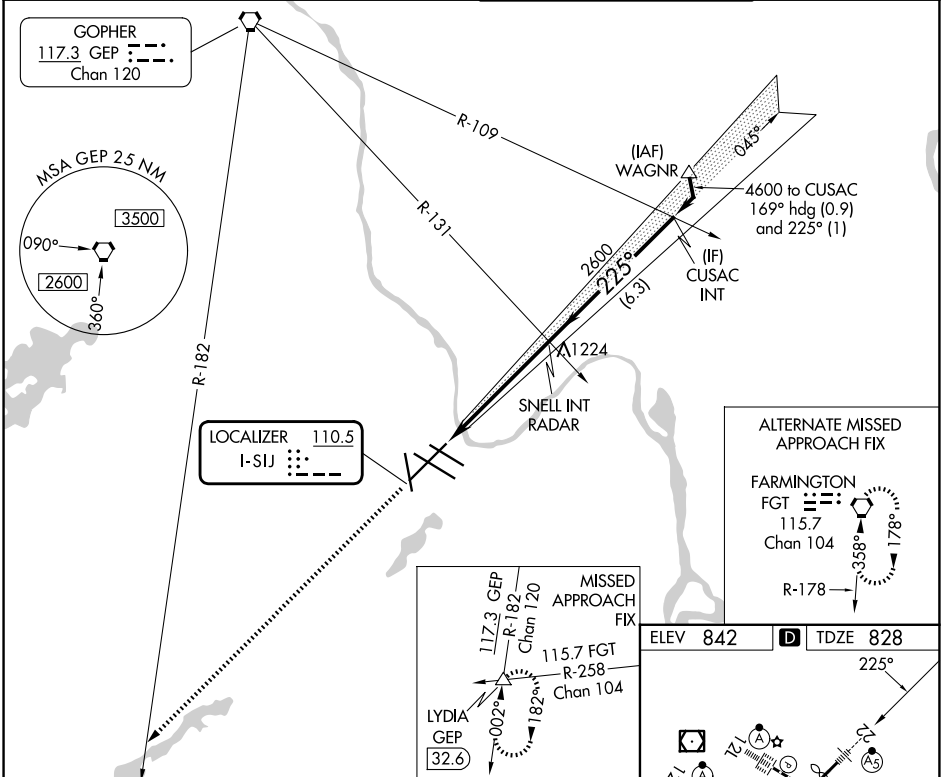


LOC I-SIJ 110.5	APP CRS 225°	Rwy Ldg 10006 TDZE 828 Apt Elev 842
---------------------------	------------------------	--

LOC RWY 22

MINNEAPOLIS-ST PAUL INTL/WOLD-CHAMBERLAIN (MSP)

	Rwy 22 helicopter visibility reduction below RVR 4000 NA. For inop ALS, increase S-22 Cat A and B visibility to RVR 5500, and Cat E visibility to 1 3/4 SM.	MALS R 	MISSED APPROACH: Climb to 3000 on heading 225° and GEP VORTAC R-182 to LYDIA INT/GEP 32.6 DME and hold.			
	<table border="1"> <tr> <td>D-ATIS 135.35 239.275</td> <td>MINNEAPOLIS APP CON 118.725 335.65 (35) 119.3 335.65 (1 2L-30R, 4-22, 17) 126.95 335.65 (1 2R-30L)</td> <td>MINNEAPOLIS TOWER 123.675 273.55 (17-35) 123.95 273.55 (1 2L-30R) 126.7 273.55 (1 2R-30L, 4-22)</td> <td>GND CON 121.8 348.6 (N) 121.9 348.6 (S) 127.925 348.6 (W)</td> </tr> </table>	D-ATIS 135.35 239.275	MINNEAPOLIS APP CON 118.725 335.65 (35) 119.3 335.65 (1 2L-30R, 4-22, 17) 126.95 335.65 (1 2R-30L)	MINNEAPOLIS TOWER 123.675 273.55 (17-35) 123.95 273.55 (1 2L-30R) 126.7 273.55 (1 2R-30L, 4-22)	GND CON 121.8 348.6 (N) 121.9 348.6 (S) 127.925 348.6 (W)	
D-ATIS 135.35 239.275	MINNEAPOLIS APP CON 118.725 335.65 (35) 119.3 335.65 (1 2L-30R, 4-22, 17) 126.95 335.65 (1 2R-30L)	MINNEAPOLIS TOWER 123.675 273.55 (17-35) 123.95 273.55 (1 2L-30R) 126.7 273.55 (1 2R-30L, 4-22)	GND CON 121.8 348.6 (N) 121.9 348.6 (S) 127.925 348.6 (W)			



CATEGORY	A	B	C	D	E	Knots	60	90	120	150	180
	S-22	1420/40	592 (600-3/4)	1420-1 1/4	592 (600-1 1/4)		Min:Sec	5:24	3:36	2:42	2:10
CIRCLING	1420-1	578 (600-1)	1460-1 3/4 618 (700-1 3/4)	1620-2 1/2 778 (800-2 1/2)	1800-3 958 (1000-3)	FAF to MAP 5.4 NM TDZL/RCLS Rwy 12L, 12R, 30L, and 35 REIL Rwy 17 HIRL all rws					

LOC RWY 22

NC-1, 14 MAY 2026 to 11 JUN 2026

NC-1, 14 MAY 2026 to 11 JUN 2026