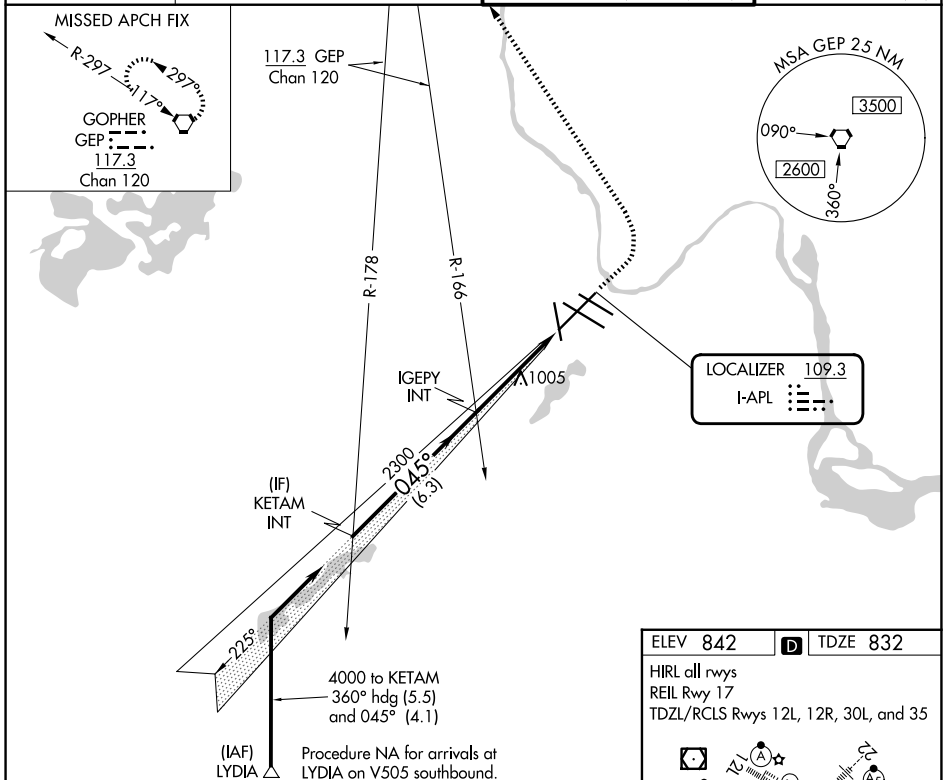


LOC I-APL 109.3	APP CRS 045°	Rwy Ldg TDZE Apt Elev	9456 832 842
---------------------------	------------------------	-----------------------------	---

LOC RWY 4

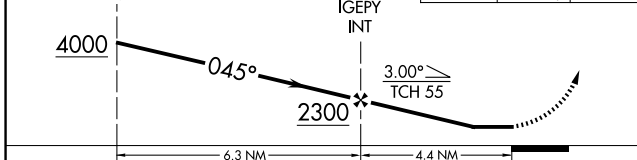
MINNEAPOLIS-ST PAUL INTL/WOLD-CHAMBERLAIN (MSP)

<p>For inop ALS, increase S-4 Cat C/D/E visibility to 1 1/8 SM.</p>	<p>MALS R</p>	<p>MISSED APPROACH: Climb to 1500 then climbing left turn to 3000 direct GEP VORTAC and hold.</p>	
		<p>D-ATIS 135.35 239.275</p>	<p>MINNEAPOLIS APP CON 118.725 335.65 (35) 119.3 335.65 (12L-30R, 4-22, 17) 126.95 335.65 (12R-30L)</p>



VGSI and descent angles not coincident (VGSI Angle 3.00/TCH 76).

1500	3000	GEP
------	------	-----



ELEV 842	D	TDZE 832
----------	---	----------

HIRL all rwys
REIL Rwy 17
TDZL/RCLS Rwys 12L, 12R, 30L, and 35

FAF to MAP 4.4 NM

Knots	60	90	120	150	180
Min:Sec	4:24	2:56	2:12	1:46	1:28

CATEGORY	A	B	C	D	E
S-4	1340/24	508 (500-1/2)	1340/55	508 (500-1)	
CIRCLING	1360-1	518 (600-1)	1460-1 1/4 618 (700-1 1/4)	1660-2 3/4 818 (900-2 3/4)	1800-3 958 (1000-3)

LOC RWY 4

NC-1, 14 MAY 2026 to 11 JUN 2026

NC-1, 14 MAY 2026 to 11 JUN 2026