

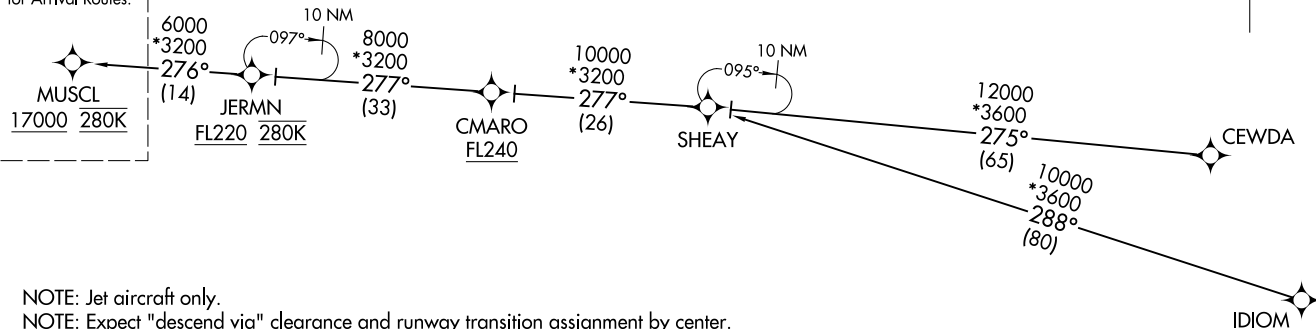
RNAV 1 - DME/DME/IRU or GPS.
RADAR required.

(MUSCL.MUSCL4) 26078
MINNEAPOLIS-ST PAUL INTL/WOLD-CHAMBERLAIN (MSP)
MUSCL FOUR ARRIVAL (RNAV) Transition Routes
AL-264 (FAA) MINNEAPOLIS, MINNESOTA

MUSCL FOUR ARRIVAL (RNAV) Transition Routes
(MUSCL.MUSCL4) 19MAR26
MINNEAPOLIS-ST PAUL INTL/WOLD-CHAMBERLAIN (MSP)
MINNEAPOLIS, MINNESOTA

MINNEAPOLIS APP CON
126.35 335.5
D-ATIS
135.35 239.275

See following page
for Arrival Routes.



NOTE: Jet aircraft only.
NOTE: Expect "descend via" clearance and runway transition assignment by center.
Approach will assign landing runway.
NOTE: Jet aircraft descend via Mach number until 280K, if unable, advise ATC.

- [CEWDA TRANSITION \(CEWDA.MUSCL4\)](#)
- [CMARO TRANSITION \(CMARO.MUSCL4\)](#)
- [IDIOM TRANSITION \(IDIOM.MUSCL4\)](#)
- [JERMN TRANSITION \(JERMN.MUSCL4\)](#)
- [SHEAY TRANSITION \(SHEAY.MUSCL4\)](#)

(CONTINUED ON FOLLOWING PAGE)

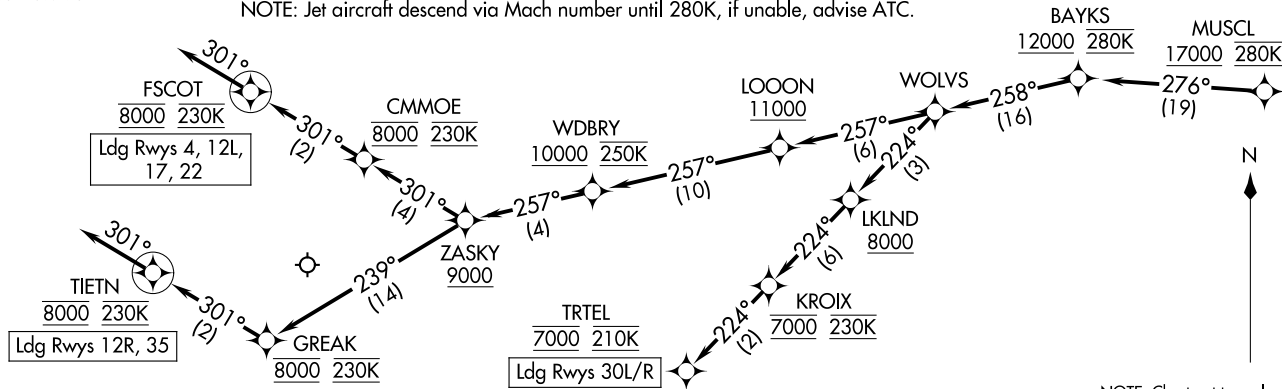
NOTE: Chart not to scale.

MUSCL FOUR ARRIVAL (RNAV) Arrival Routes
 MUSCLMUSCL4) 19MAR26
 MINNEAPOLIS-ST PAUL INTL/WOLD-CHAMBERLAIN (MSP)
 MINNEAPOLIS, MINNESOTA

MINNEAPOLIS APP CON
 126.35 335.5
 D-ATIS
 135.35 239.275

NOTE: Jet aircraft only.
 NOTE: Expect "descend via" clearance and runway transition assignment by center. Approach will assign landing runway.
 NOTE: Jet aircraft descend via Mach number until 280K, if unable, advise ATC.

RNAV 1 - DME/DME/IRU or GPS.
 RADAR required.



NOTE: Chart not to scale.

ARRIVAL ROUTE DESCRIPTION

From MUSCL on track 276° to cross BAYKS at or above 12000 and at 280K, then on track 258° to WOLVS.

LANDING RUNWAYS 4, 12L, 17, 22: From WOLVS on track 257° to cross LOON at or above 11000, then on track 257° to cross WDBRY at or above 10000 and at 250K, then on track 257° to cross ZASKY at or above 9000, then on track 301° to cross GMMOE at 8000 and at 230K, then on track 301° to cross FSCOT at 8000 and at 230K, then on track 301°. Expect RADAR vectors to final approach course.

LANDING RUNWAYS 12R, 35: From WOLVS on track 257° to cross LOON at or above 11000, then on track 257° to cross WDBRY at or above 10000 and at 250K, then on track 257° to cross ZASKY at or above 9000, then on track 239° to cross GREAK at 8000 and at 230K, then on track 301° to cross TIETN at 8000 and at 230K, then on track 301°. Expect RADAR vectors to final approach course.

LANDING RUNWAYS 30L/R: From WOLVS on track 224° to cross LKLAND at or above 8000, then on track 224° to cross KROIX at 7000 and at 230K, then on track 224° to cross TRTEL at 7000 and at 210K. Expect RNAV (RNP), RNAV (GPS), or ILS RWY 30R approach or RADAR vectors to Rwy 30L/R final approach course.

(MUSCLMUSCL4) 26078
 MINNEAPOLIS-ST PAUL INTL/WOLD-CHAMBERLAIN (MSP)
 Arrival Routes
 AL-264 (FAA) MINNEAPOLIS, MINNESOTA