

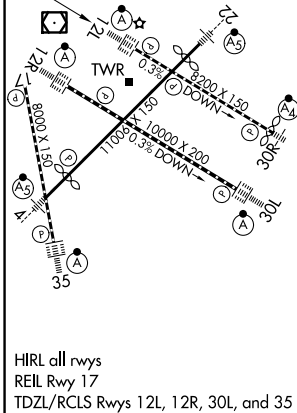
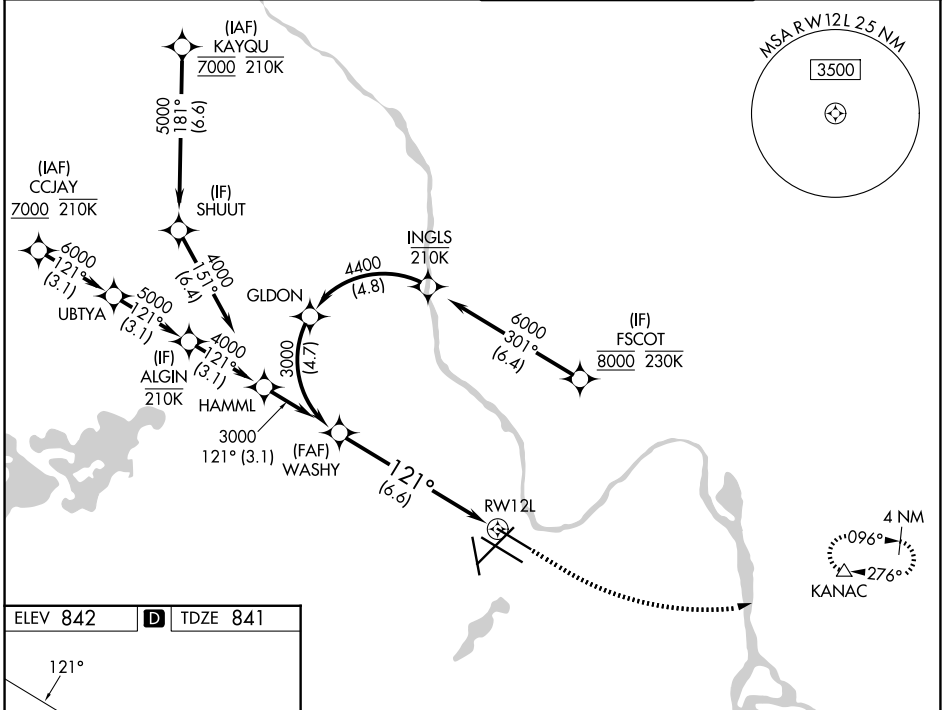
APP CRS	Rwy Ldg	7620
121°	TDZE	841
	Apt Elev	842

RNAV (RNP) Y RWY 12L

MINNEAPOLIS-ST PAUL INTL/WOLD-CHAMBERLAIN (MSP)

RNP AR APCH - GPS. Authorization required. From INGLS: RF.		ALSF-2	MISSED APPROACH: Climb to 1300 then climbing left turn to 3000 direct KANAC and hold.
▼ For uncompensated Baro-VNAV systems, procedure NA below -20°C or above 54°C. Simultaneous approach authorized. For inop ALS, increase RNP 0.15 visibility all Cats to RVR 4500, and RNP 0.30 visibility all Cats to RVR 6000.			

D-ATIS	MINNEAPOLIS APP CON	MINNEAPOLIS TOWER	GND CON
135.35 239.275	118.725 335.65 (35) 119.3 335.65 (4-22, 12L-30R, 17) 126.95 335.65 (12R-30L)	123.675 273.55 (17-35) 123.95 273.55 (12L-30R) 126.7 273.55 (4-22, 12R-30L)	121.8 348.6 (N) 121.9 348.6 (S) 127.925 348.6 (W)



CATEGORY	A	B	C	D
RNP 0.15 DA		1152/24	311 (400-½)	
RNP 0.30 DA		1243/40	402 (500-¾)	

AUTHORIZATION REQUIRED

NC-1, 14 MAY 2026 to 11 JUN 2026

NC-1, 14 MAY 2026 to 11 JUN 2026