


APP CRS	Rwy Ldg	10000
121°	TDZE	842
	Apt Elev	842

RNAV (RNP) Y RWY 12R

MINNEAPOLIS-ST PAUL INTL/WOLD-CHAMBERLAIN (MSP)

RNP AR APCH - GPS. Authorization required. From EEDDN or KRLSN: RF.
 ▼ For uncompensated Baro-VNAV systems, procedure NA below -20°C or above 54°C. Simultaneous approach authorized. For inop ALS, increase RNP 0.15 all Cats visibility to RVR 5500, and RNP 0.30 all Cats visibility to RVR 6000.

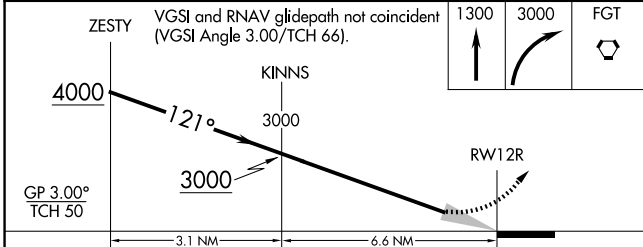
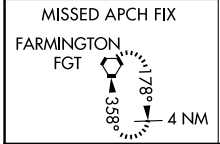
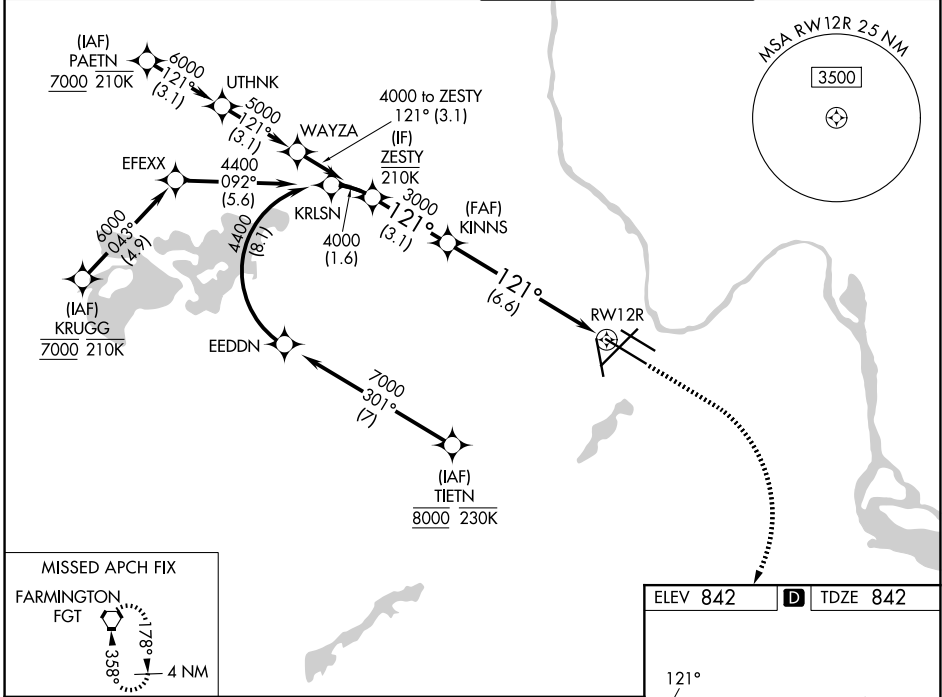
ALSF-2

 MISSED APPROACH: Climb to 1300 then climbing right turn to 3000 direct FGT VORTAC and hold.

D-ATIS
135.35 239.275

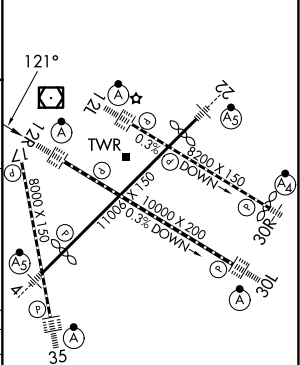
MINNEAPOLIS APP CON
118.725 335.65 (35)
119.3 335.65 (4-22, 12L-30R, 17)
126.95 335.65 (12R-30L)

MINNEAPOLIS TOWER
123.675 273.55 (17-35)
123.95 273.55 (12L-30R)
126.7 273.55 (4-22, 12R-30L)

GND CON
121.8 348.6 (N)
121.9 348.6 (S)
127.925 348.6 (W)



ELEV 842 **D** TDZE 842



CATEGORY	A	B	C	D
RNP 0.15 DA		1191/30	349 (400- $\frac{5}{8}$)	
RNP 0.30 DA		1251/40	409 (500- $\frac{3}{4}$)	

AUTHORIZATION REQUIRED

HIRL all rwys
 REIL Rwy 17
 TDZL/RCLS Rwys 12L, 12R, 30L, and 35

NC-1, 14 MAY 2026 to 11 JUN 2026

NC-1, 14 MAY 2026 to 11 JUN 2026