

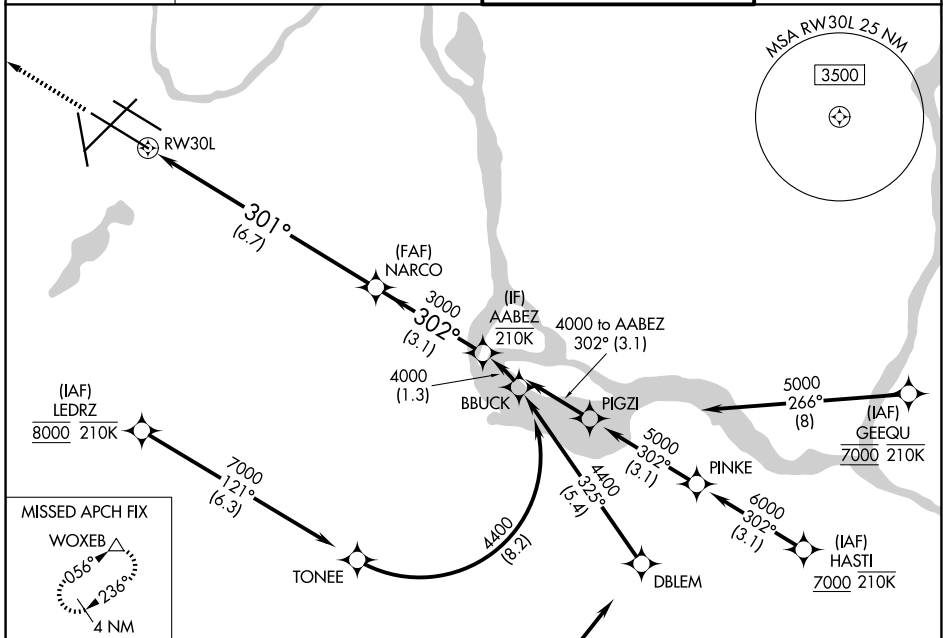
APP CRS	Rwy Ldg	<b>10000</b>
<b>301°</b>	TDZE	<b>823</b>
	Apt Elev	<b>842</b>

# RNAV (RNP) Y RWY 30L

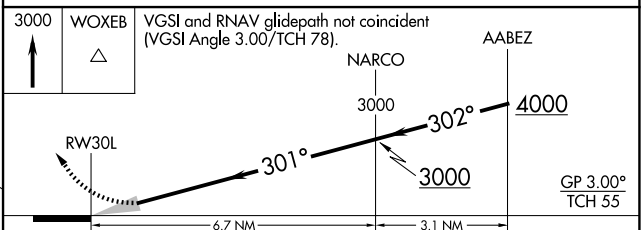
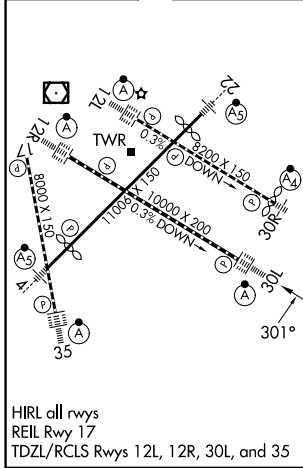
MINNEAPOLIS-ST PAUL INTL/WOLD-CHAMBERLAIN (MSP)

RNP AR APCH - GPS. Authorization required. From TONEE or BBUCK: RF.		ALSIF-2	MISSED APPROACH: Climb to 3000 direct WOXEB and hold.
For uncompensated Baro-VNAV systems, procedure NA below -21°C or above 54°C. Simultaneous approach authorized.			

D-ATIS	MINNEAPOLIS APP CON	MINNEAPOLIS TOWER	GND CON
<b>135.35 239.275</b>	<b>118.725 335.65</b> (35) <b>119.3 335.65</b> (4-22, 12L-30R, 17) <b>126.95 335.65</b> (12R-30L)	<b>123.675 273.55</b> (17-35) <b>123.95 273.55</b> (12L-30R) <b>126.7 273.55</b> (4-22, 12R-30L)	<b>121.8 348.6</b> (N) <b>121.9 348.6</b> (S) <b>127.925 348.6</b> (W)



ELEV 842	<b>D</b>	TDZE 823
----------	----------	----------



CATEGORY	A	B	C	D
RNP 0.30 DA	1 150/26 327 (400-½)			

## AUTHORIZATION REQUIRED

NC-1, 14 MAY 2026 to 11 JUN 2026

NC-1, 14 MAY 2026 to 11 JUN 2026