

APP CRS	Rwy Ldg	8000
350°	TDZE	834
	Apt Elev	842

RNAV (RNP) Y RWY 35

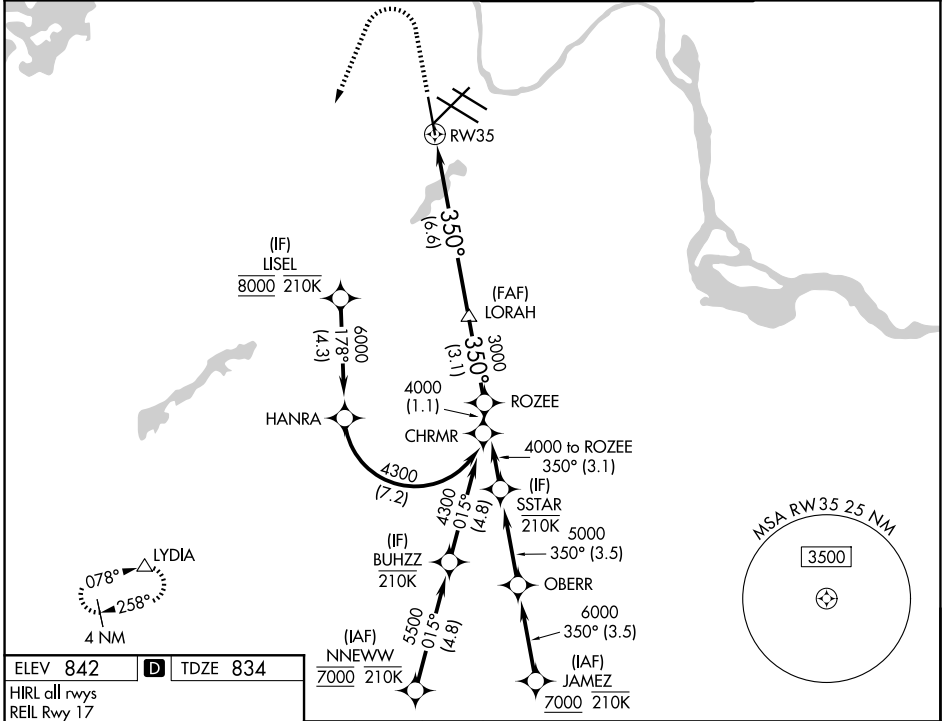
MINNEAPOLIS-ST PAUL INTL/WOLD-CHAMBERLAIN (MSP)

RNP AR APCH - GPS. Authorization required. From HANRA or CHRMR: RF.
 ▼ For uncompensated Baro-VNAV systems, procedure NA below -19°C or above 54°C. For inop ALS, increase RNP 0.11 visibility all Cats to RVR 5500 and RNP 0.30 visibility all Cats to 1 1/2 SM.

ALSF-2

MISSED APPROACH: Climb to 1300 then climbing left turn to 3000 direct LYDIA and hold.

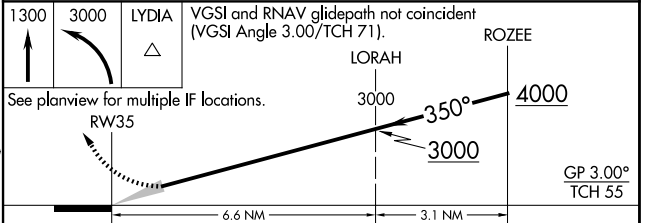
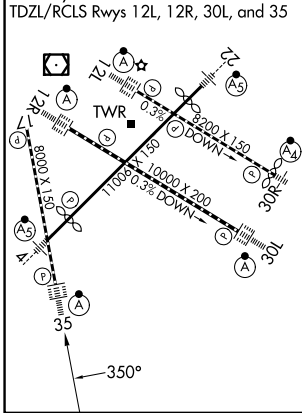
D-ATIS	MINNEAPOLIS APP CON	MINNEAPOLIS TOWER	GND CON
135.35 239.275	118.725 335.65 (35)	123.675 273.55 (17-35)	121.8 348.6 (N)
	119.3 335.65 (4-22, 12L-30R, 17)	123.95 273.55 (12L-30R)	121.9 348.6 (S)
	126.95 335.65 (12R-30L)	126.7 273.55 (4-22, 12R-30L)	127.925 348.6 (W)



NC-1, 14 MAY 2026 to 11 JUN 2026

NC-1, 14 MAY 2026 to 11 JUN 2026

ELEV 842	D	TDZE 834
HIRL all rwys		
REIL Rwy 17		
TDZL/RCLS Rwys 12L, 12R, 30L, and 35		



CATEGORY	A	B	C	D
RNP 0.11 DA		1213/35	379 (400-5%)	
RNP 0.16 DA		1291/45	457 (500-7%)	
RNP 0.30 DA		1345/55	511 (600-1)	

AUTHORIZATION REQUIRED

RNAV (RNP) Y RWY 35