

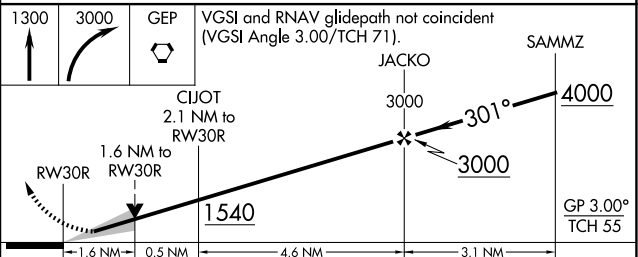
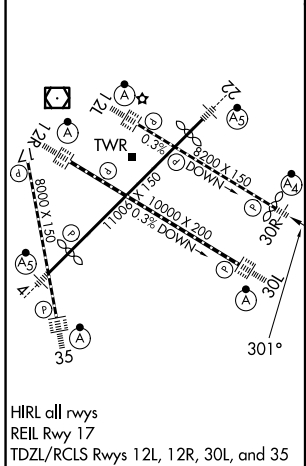
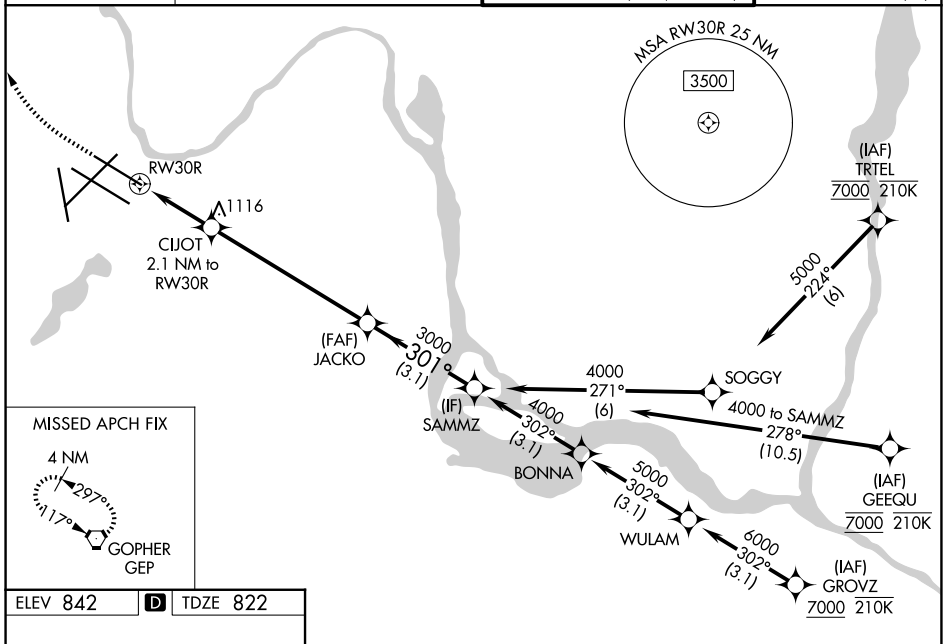
WAAS CH 60925 W30B	APP CRS 301°	Rwy Ldg TDZE 822 Apt Elev 842
--	------------------------	---

RNAV (GPS) Z RWY 30R

MINNEAPOLIS-ST PAUL INTL/WOLD-CHAMBERLAIN (MSP)

RNP APCH - GPS.	<p>⚠ For uncompensated Baro-VNAV systems, LNAV/VNAV NA below -20°C or above 54°C. LNAV procedure NA during simultaneous operations. Inop table does not apply to LPV or AP req'd during simultaneous operations. Simultaneous approach authorized.</p>	<p>MALSF</p>	<p>MISSED APPROACH: Climb to 1300, then climbing right turn to 3000 direct GEP VORTAC and hold.</p>
-----------------	--	--------------	---

D-ATIS 135.35 239.275	MINNEAPOLIS APP CON 118.725 335.65 (35) 119.3 335.65 (4-22, 12L-30R, 17) 126.95 335.65 (12R-30L)	MINNEAPOLIS TOWER 123.675 273.55 (17-35) 123.95 273.55 (12L-30R) 126.7 273.55 (4-22, 12R-30L)	GND CON 121.8 348.6 (N) 121.9 348.6 (S) 127.925 348.6 (W)
---------------------------------	--	---	---



CATEGORY	A	B	C	D
LPV DA		1072/40	250 (300-¾)	
LNAV/VNAV DA		1316/60	494 (500-1¼)	
LNAV MDA	1400/40	578 (600-¾)	1400-1⅓, 578 (600-1⅓)	
CIRCLING	1400-1	558 (600-1)	1460-1¾, 618 (700-1¾)	1620-2½, 778 (800-2½)

NC-1, 14 MAY 2026 to 11 JUN 2026

NC-1, 14 MAY 2026 to 11 JUN 2026