

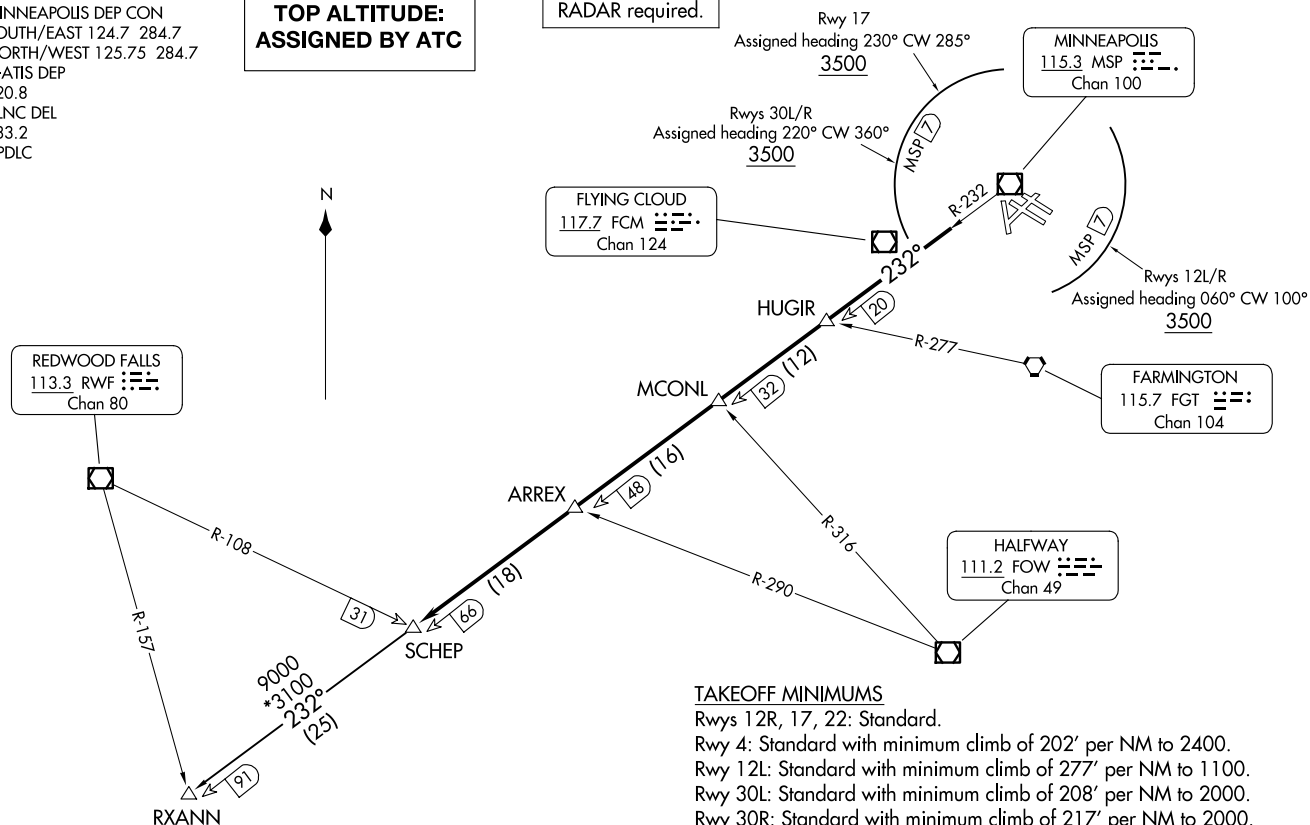
SCHEP ONE DEPARTURE  
(SCHEP1 .SCHEP) 08SEP22

MINNEAPOLIS-ST PAUL INTL/WOLD-CHAMBERLAIN (MSP)  
MINNEAPOLIS, MINNESOTA

MINNEAPOLIS DEP CON  
SOUTH/EAST 124.7 284.7  
NORTH/WEST 125.75 284.7  
D-ATIS DEP  
120.8  
CLNC DEL  
133.2  
CPDLC

**TOP ALTITUDE:  
ASSIGNED BY ATC**

RADAR required.



(SCHEP1 .SCHEP) 23334  
SCHEP ONE DEPARTURE

MINNEAPOLIS-ST PAUL INTL/WOLD-CHAMBERLAIN (MSP)  
MINNEAPOLIS, MINNESOTA  
AL-264 (FAA)

(CONTINUED ON FOLLOWING PAGE)

NOTE: Chart not to scale.

# SCHEP ONE DEPARTURE



## DEPARTURE ROUTE DESCRIPTION

TAKEOFF ALL RUNWAYS: Climb on assigned heading for RADAR vectors to assigned fix on MSP R-232, then on depicted route to SCHEP, then on transition. Maintain ATC assigned altitude. Expect filed altitude 10 minutes after departure.

ALL AIRCRAFT: ATC CROSSING RESTRICTIONS AND CLIMB GRADIENTS: If unable to accept crossing restrictions and climb rates, advise ATC prior to taxi.

RUNWAYS 12L/12R: For assigned headings from 060° clockwise to 100°, cross MSP 7 DME Arc at or above 3500, RWY 12L: 540 feet per NM to 3500, RWY 12R: 542 feet per NM to 3500.

RUNWAY 17: For assigned headings from 230° clockwise to 285°, cross MSP 7 DME Arc at or above 3500, 512 feet per NM to 3500.

RUNWAYS 30L/R: For assigned headings from 220° clockwise to 360°, cross MSP 7 DME Arc at or above 3500, 380 feet per NM to 3500.

RXANN TRANSITION (SCHEP1.RXANN): From over SCHEP INT on MSP R-232 to RXANN INT.

NC-1, 14 MAY 2026 to 11 JUN 2026

NC-1, 14 MAY 2026 to 11 JUN 2026