

(DIDLY5.DIDLY) 23278

# DIDLY FIVE DEPARTURE

AL-266 (FAA)

MISSOULA MONTANA (MSO)

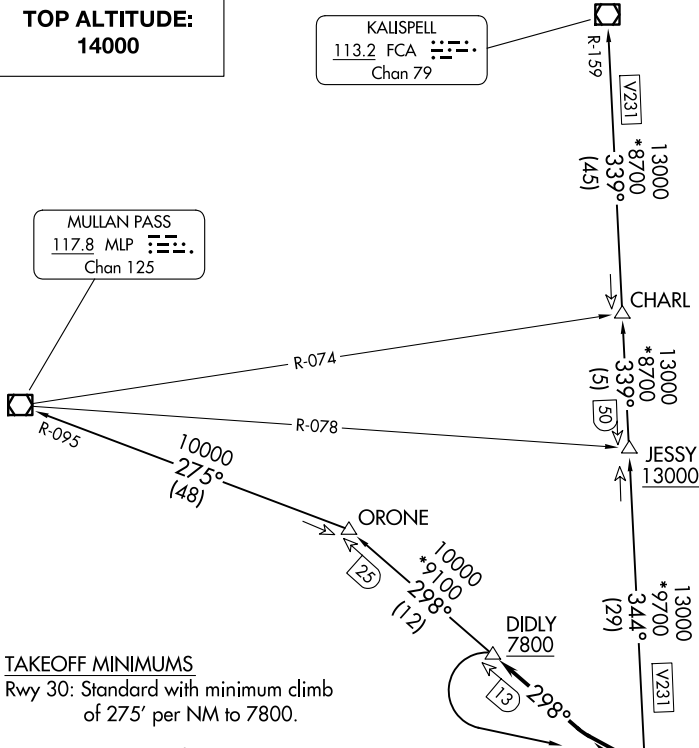
MISSOULA, MONTANA

**TOP ALTITUDE:  
14000**

KALISPELL  
113.2 FCA  
Chan 79

SPOKANE DEP CON \*  
124.9 298.95  
SALT LAKE CITY CENTER  
127.075 244.875  
ATIS  
126.65  
GND CON  
121.9  
MISSOULA TOWER \*  
118.4 377.175

MULLAN PASS  
117.8 MLP  
Chan 125



### TAKEOFF MINIMUMS

Rwy 30: Standard with minimum climb of 275' per NM to 7800.

NOTE: DME required.

NOTE: Chart not to scale.

### DEPARTURE ROUTE DESCRIPTION

**TAKEOFF RUNWAY 30:** Climb on MSO R-298 to cross DIDLY at or above 7800, thence on assigned transition or route.

**KALISPELL TRANSITION (DIDLY5.FCA):** From over DIDLY, left turn on MSO R-298 to MSO VOR/DME, then on MSO R-344 to JESSY, then on MSO R-344 and FCA R-159 to FCA VOR/DME.

**MISSOULA TRANSITION (DIDLY5.MSO):** From over DIDLY, left turn on MSO R-298 to MSO VOR/DME.

**MULLAN PASS TRANSITION (DIDLY5.MLP):** From over DIDLY on MSO R-298 to ORONE, then on MLP R-095 to MLP VOR/DME.

**SALMON TRANSITION (DIDLY5.LKT):** From over DIDLY left turn on MSO R-298 to MSO VOR/DME, then on MSO R-167 and LKT R-347 to LKT VOR/DME.

# DIDLY FIVE DEPARTURE

(DIDLY5.DIDLY) 24MAY18

MISSOULA, MONTANA  
MISSOULA MONTANA (MSO)

NW-1, 14 MAY 2026 to 11 JUN 2026

NW-1, 14 MAY 2026 to 11 JUN 2026