

APP CRS	Rwy Ldg TDZE	N/A
<b>339°</b>	Apt Elev	<b>3206</b>

# RNAV (GPS)-D

MISSOULA MONTANA (MISO)

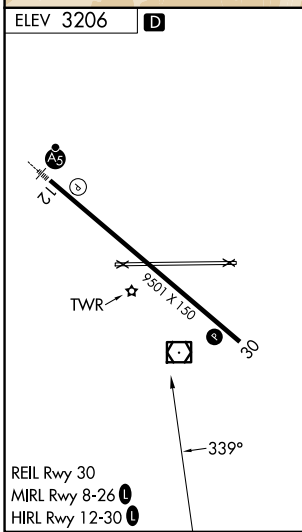
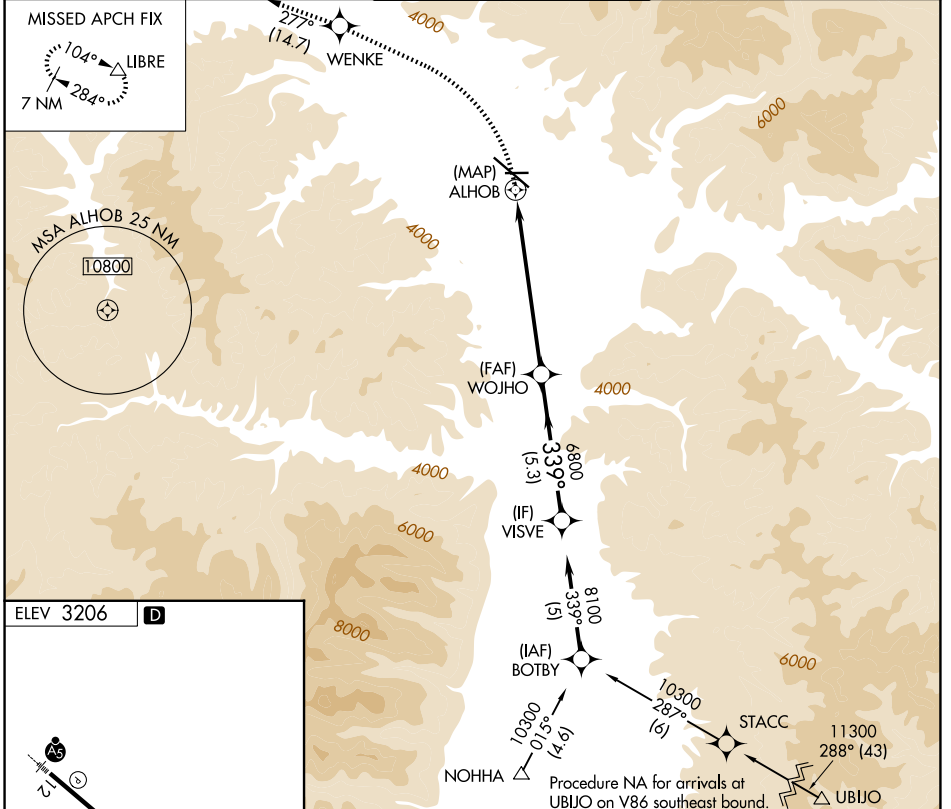
RNP APCH.

**▲** Circling NA for Cats C and D northeast of Rwy 12-30.

**❄** -11°C

MISSED APPROACH: Climbing left turn to 9600 direct WENKE and on track 277° to LIBRE and hold, continue climb-in-hold to 9600.

ATIS	SPOKANE APP CON *	MISSOULA TOWER *	GND CON	UNICOM
<b>126.65</b>	<b>124.9 298.95</b>	<b>118.4 (CTAF) 377.175</b>	<b>121.9</b>	<b>122.95</b>



9600	WENKE	tr 277°	LIBRE	VISVE
ALHOB		WOJHO	8100	
6.7 NM		5.3 NM		
CATEGORY	A	B	C	D
CIRCLING	4280-1¼ 1074 (1100-1¼)	4700-1½ 1494 (1500-1½)	4700-3 1494 (1500-3)	5140-3 1934 (2000-3)

NW-1, 14 MAY 2026 to 11 JUN 2026

NW-1, 14 MAY 2026 to 11 JUN 2026