

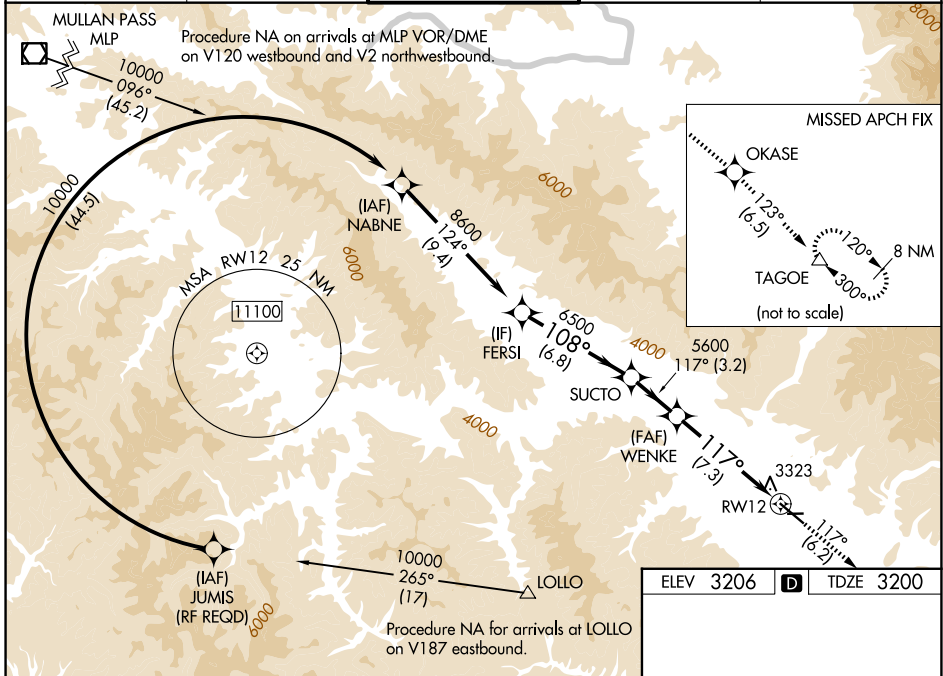
APP CRS	Rwy Ldg	9501
117°	TDZE	3200
	Apt Elev	3206

RNAV (RNP) Z RWY 12

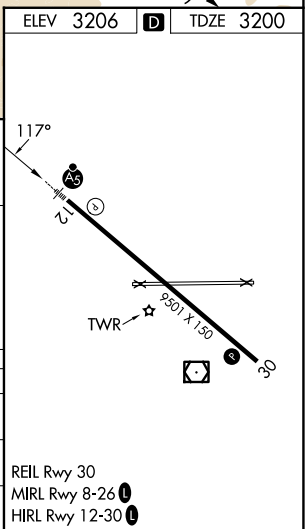
MISSOULA MONTANA (MISO)

RNP AR APCH.		MALSR 	MISSED APPROACH: Climb to 13000 on track 117° to OKASE and on track 123° to TAGOE and hold, continue climb-in-hold to 13000. *Misted approach requires minimum climb of 350 feet per NM to 8300; if unable to meet climb gradient, see RNAV (GPS) Y RWY 12. #Misted approach requires minimum climb of 425 feet per NM to 8300.
	For uncompensated Baro-VNAV systems, LNAV/VNAV NA below -21° C (-6°F) or above 43°C (109°F). For inop ALS, increase RNP 0.12 all Cats visibility to RVR 6000. For inop ALS, increase RNP 0.30 all Cats visibility to 2½ SM. When local weather not received, procedure NA.		

ATIS 126.65	SPOKANE APP CON* 124.9 298.95	MISSOULA TOWER* 118.4(CTAF) 377.175	GND CON 121.9	UNICOM 122.95
-----------------------	---	---	-------------------------	-------------------------



VGSI and RNAV glidepath not coincident (VGSI Angle 3.00/TCH 55).		13000	OKASE	TAGOE
FERSI	SUCTO	tr 117°	tr 123°	△
8600	6500	5600	RWY 12	
GP 3.00°				
TCH 45				
	6.8 NM	3.2 NM	7.3 NM	
CATEGORY	A	B	C	D
RNP 0.12 DA#	3518/40		318 (400-¾)	
RNP 0.30 DA*	3880-2		680 (700-2)	



AUTHORIZATION REQUIRED

REIL Rwy 30
MIRL Rwy 8-26
HIRL Rwy 12-30

NW-1, 14 MAY 2026 to 11 JUN 2026

NW-1, 14 MAY 2026 to 11 JUN 2026