

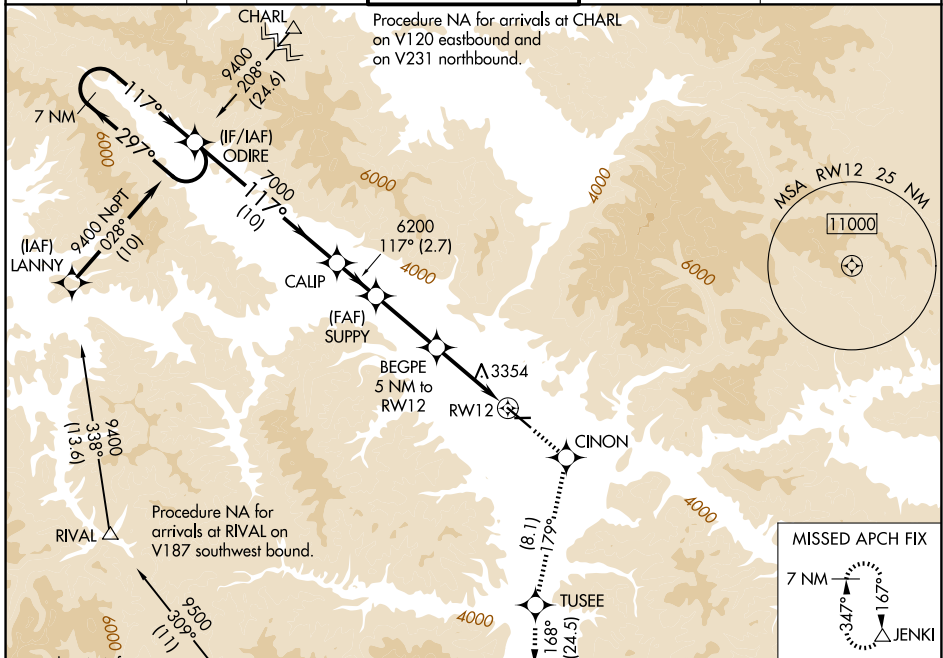
WAAS CH 65715 W12B	APP CRS 117°	Rwy Ldg TDZE Apt Elev	9501 3200 3206
--	------------------------	-----------------------------	---

RNAV (GPS) Y RWY 12

MISSOULA MONTANA (MISO)

RNP APCH.	MALS R	MISSED APPROACH: (Do not exceed 200K until CINON) Climb to 12000 direct CINON and on track 179° to TUSEE and on track 168° to JENKI and hold, continue climb-in-hold to 12000. ## Missed approach requires minimum climb of 325 feet per NM to 7700.
<p>⚠ Circling NA for Cats C and D northeast of Rwy 12-30. Inop table does not apply to LNAV # Cats C/D. Inop table does not apply to LPV † all Cats. **RVR 1800 authorized with use of FD or AP or HUD to DA.</p>		

ATIS 126.65	SPOKANE APP CON * 124.9 298.95	MISSOULA TOWER * 118.4 (CTAF) 0 377.175	GND CON 121.9	UNICOM 122.95
-----------------------	--	---	-------------------------	-------------------------



ELEV 3206	D	TDZE 3200
REIL Rwy 30	MIRL Rwy 8-26	HIRL Rwy 12-30

	7 NM Holding Pattern	ODIRE	CALIP	SUPPLY	BEGPE	TUSEE	JENKI
	9400	7000	6200	6200	5 NM to RWY 12	12000	12000
	117°	117°	179°	179°	168°	168°	167°
	GP 3.00°						
	TCH 55						
		10 NM	2.7 NM	4.3 NM	3.8 NM	1.2 NM	
CATEGORY	A	B	C	D			
LPV DA ##	3400/24		200 (200-1/2)				
LPV DA †	4229-4		1029 (1100-4)				
LNAV MDA ##	3640/24		440 (500-1/2)		3640/40		440 (500-3/4)
LNAV MDA #	4520/40 1320 (1400-3/4)		4520/55 1320 (1400-1)		4520-3		1320 (1400-3)
CIRCLING	4520-1 1/4 1314 (1400-1 1/4)		4700-1 1/2 1494 (1500-1 1/2)		4700-3		5140-3 1934 (2000-3)

NW-1, 14 MAY 2026 to 11 JUN 2026

NW-1, 14 MAY 2026 to 11 JUN 2026