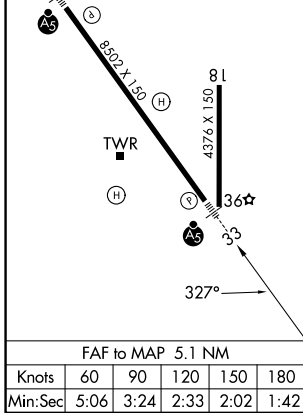
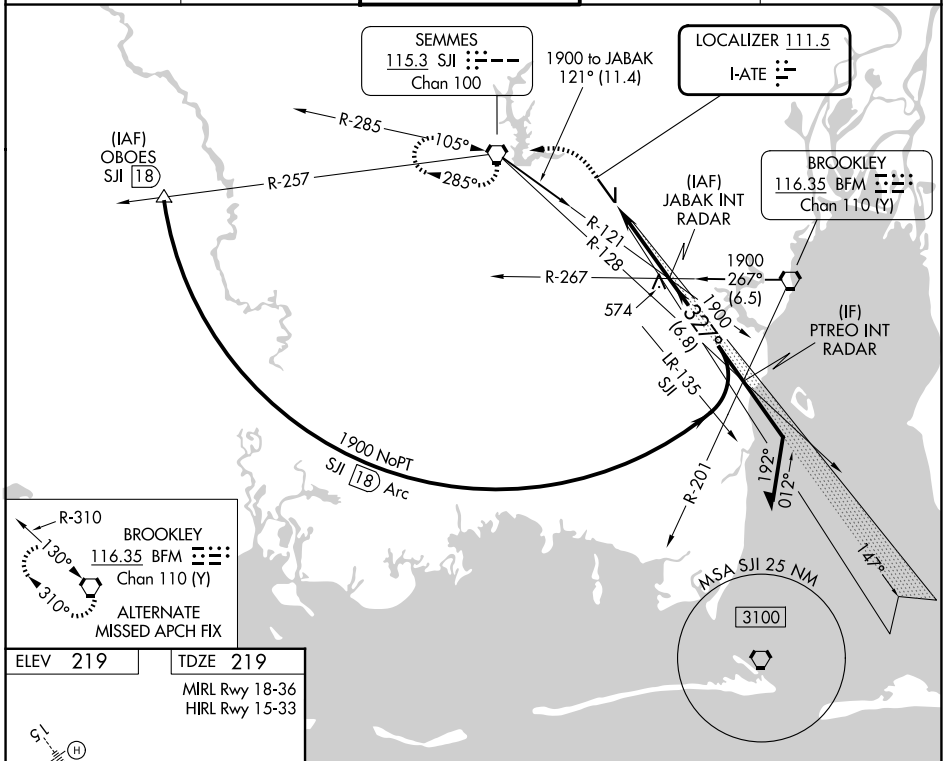


LOC I-ATE <b>111.5</b>	APP CRS <b>327°</b>	Rwy Ldg <b>8502</b> TDZE <b>219</b> Apt Elev <b>219</b>
---------------------------	------------------------	---

# ILS or LOC RWY 33

MOBILE RGNL (MOB)

* RVR 1800 authorized with use of FD or AP or HUD to DA.			MISSED APPROACH: Climb to 700 then climbing left turn to 2000 direct SJI VORTAC and hold.	
ATIS <b>124.75 257.85</b>	MOBILE APP CON * <b>118.5 269.3</b>	MOBILE TOWER * <b>118.3 (CTAF) 239.0</b>	GND CON <b>121.9 348.6</b>	UNICOM <b>122.95</b>



700	2000	SJI	Remain within 10 NM	
VGSi and ILS glidepath not coincident (VGSi Angle 3.00/TCH 50).			1900	1900
			1.47°	327°
			1900	GS 3.00° TCH 57
			5.1 NM	
CATEGORY	A	B	C	D
S-ILS 33*	419/24 200 (200-½)			
S-LOC 33	660/24	441 (500-½)	660/45	441 (500-¾)
CIRCLING	680-1	461 (500-1)	740-1½ 521 (600-1½)	780-2 561 (600-2)

SE-4, 14 MAY 2026 to 11 JUN 2026

SE-4, 14 MAY 2026 to 11 JUN 2026