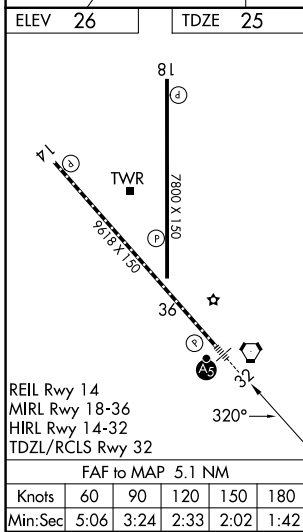
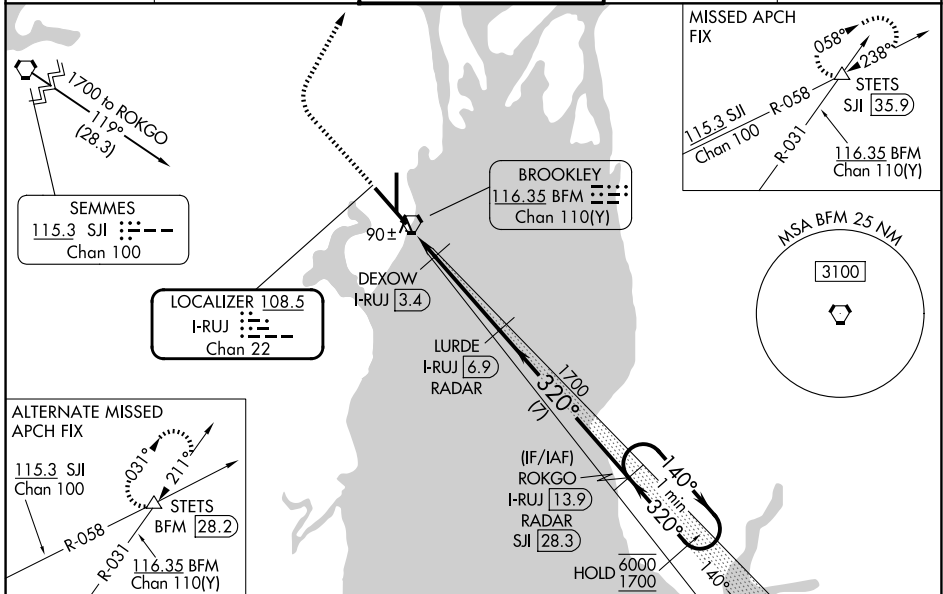


LOC/DME I-RUJ <b>108.5</b> Chan 22	APP CRS <b>320°</b>	Rwy Ldg TDZE Apt Elev	<b>9618</b> <b>25</b> <b>26</b>
--	------------------------	-----------------------------	---------------------------------------

# ILS or LOC RWY 32

MOBILE INTL (BFM)

DME or RADAR required.		MALSR	MISSED APPROACH: Climb to 800 then climbing right turn to 2000 on heading 030° and on SJI R-058 to STETS INT/SJI 35.9 DME and hold.	
<p>⚠ For inop ALS, increase S-LOC 32 Cat C/D visibility to 1¾ and DEXOW S-LOC 32 Cat C/D visibility to RVR 4500.</p>				
ATIS <b>135.575</b>	MOBILE APP CON ★ <b>118.5 269.3</b>	INTERNATIONAL TOWER ★ <b>118.8 (CTAF) 251.1</b>	GND CON <b>121.7 239.3</b>	UNICOM <b>122.95</b>



ELEV 26	TDZE 25	800	2000	SJI R-058	STETS	VGSi and ILS glidepath not coincident (VGSi Angle 3.00/TCH 71).				
						LURDE I-RUJ 6.9 (RADAR)	ROKGO I-RUJ 13.9 (RADAR)	One Minute Holding Pattern		
						DEXOW I-RUJ 3.4	1700	320°	140°	6000
						I-RUJ 1.8	I-RUJ 2.6	580	1700	1700
						0.9 NM	0.8 NM	3.5 NM	7 NM	GS 3.00° TCH 55
						CATEGORY	A	B	C	D
						S-ILS 32	225/18		200 (200-½)	
						S-LOC 32	580/24	555 (600-½)	580/60	555 (600-1¼)
						CIRCLING	680-1	654 (700-1)	680-1¾ 654 (700-1¾)	1100-3 1074 (1100-3)
						DEXOW FIX MINIMUMS				
						S-LOC 32	340/24			
						CIRCLING	680-1	654 (700-1)	680-1¾ 654 (700-1¾)	1100-3 1074 (1100-3)

SE-4, 14 MAY 2026 to 11 JUN 2026

SE-4, 14 MAY 2026 to 11 JUN 2026