

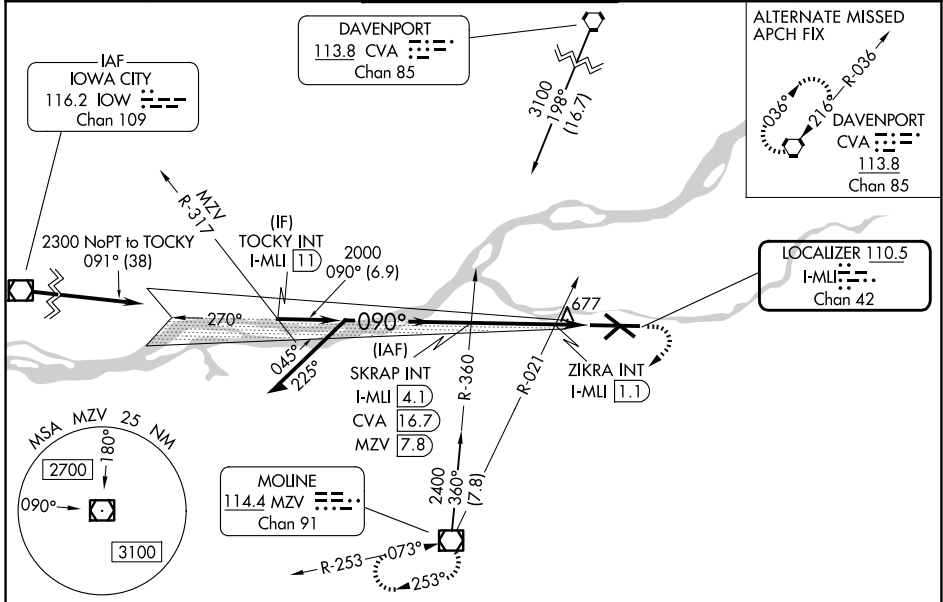
| | | |
|---|------------------------|--|
| LOC/DME I-MLI 110.5 Chan 42 | APP CRS 090° | Rwy Ldg 1000Z TDZE 587 Apt Elev 590 |
|---|------------------------|--|

ILS or LOC RWY 9

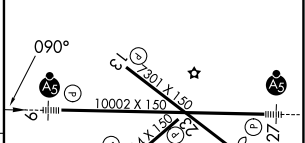
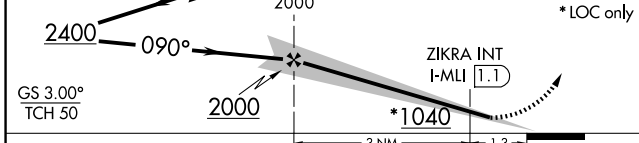
QUAD CITIES INTL (MLI)

| | | |
|--|--|---|
| DME required for procedure entry at CVA VORTAC and MZV VOR/DME. | | MALSR MISSED APPROACH: Climb to 1100 then climbing right turn to 2300 direct MZV VOR/DME and hold. |
| Circling to Rwy 5 NA at night. For inop ALS, increase S-LOC 9 Cats C and D visibility to 1 3/4 SM. ZIKRA Minimums: For inop ALS, increase S-LOC Cats C and D visibility to 1 SM. # RVR 1800 authorized with use of FD or AP or HUD to DA. | | |

| | | | | |
|----------------------|--|--|-------------------------|-------------------------|
| ATIS 121.2 | QUAD CITY APP CON * 125.95 257.8 | QUAD CITY TOWER * 119.4(CTAF) 269.55 | GND CON 121.9 | UNICOM 122.95 |
|----------------------|--|--|-------------------------|-------------------------|



| | | | | | | |
|---------------------|---------------------|------|------|-----|-----------|--|
| Remain within 10 NM | SKRAP INT I-MLI 4.1 | 1100 | 2300 | MZV | ELEV 590 | <input checked="" type="checkbox"/> TDZE 587 |
| 2400 | 270° | 2000 | | | *LOC only | |
| 2400 | 090° | | | | | |
| GS 3.00° TCH 50 | | | | | | |



| CATEGORY | A | B | C | D |
|---|-----------------------|-----------------------|-----------------------|-------------------------------|
| S-ILS 9# | 787/24 200 (200-1/2) | | | |
| S-LOC 9 | 1040/24 | 453 (500-1/2) | 1040/50 | 453 (500-1) |
| CIRCLING | 1140-1 550 (600-1) | 1200-1 610 (700-1) | 1320-2 730 (800-2) | 1420-2 3/4 830 (900-2 3/4) |
| ZIKRA MINIMUMS (Dual VOR receivers or DME required) | | | | |
| S-LOC 9 | 940/24 | 353 (400-1/2) | 940/35 | 353 (400-5/8) |
| CIRCLING | 1140-1 550 (600-1) | 1200-1 610 (700-1) | 1320-2 730 (800-2) | 1420-2 3/4 830 (900-2 3/4) |

| | |
|--------------------------|--------------------------|
| MIRL Rwy 5-23 | REIL Rwys 13 and 31 |
| HIRL Rwys 9-27 and 13-31 | |
| FAF to MAP 4.3 NM | |
| Knots | 60 90 120 150 180 |
| Min:Sec | 4:18 2:52 2:09 1:43 1:26 |

EC-3, 14 MAY 2026 to 11 JUN 2026

EC-3, 14 MAY 2026 to 11 JUN 2026