

WAAS CH <b>70510</b> <b>W22A</b>	APP CRS <b>222°</b>	Rwy Ldg TDZE <b>78</b> Apt Elev <b>79</b>
----------------------------------------	------------------------	-------------------------------------------------

# RNAV (GPS) RWY 22

MONROE RGNL (MLU)

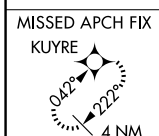
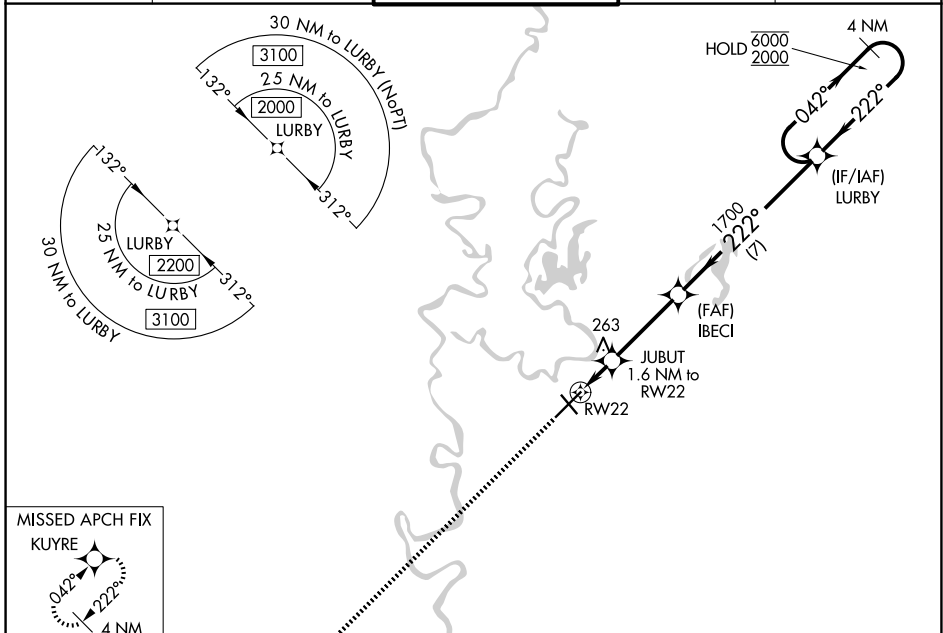
RNP APCH.

**⚠** Circling Rwy 14 NA at night. For uncompensated Baro-VNAV systems, LNAV/VNAV NA below -6°C or above 54°C. For inop ALS, increase LNAV/VNAV all Cats visibility to 1½ SM.

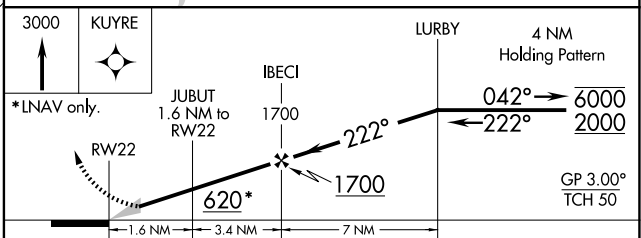
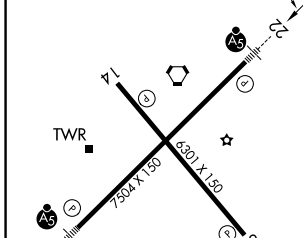


**MISSED APPROACH:** Climb to 3000 direct KUYRE and hold, continue climb-in-hold to 3000.

ATIS <b>125.05</b>	MONROE APP CON * <b>118.15 290.475</b>	MONROE TOWER * <b>118.9 (CTAF) 0 257.8</b>	GND CON <b>121.9</b>	UNICOM <b>122.95</b>
-----------------------	-------------------------------------------	-----------------------------------------------	-------------------------	-------------------------



ELEV 79	<b>D</b>	TDZE 78
---------	----------	---------



CATEGORY	A	B	C	D
LPV DA		278-½	200 (200-½)	
LNAV/VNAV DA		534-1	456 (500-1)	
LNAV MDA	520-½	442 (500-½)	520-⅞	442 (500-⅞)
CIRCLING	540-1 461 (500-1)	580-1 501 (600-1)	740-⅜ 661 (700-⅜)	1160-3 1081 (1100-3)

REIL Rwy 14 and 32  
MIRL Rwy 14-32 **Ⓛ**  
HIRL Rwy 4-22 **Ⓛ**

SC-4, 14 MAY 2026 to 11 JUN 2026

SC-4, 14 MAY 2026 to 11 JUN 2026