

LOC/DME I-MTB	APP CRS	Rwy Ldg TDZE	7000 257
110.7 Chan 44	278°	Apt Elev	257

LOC RWY 28L

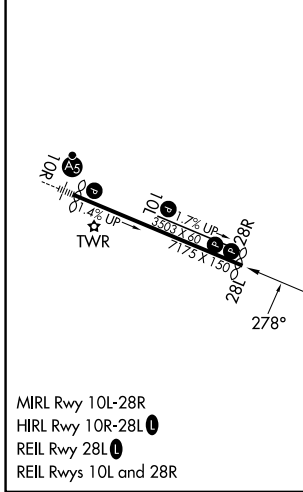
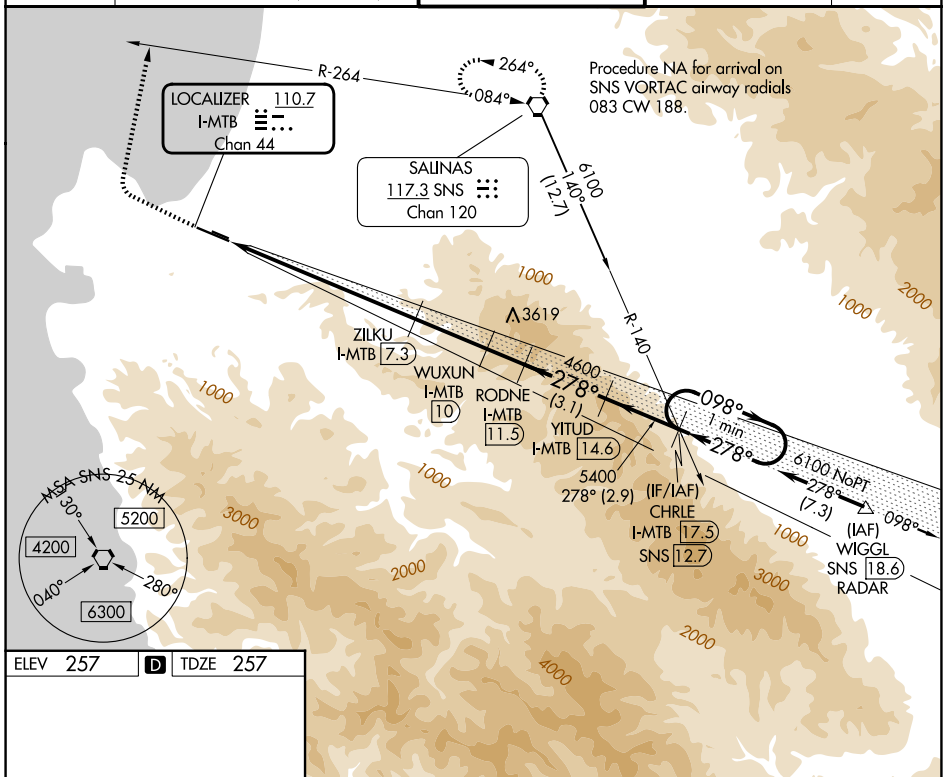
MONTEREY RGNL (MRY)

DME required. DME or RADAR required for procedure entry.

⚠ Circling NA south of Rwy 10R-28L. Rwy 28L helicopter visibility reduction below 3/4 SM NA.

MISSED APPROACH: Climb to 3000 then climbing right turn to 5000 on heading 360° and SNS VORTAC R-264 to SNS VORTAC and hold.

ATIS 119.25	NORCAL APP CON 133.0 251.15 (001°-135°) 127.15 307.125 (136°-360°)	MONTEREY TOWER ★ 118.4 (CTAF) 0 257.8	GND CON 120.875 348.6	UNICOM 122.95
-----------------------	----------------------------------------------------------------------------------------	-------------------------------------------------	---------------------------------	-------------------------



	↑ 3000	↻ hdg 360°	SNS R-264	SNS	CHRLE
					YITUD I-MTB 17.5
					One Minute Holding Pattern
					YITUD I-MTB 14.6
					WUXUN I-MTB 11.5
					RODNE I-MTB 11.5
					ZILKU I-MTB 7.3
					WUXUN I-MTB 10
					ZILKU I-MTB 4.1
					ZILKU I-MTB 0.1
					CHRLE I-MTB 17.5
					YITUD I-MTB 14.6
					WUXUN I-MTB 11.5
					RODNE I-MTB 11.5
					ZILKU I-MTB 7.3
					WUXUN I-MTB 10
					ZILKU I-MTB 4.1
					ZILKU I-MTB 0.1
					CHRLE I-MTB 17.5
					YITUD I-MTB 14.6
					WUXUN I-MTB 11.5
					RODNE I-MTB 11.5
					ZILKU I-MTB 7.3
					WUXUN I-MTB 10
					ZILKU I-MTB 4.1
					ZILKU I-MTB 0.1
					CHRLE I-MTB 17.5
					YITUD I-MTB 14.6
					WUXUN I-MTB 11.5
					RODNE I-MTB 11.5
					ZILKU I-MTB 7.3
					WUXUN I-MTB 10
					ZILKU I-MTB 4.1
					ZILKU I-MTB 0.1
					CHRLE I-MTB 17.5
					YITUD I-MTB 14.6
					WUXUN I-MTB 11.5
					RODNE I-MTB 11.5
					ZILKU I-MTB 7.3
					WUXUN I-MTB 10
					ZILKU I-MTB 4.1
					ZILKU I-MTB 0.1
					CHRLE I-MTB 17.5
					YITUD I-MTB 14.6
					WUXUN I-MTB 11.5
					RODNE I-MTB 11.5
					ZILKU I-MTB 7.3
					WUXUN I-MTB 10
					ZILKU I-MTB 4.1
					ZILKU I-MTB 0.1
					CHRLE I-MTB 17.5
					YITUD I-MTB 14.6
					WUXUN I-MTB 11.5
					RODNE I-MTB 11.5
					ZILKU I-MTB 7.3
					WUXUN I-MTB 10
					ZILKU I-MTB 4.1
					ZILKU I-MTB 0.1
					CHRLE I-MTB 17.5
					YITUD I-MTB 14.6
					WUXUN I-MTB 11.5
					RODNE I-MTB 11.5
					ZILKU I-MTB 7.3
					WUXUN I-MTB 10
					ZILKU I-MTB 4.1
					ZILKU I-MTB 0.1
					CHRLE I-MTB 17.5
					YITUD I-MTB 14.6
					WUXUN I-MTB 11.5
					RODNE I-MTB 11.5
					ZILKU I-MTB 7.3
					WUXUN I-MTB 10
					ZILKU I-MTB 4.1
					ZILKU I-MTB 0.1
					CHRLE I-MTB 17.5
					YITUD I-MTB 14.6
					WUXUN I-MTB 11.5
					RODNE I-MTB 11.5
					ZILKU I-MTB 7.3
					WUXUN I-MTB 10
					ZILKU I-MTB 4.1
					ZILKU I-MTB 0.1
					CHRLE I-MTB 17.5
					YITUD I-MTB 14.6
					WUXUN I-MTB 11.5
					RODNE I-MTB 11.5
					ZILKU I-MTB 7.3
					WUXUN I-MTB 10
					ZILKU I-MTB 4.1
					ZILKU I-MTB 0.1
					CHRLE I-MTB 17.5
					YITUD I-MTB 14.6
					WUXUN I-MTB 11.5
					RODNE I-MTB 11.5
					ZILKU I-MTB 7.3
					WUXUN I-MTB 10
					ZILKU I-MTB 4.1
					ZILKU I-MTB 0.1
					CHRLE I-MTB 17.5
					YITUD I-MTB 14.6
					WUXUN I-MTB 11.5
					RODNE I-MTB 11.5
					ZILKU I-MTB 7.3
					WUXUN I-MTB 10
					ZILKU I-MTB 4.1
					ZILKU I-MTB 0.1
					CHRLE I-MTB 17.5
					YITUD I-MTB 14.6
					WUXUN I-MTB 11.5
					RODNE I-MTB 11.5
					ZILKU I-MTB 7.3
					WUXUN I-MTB 10
					ZILKU I-MTB 4.1
					ZILKU I-MTB 0.1
					CHRLE I-MTB 17.5
					YITUD I-MTB 14.6
					WUXUN I-MTB 11.5
					RODNE I-MTB 11.5
					ZILKU I-MTB 7.3
					WUXUN I-MTB 10
					ZILKU I-MTB 4.1
					ZILKU I-MTB 0.1
					CHRLE I-MTB 17.5
					YITUD I-MTB 14.6
					WUXUN I-MTB 11.5
					RODNE I-MTB 11.5
					ZILKU I-MTB 7.3
					WUXUN I-MTB 10
					ZILKU I-MTB 4.1
					ZILKU I-MTB 0.1
					CHRLE I-MTB 17.5
					YITUD I-MTB 14.6
					WUXUN I-MTB 11.5
					RODNE I-MTB 11.5
					ZILKU I-MTB 7.3
					WUXUN I-MTB 10
					ZILKU I-MTB 4.1
					ZILKU I-MTB 0.1
					CHRLE I-MTB 17.5
					YITUD I-MTB 14.6
					WUXUN I-MTB 11.5
					RODNE I-MTB 11.5
					ZILKU I-MTB 7.3
					WUXUN I-MTB 10
					ZILKU I-MTB 4.1
					ZILKU I-MTB 0.1
					CHRLE I-MTB 17.5
					YITUD I-MTB 14.6
					WUXUN I-MTB 11.5
					RODNE I-MTB 11.5
					ZILKU I-MTB 7.3
					WUXUN I-MTB 10
					ZILKU I-MTB 4.1
					ZILKU I-MTB 0.1
					CHRLE I-MTB 17.5
					YITUD I-MTB 14.6
					WUXUN I-MTB 11.5
					RODNE I-MTB 11.5
					ZILKU I-MTB 7.3
					WUXUN I-MTB 10
					ZILKU I-MTB 4.1
					ZILKU I-MTB 0.1
					CHRLE I-MTB 17.5
					YITUD I-MTB 14.6
					WUXUN I-MTB 11.5
					RODNE I-MTB 11.5
					ZILKU I-MTB 7.3
					WUXUN I-MTB 10
					ZILKU I-MTB 4.1
					ZILKU I-MTB 0.1
					CHRLE I-MTB 17.5
					YITUD I-MTB 14.6
					WUXUN I-MTB 11.5
					RODNE I-MTB 11.5
					ZILKU I-MTB 7.3
					WUXUN I-MTB 10
					ZILKU I-MTB 4.1
					ZILKU I-MTB 0.1
					CHRLE I-MTB 17.5
					YITUD I-MTB 14.6
					WUXUN I-MTB 11.5
					RODNE I-MTB 11.5
					ZILKU I-MTB 7.3
					WUXUN I-MTB 10
					ZILKU I-MTB 4.1
					ZILKU I-MTB 0.1
					CHRLE I-MTB 17.5
					YITUD I-MTB 14.6
					WUXUN I-MTB 11.5
					RODNE I-MTB 11.5
					ZILKU I-MTB 7.3
					WUXUN I-MTB 10
					ZILKU I-MTB 4.1
					ZILKU I-MTB 0.1
					CHRLE I-MTB 17.5
					YITUD I-MTB 14.6
					WUXUN I-MTB 11.5
					RODNE I-MTB 11.5
					ZILKU I-MTB 7.3
					WUXUN I-MTB 10
					ZILKU I-MTB 4.1
					ZILKU I-MTB 0.1
					CHRLE I-MTB 17.5
					YITUD I-MTB 14.6
					WUXUN I-MTB 11.5
					RODNE I-MTB 11.5
					ZILKU I-MTB 7.3
					WUXUN I-MTB 10
					ZILKU I-MTB 4.1
					ZILKU I-MTB 0.1
					CHRLE I-MTB 17.5
					YITUD I-MTB 14.6
					WUXUN I-MTB 11.5
					RODNE I-MTB 11.5
					ZILKU I-MTB 7.3
					WUXUN I-MTB 10
					ZILKU I-MTB 4.1
					ZILKU I-MTB 0.1
					CHRLE I-MTB 17.5
					YITUD I-MTB 14.6
					WUXUN I-MTB 11.5
					RODNE I-MTB 11.5
					ZILKU I-MTB 7.3
					WUXUN I-MTB 10
					ZILKU I-MTB 4.1
					ZILKU I-MTB 0.1
					CHRLE I-MTB 17.5
					YITUD I-MTB 14.6
					WUXUN I-MTB 11.5
					RODNE I-MTB 11.5