


MONTEREY FIVE DEPARTURE

AL-271 (FAA)


MONTEREY RGNL (MRY)
MONTEREY, CALIFORNIA


**TOP ALTITUDE:
7000**

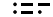
ATIS
 119.25
 CLNC DEL
 135.45
 GND CON
 120.875 348.6
 MONTEREY TOWER ★
 118.4 257.8
 NORCAL DEP CON
 133.0 251.15 (001°-135°)
 127.15 307.125 (136°-360°)


WOODSIDE
 113.9 OSI 
 Chan 86

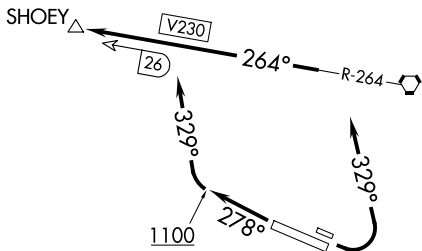
SAN JOSE
 114.1 SJC 
 Chan 88

SALINAS
 117.3 SNS 
 Chan 120

PANOCHÉ
 112.6 PXN 
 Chan 73

PASO ROBLES
 114.3 PRB 
 Chan 90

AVENAL
 117.1 AVE 
 Chan 118



TAKEOFF MINIMUMS

- Rwy 10L: Standard with minimum climb of 360' per NM to 1300.
- Rwy 10R: Standard with minimum climb of 390' per NM to 1200.
- Rwy 28L: Standard with minimum climb of 310' per NM to 1100.
- Rwy 28R: Standard.

NOTE: Chart not to scale.



DEPARTURE ROUTE DESCRIPTION

TAKEOFF RUNWAYS 10L/R: Climbing left turn heading 329°. Thence. . . .

TAKEOFF RUNWAYS 28L/R: Climb heading 278° until leaving 1100 or as directed by Monterey Tower. Then climbing right turn heading 329°. Thence. . . .

. . . . intercept SNS R-264 westbound to SHOHEY intersection. Maintain 7000 or assigned altitude. Expect clearance to filed altitude five minutes after departure.