

MONTGOMERY, ALABAMA


HI-ILS Y or LOC Y RWY 10

LOC I-MGM 109.9	APCH CRS 097°	Rwy Idg 9020
		TDZE 219
		Arpt Elev 232

[USAF] MONTGOMERY RGNL (DANNELLY FLD) (KMGM)

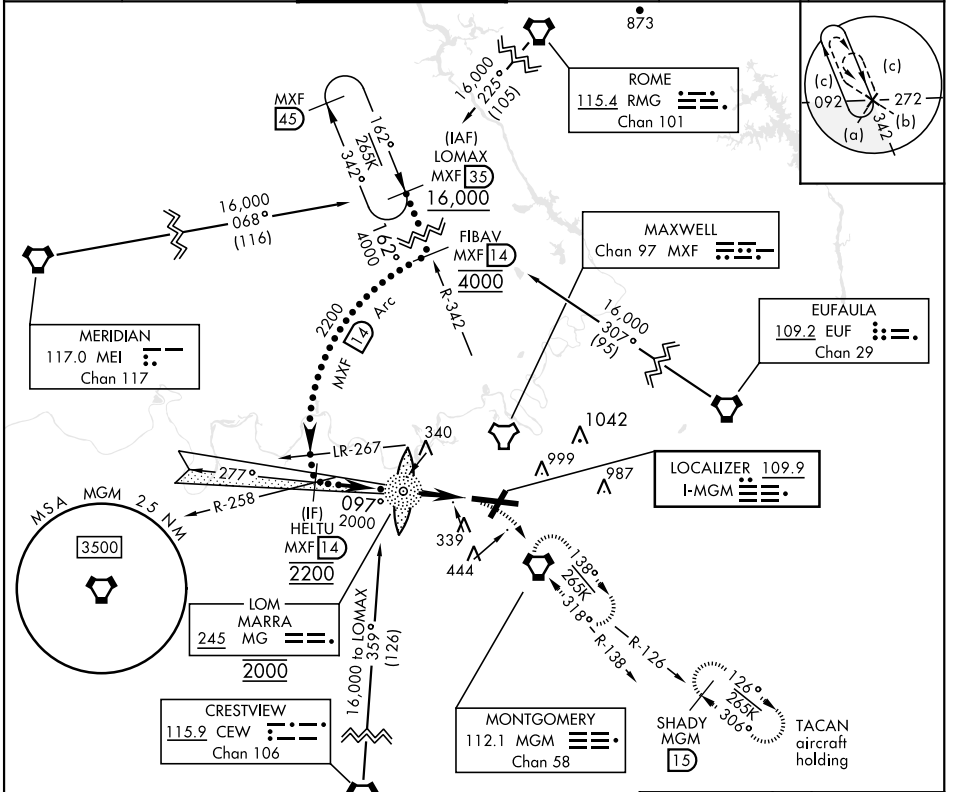
DME required. ADF and DME required for LOC only.

▼ *When ALS inop, increase RVR to 40 vis to 3/4 miles.
 **When ALS inop, increase vis to 1 1/2 miles.
 ▲ *** Circling not authorized for CAT E, N of Rwy 10-28.

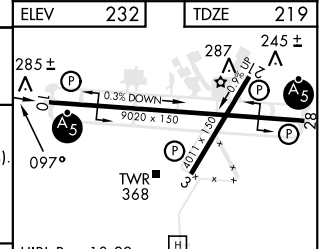
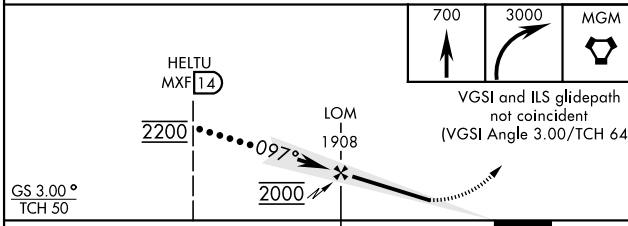
MALSRS 

MISSED APPROACH: Climb to 700 then climbing right turn to 3000 direct MGM VORTAC and hold, continue climb in hold to 3000.
 TACAN aircraft continue to 3500 on MGM R-126 to SHADY/MGM 15 DME and hold southeast, right turn, 306° inbound.

ATIS 120.675	APP CON ★ 124.0 363.025	DANNELLY TOWER ★ 119.7(CTAF) 0360.85	GND CON 121.7 348.6	CINC DEL 118.3 270.3	UNICOM 112.95
------------------------	-----------------------------------	--	-------------------------------	--------------------------------	-------------------------



EMERG SAFE ALT 100 NM 5000



CATEGORY	C	D	E	FAF to MAP 5.2 NM					
S-ILS 10 *	419/24	200	(200-1/2)	Knots	120	140	160	180	200
S-LOC 10 **	460/45	241	(500-7/8)	Min:Sec	2:36	2:14	1:57	1:44	1:34
*** CIRCLING	800-1 1/2 568 (600-1 1/2)	860-2 628 (700-2)	860-2 1/4 628 (700-2 1/4)						

MONTGOMERY, ALABAMA
 Amdt 9E 23JAN25

32°18'N-86°24'W

MONTGOMERY RGNL (DANNELLY FLD) (KMGM)

HI-ILS Y or LOC Y RWY 10

SE-4, 14 MAY 2026 to 11 JUN 2026

SE-4, 14 MAY 2026 to 11 JUN 2026