


LOC I-MGM <b>109.9</b>	APP CRS <b>097°</b>	Rwy Ldg TDZE Apt Elev	<b>9020</b> <b>219</b> <b>232</b>
---------------------------	------------------------	-----------------------------	---

# ILS Z or LOC Z RWY 10

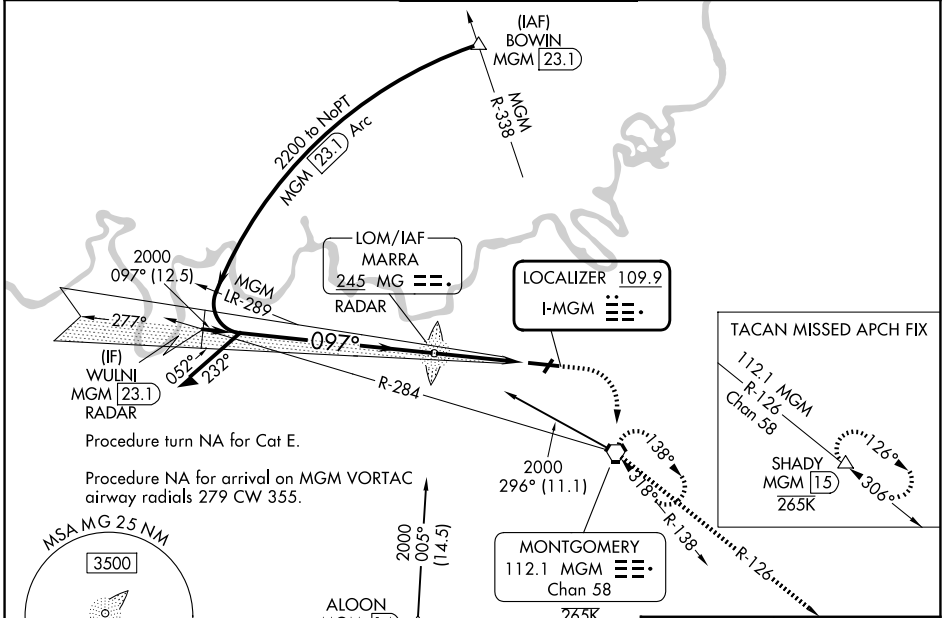
MONTGOMERY RGNL (DANNELLY FLD) (MGM)

**RADAR or DME or ADF required.**

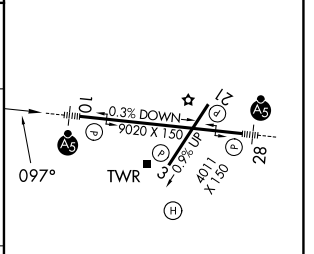
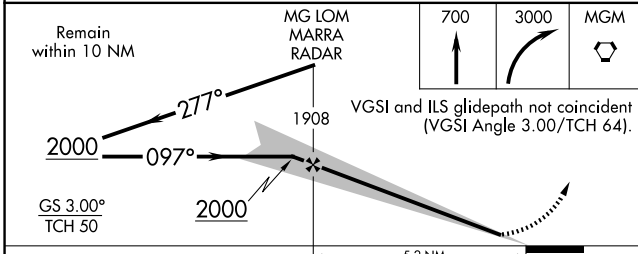
**⚠** Circling NA for Cat E north of Rwy 10-28. For inop ALS, increase S-ILS 10\*\* Cat E visibility to RVR 4000, and increase S-LOC 10 Cat E visibility to 1 $\frac{3}{8}$  SM. \*\*RVR 1800 authorized with the use of FD or AP or HUD to DA.

**MALSR**  MISSED APPROACH: Climb to 700 then climbing right turn to 3000 direct MGM VORTAC and hold, continue climb-in-hold to 3000 (TACAN aircraft continue climb to 3500 on MGM VORTAC R-126 to SHADY/MGM 1.5 DME and hold SE, RT, 306° inbound).

ATIS <b>120.675</b>	MONTGOMERY APP CON* <b>124.0 363.025</b>	DANNELLY TOWER* <b>119.7 (CTAF) 360.85</b>	GND CON <b>121.7 348.6</b>	UNICOM <b>122.95</b>
------------------------	---	---	-------------------------------	-------------------------



ELEV 232	TDZE 219
----------	----------



CATEGORY	A	B	C	D	E	FAF to MAP 5.2 NM					
S-ILS 10**	419/24 200 (200- $\frac{1}{2}$ )					Knots	60	90	120	150	180
S-LOC 10	660/24	441 (500- $\frac{1}{2}$ )	660/45 441 (500- $\frac{7}{8}$ )			Min:Sec	5:12	3:28	2:36	2:05	1:44
CIRCLING	700-1	468 (500-1)	800-1 $\frac{1}{2}$ 568 (600-1 $\frac{1}{2}$ )	860-2 628 (700-2)	860-2 $\frac{1}{4}$ 628 (700-2 $\frac{1}{4}$ )	REIL Rwy 3 MIRL Rwy 3-21 HIRL Rwy 10-28					

SE-4, 14 MAY 2026 to 11 JUN 2026

SE-4, 14 MAY 2026 to 11 JUN 2026