

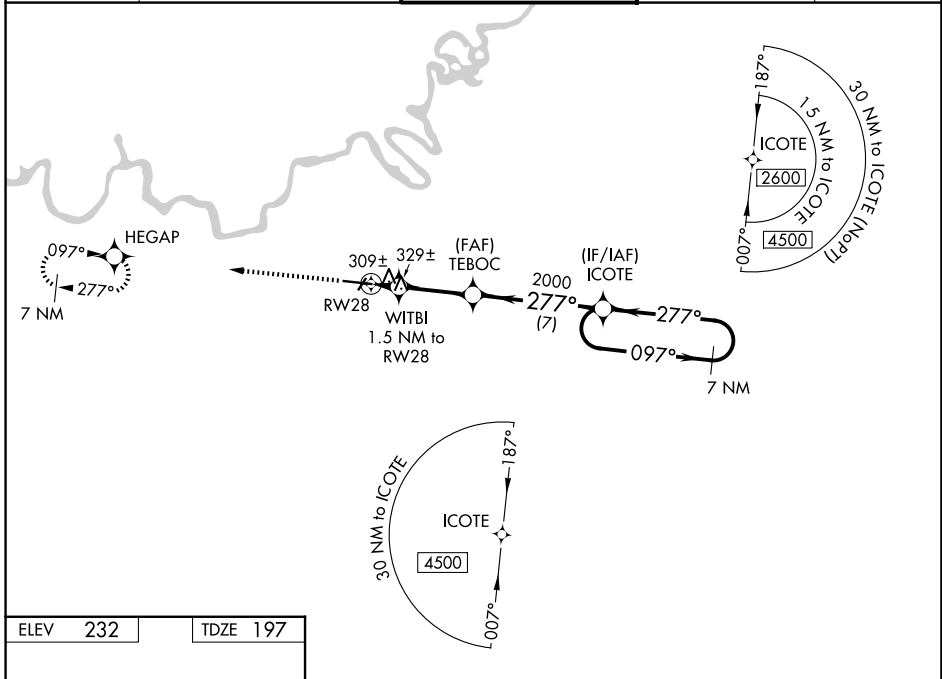
WAAS CH 56200 W28A	APP CRS 277°	Rwy Ldg TDZE Apt Elev	9020 197 232
--	------------------------	-----------------------------	---

RNAV (GPS) RWY 28

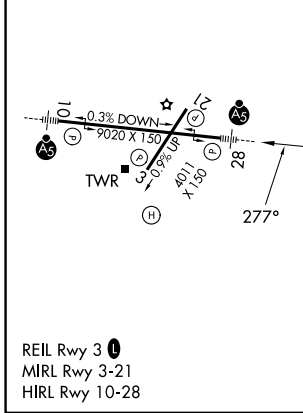
MONTGOMERY RGNL (DANNELLY FLD) (MGM)

RNP APCH-GPS.	MALSR 	MISSED APPROACH: Climb to 3100 direct HEGAP and hold.
<p>▼ For uncompensated Baro-VNAV systems, LNAV/VNAV NA below -8°C or above 54°C.</p> <p>▲ For inop MALSR, increase LPV Cat E visibility to 3/4 mile; increase LNAV/VNAV Cat E visibility to 1 3/8 mile; increase LNAV Cat E visibility to 1 1/8 mile. Circling for Cat E NA north of Rwy 10-28.</p>		

ATIS 120.675	MONTGOMERY APP CON* 124.0 363.025	DANNELLY TOWER* 119.7 (CTAF) 360.85	GND CON 121.7 348.6	UNICOM 122.95
------------------------	---	---	-------------------------------	-------------------------



ELEV 232	TDZE 197
----------	----------



3100	HEGAP	VGSI and RNAV glidepath not coincident (VGSI Angle 3.00/TCH 75).	7 NM Holding Pattern	
	WITBI	TEBOC	ICOTE	
	1.5 NM to RWY 28	2000	2600	
	1 NM to RWY 28	720	2000	
	1 NM	0.5	4 NM	7 NM
			097° →	← 277°
				GP 3.00° TCH 56

CATEGORY	A	B	C	D	E
LPV DA	397-1/2		200 (200-1/2)		
LNAV/VNAV DA	606-7/8		409 (400-7/8)		
LNAV MDA	580-1/2	383 (400-1/2)	580-5/8		383 (400-5/8)
CIRCLING	700-1	468 (500-1)	800-1/2 568 (600-1/2)	860-2 628 (700-2)	860-2 1/4 628 (700-2 1/4)

SE-4, 14 MAY 2026 to 11 JUN 2026

SE-4, 14 MAY 2026 to 11 JUN 2026