

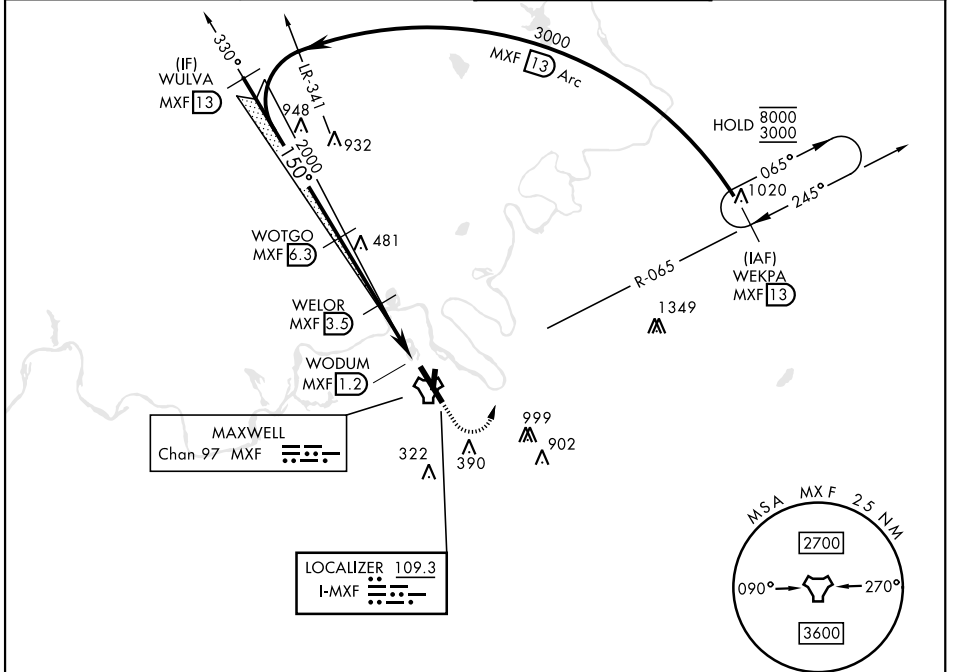
ILS or LOC/DME RWY 15

LOC I-MXF 109.3	APCH CRS 150°	Rwy Idg 8008
		TDZE 171
		Arprt Elev 171

[USAF]

MAXWELL AFB (KMXF)

RADAR required for missed approach. * When ALS inop, increase RVR to 40 and vis to ¾ mile. ** When ALS inop, increase CAT AB RVR to 35 and vis to 1 mile, CAT CDE vis to 1¼ mile. *** Circling not authorized E of Rwy 15-33.		ALSF-1 	MISSED APPROACH: Climb to 1000, then climbing left turn to 3000 to intercept MXF TACAN R-065 outbound to 13 DME (WEKPA) and hold.
ATIS ★ 134.7 269.9	MONTGOMERY APP CON ★ 121.2 269.05 (N) 124.0 363.025 (S)	TOWER ★ 118.15 253.5	GND CON ★ 127.15 289.4



SE-4, 14 MAY 2026 to 11 JUN 2026

SE-4, 14 MAY 2026 to 11 JUN 2026

EMERG SAFE ALT 100 NM 5000

WULVA MXF 13 3000 150° 2000 1100 WOTGO MXF 6.3 WELOR MXF 3.5 WODUM MXF 1.2 GS 3.00° TCH 51 2.8 NM 2.3 NM 0.5	1000 3000 WEKPA R-065 MXF 13 R-065	ELEV 171 TDZE 171
CATEGORY S-ILS 15 * S-LOC 15 ** CIRCLING ***	A B C D E	LANDING ZONE TWAR 150° 3015 x 60 3015 x 120 3015 x 180 3015 x 240 331 240 264 246 317
371/24 200 (200-½) 600/24 429 (500-½) 700-1½ 920-2½ 529 (600-1½) 749 (800-2½)	NA	HIRL Rwy 15-33

ILS or LOC/DME RWY 15