

MONTGOMERY, ALABAMA

RNAV (GPS) RWY 15

APCH CRS 150°	Rwy Idg 8008
	TDZE 171
	Arprt Elev 171

- (USAF)

MAXWELL AFB (KMXF)

RNP APCH-GPS



MISSED APPROACH: Climb to 1000 then climbing left turn to 3000 direct WEKPA and hold.

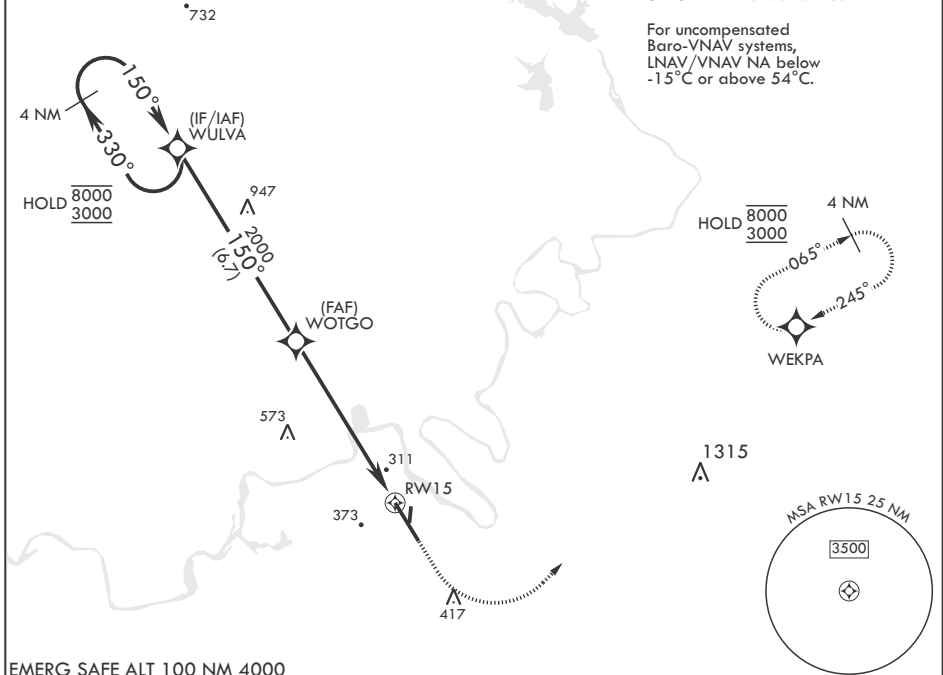
▼ * When ALS inop, increase vis to 1 1/4 miles.
 ** When ALS inop, increase CAT AB RVR to 55, vis to 1 mile; CAT CDE vis to 2 miles.

ATIS★ 134.7 269.9	MONTGOMERY APP CON/DEP CON★ 121.2 269.05 N 124.0 363.025 S	TOWER★ 118.15 253.5	GND CON★ 127.15 289.4
-----------------------------	--	-------------------------------	---------------------------------

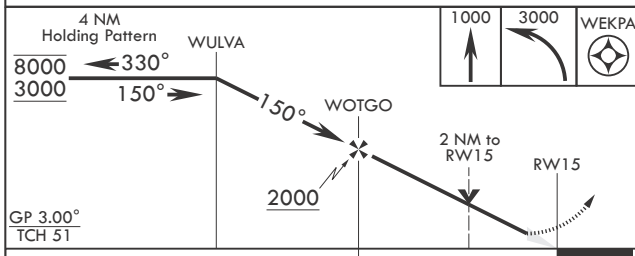
*** Circling not authorized NE of Rwy 15-33

SBAS VNAV not authorized.

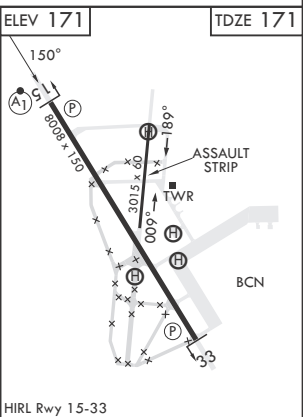
For uncompensated Baro-VNAV systems, LNAV/VNAV NA below -15°C or above 54°C.



EMERG SAFE ALT 100 NM 4000



GP 3.00° TCH 51					
CATEGORY	A	B	C	D	E
LNAV/VNAV DA*	593/40		422	(500-¾)	
LNAV MDA**	860/24	689 (700-½)	860-1½	689	(700-1½)
CIRCLING***	860-1	689 (700-1)	860-2 689 (700-2)	920-2½ 749 (800-2½)	NA



MONTGOMERY, ALABAMA

32°23'N - 86°22'W

MAXWELL AFB (KMXF)

Orig 20MAR25

RNAV (GPS) RWY 15

SE-4, 14 MAY 2026 to 11 JUN 2026

SE-4, 14 MAY 2026 to 11 JUN 2026