

TACAN RWY 15

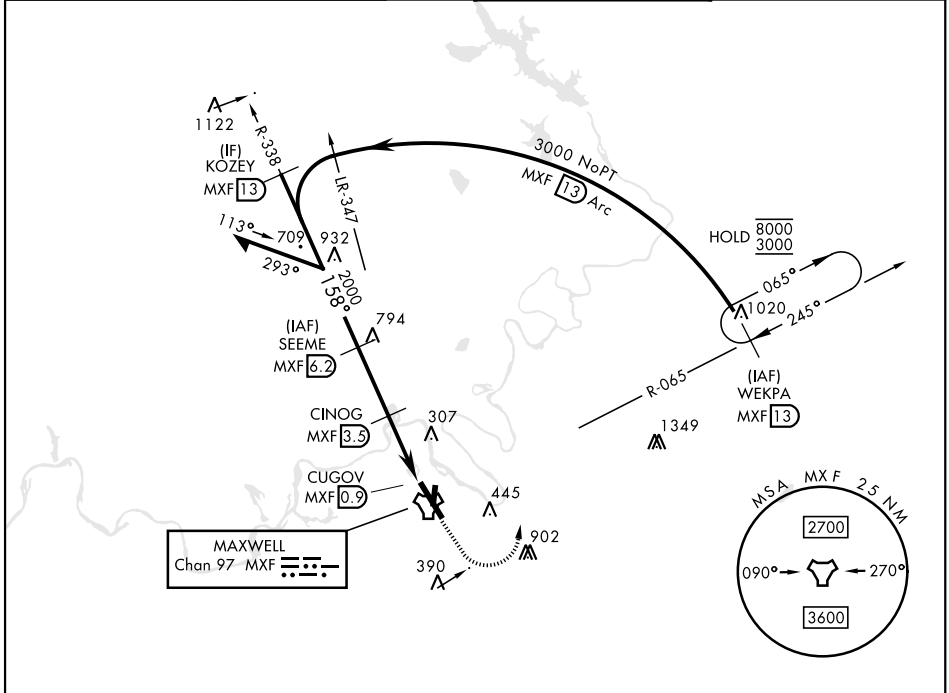
TACAN MXF Chan 97	APCH CRS 158°	Rwy Idg TDZE 171 Arpt Elev 171
-----------------------------	-------------------------	--

[USAF]

MAXWELL AFB (KMXF)

RADAR required for missed approach.		ALSF-1 	MISSED APPROACH: Climb to 1000, then climbing left turn to 3000 to intercept MXF TACAN R-065 outbound to 13 DME (WEKPA) and hold.
▼ * When ALS inop, increase CAT AB RVR to 55 and vis to 1 mile, CAT CDE and vis to 1½ miles. ** Circling not authorized E of Rwy 15-33.			

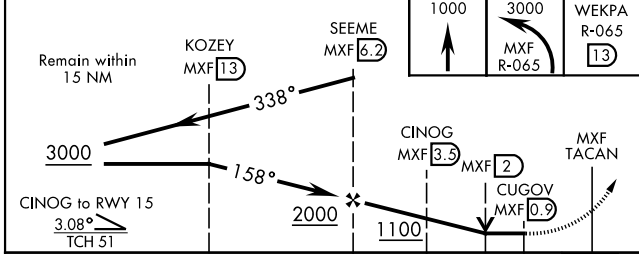
ATIS ★ 134.7 269.9	MONTGOMERY APP CON ★ 121.2 269.05 (N) 124.0 363.025 (S)	TOWER ★ 118.15 253.5	GND CON ★ 127.15 289.4
------------------------------	---	--------------------------------	----------------------------------



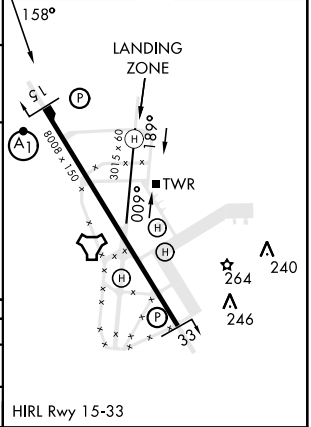
SE-4, 14 MAY 2026 to 11 JUN 2026

SE-4, 14 MAY 2026 to 11 JUN 2026

EMERG SAFE ALT 100 NM 5000



ELEV	171	TDZE	171
------	-----	------	-----



CATEGORY	A	B	C	D	E
S-15 *	620/24	449 (500-½)	620/45	449 (500-7%)	
CIRCLING **	680-1	509 (600-1)	700-1½ 529 (600-1½)	920-2½ 749 (800-2½)	NA

TACAN RWY 15