

HI-ILS or LOC Y RWY 19

LOC I-MTC 110.1	APCH CRS 187°	Rwy Idg 10,010 TDZE 579 Arprt Elev 580
---------------------------	-------------------------	--

[USAF]

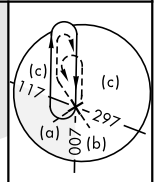
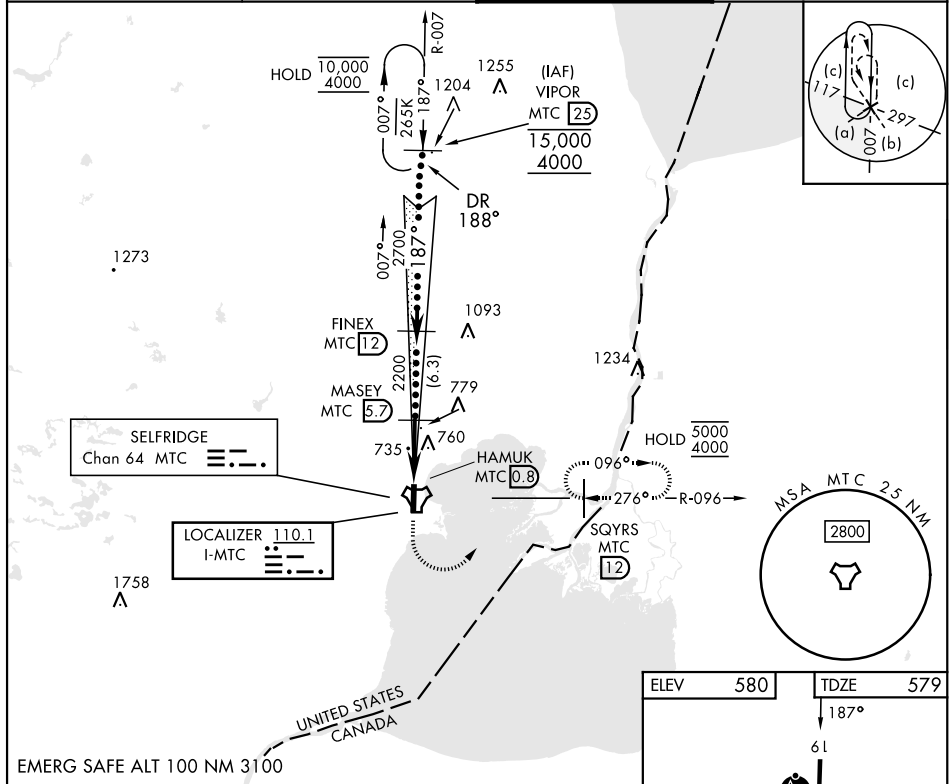
SELFRIDGE ANGB (KMTC)

▼ *When ALS inop, increase RVR to 40, vis to ¾ mile.
 **When ALS inop, increase vis to 1 ¾ miles.
 ***Circling not authorized W of Rwy 01-19.



MISSED APPROACH: Climbing left turn to 4000, intercept MTC R-096 to SQYRS and hold, continue climb-in-hold to 4000.

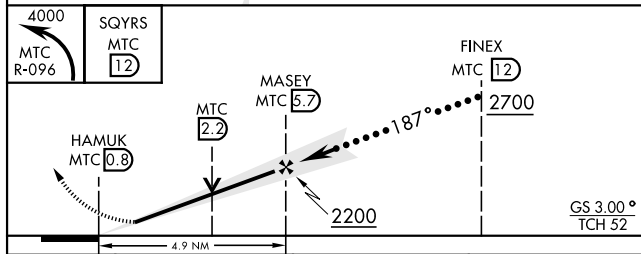
ATIS 125.325 270.1	APP CON ★ 119.6 391.9	TOWER ★ 120.15 (CTAF) 0 225.4	GND CON 128.3 275.8
------------------------------	---------------------------------	---	-------------------------------



SELFRIDGE
Chan 64 MTC

LOCALIZER 110.1
I-MTC

EMERG SAFE ALT 100 NM 3100



ELEV 580	TDZE 579
187°	
61	
A1 P	
TWR ☆	
10,010 x 150	
P A2	
01	
HIRL Rwy 01-19	
REIL Rwy 19	
FAF to MAP 4.9 NM	
Knots	120 140 160 180 200
Min:Sec	2:27 2:06 1:50 1:38 1:28

CATEGORY	C	D	E
S-ILS 19 *	779/24	200 (200-½)	
S-LOC 19 **	1060/50	481 (500-1)	
CIRCLING ***	1060-1½ 480 (500-1½)	1140-2	560 (600-2)

HI-ILS or LOC Y RWY 19

EC-1, 14 MAY 2026 to 11 JUN 2026

EC-1, 14 MAY 2026 to 11 JUN 2026