

MT. CLEMENS, MICHIGAN

HI-TACAN Y RWY 1

TACAN MTC Chan 64	APCH CRS 018°	Rwy ldg TDZE Arprt Elev 9001 580 580
-----------------------------	-------------------------	--

[USAF]

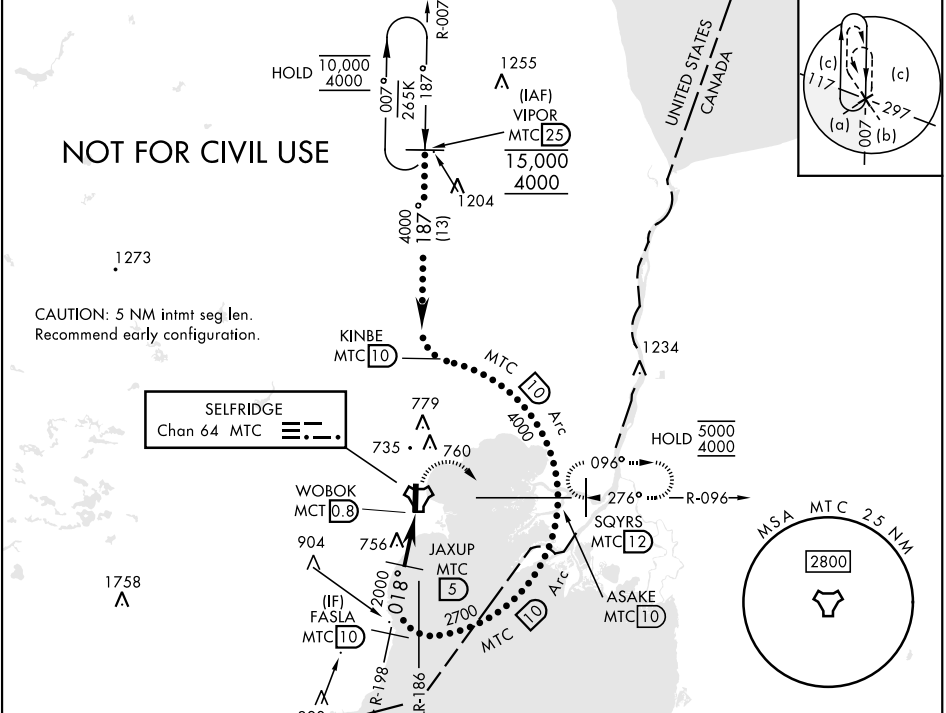
SELFRIDGE ANGB (KMTC)

▼ * When ALS inop, increase vis to 1 1/2 miles.
 ** Circling not authorized W of Rwy 01-19.

SALS **A2**

MISSED APPROACH: Climbing right turn to 4000, intercept MTC R-096 to SQYRS and hold, continue to climb in hold to 4000.

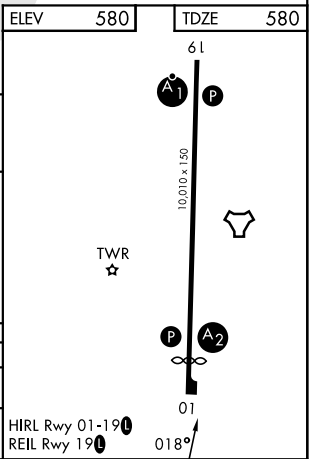
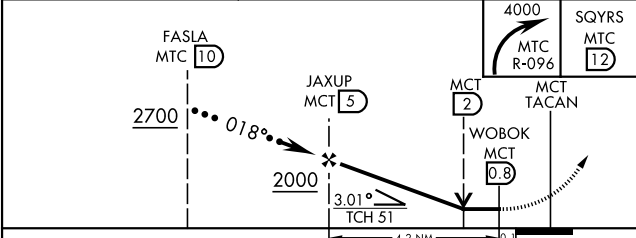
ATIS 125.325 270.1	APP CON ★ 119.6 391.9	TOWER ★ 120.15 (CTAF) 0 225.4	GND CON 128.3 275.8
------------------------------	---------------------------------	---	-------------------------------



EC-1, 14 MAY 2026 to 11 JUN 2026

EC-1, 14 MAY 2026 to 11 JUN 2026

ELEV	580	TDZE	580
------	-----	------	-----



CATEGORY	C	D	E
S-1*	1040/55	460 (500-1)	
CIRCLING **	1040-1 1/2 460 (500-1 1/2)	1140-2	560 (600-2)

HIRL Rwy 01-19 **0**
 REIL Rwy 19 **0** 018°

MT. CLEMENS, MICHIGAN

42° 37' N-82° 50' W

SELFRIDGE ANGB (KMTC)

Amdt 3 26DEC24

HI-TACAN Y RWY 1