

MT. CLEMENS, MICHIGAN

HI-TACAN Y RWY 19

TACAN MTC Chan 64	APCH CRS 177°	Rwy ldg TDZE Arprt Elev 10,010 579 580
-----------------------------	-------------------------	--

[USAF]

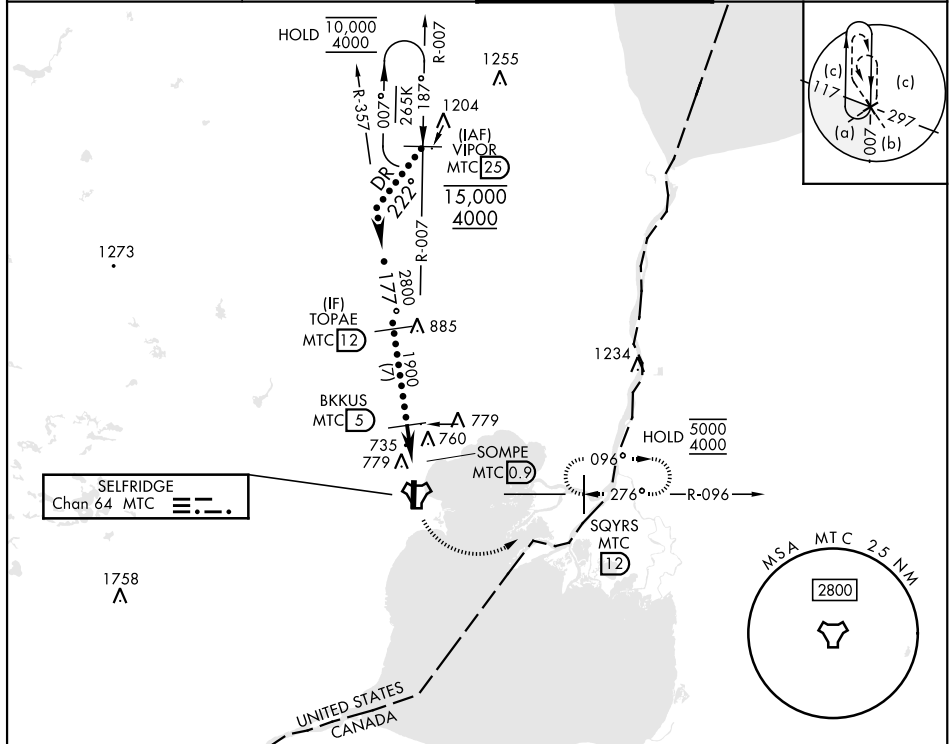
SELFRIDGE ANGB (KMTC)

▼ * When ALS inop, increase vis to 1 1/2 miles.
 ** Circling not authorized W of Rwy 01-19.



MISSED APPROACH: Climbing left turn to 4000, intercept MTC R-096 to SQYRS and hold, continue climb-in-hold to 4000.

ATIS 125.325 270.1	APP CON ★ 119.6 391.9	TOWER ★ 120.15 (CTAF) 0 225.4	GND CON 128.3 275.8
------------------------------	---------------------------------	---	-------------------------------

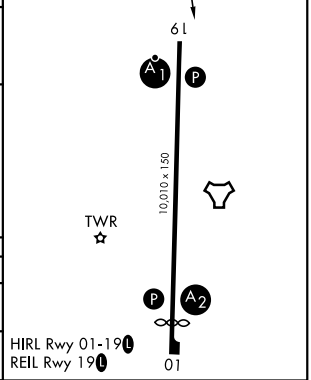


EMERG SAFE ALT 100 NM 3100

ELEV 580	TDZE 579
----------	----------



CATEGORY	C	D	E
S-19*	1040/50	461 (500-1)	
CIRCLING**	1040-1 1/2 460 (500-1 1/2)	1140-2	560 (600-2)



MT. CLEMENS, MICHIGAN

42°37'N-82°50'W

SELFRIDGE ANGB (KMTC)

Amdt 4 26DEC24

HI-TACAN Y RWY 19

EC-1, 14 MAY 2026 to 11 JUN 2026

EC-1, 14 MAY 2026 to 11 JUN 2026