

MT. CLEMENS, MICHIGAN

# ILS or LOC Z RWY 19

LOC I-MTC <b>110.1</b>	APCH CRS <b>187°</b>	Rwy Idg <b>10,010</b>
		TDZE <b>579</b>
		Arprt Elev <b>580</b>

[USAF]

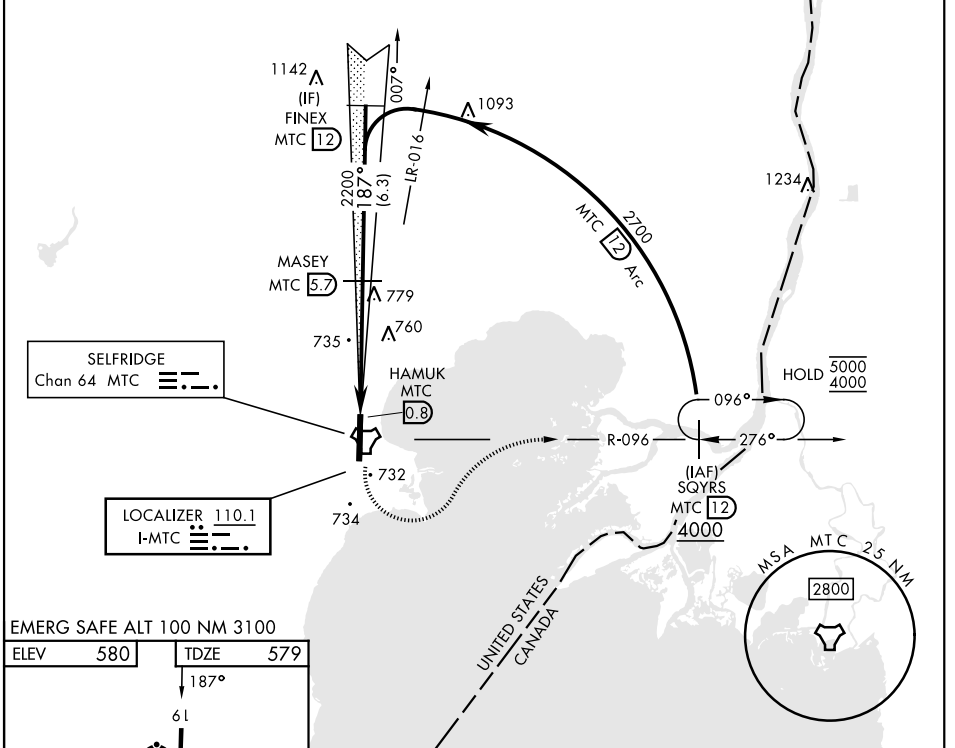
SELFRIDGE ANGB (KMTC)

- ▼ \* When ALS inop, increase RVR to 40, vis to ¼ mile.
- \*\* When ALS inop, increase CAT AB RVR to 55, vis to 1 mile, CAT CDE vis to 1½ miles.
- \*\*\* Circling not authorized W of Rwy 01-19.



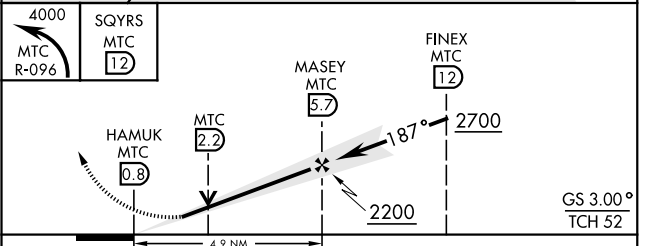
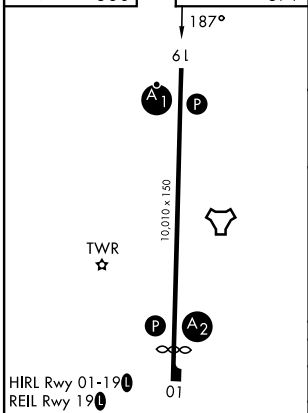
MISSED APPROACH: Climbing left turn to 4000, intercept MTC R-096 to SQYRS and hold, continue climb-in-hold to 4000.

ATIS <b>125.325 270.1</b>	APP CON ★ <b>119.6 391.9</b>	SELFRIDGE TOWER ★ <b>120.15 (CTAF) 225.4</b>	GND CON <b>128.3 275.8</b>
------------------------------	---------------------------------	---	-------------------------------



EMERG SAFE ALT 100 NM 3100

ELEV	580	TDZE	579
------	-----	------	-----



CATEGORY	A	B	C	D	E
S-ILS 19*	779/24		200	(200-½)	
S-LOC 19**	1060/24	481 (500-½)	1060/50	481 (500-1)	
CIRCLING ***	1060-1 480 (500-1)		1060-1½ 480 (500-1½)	1140-2 560 (600-2)	

MT. CLEMENS, MICHIGAN  
Amdt 4 26DEC24

42°37'N-82°50'W

SELFRIDGE ANGB (KMTC)

# ILS or LOC Z RWY 19

EC-1, 14 MAY 2026 to 11 JUN 2026

EC-1, 14 MAY 2026 to 11 JUN 2026