

MT. CLEMENS, MICHIGAN

RNAV (GPS) RWY 1

APCH CRS	Rwy Idg	9001
007°	TDZE	580
	Arpt Elev	580

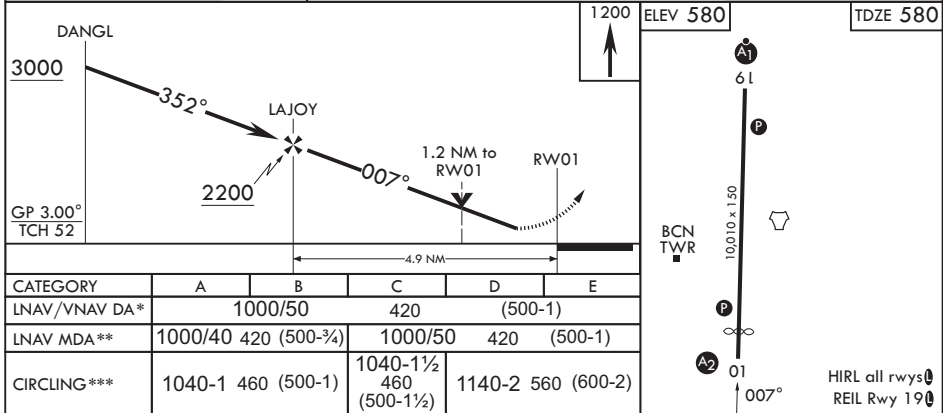
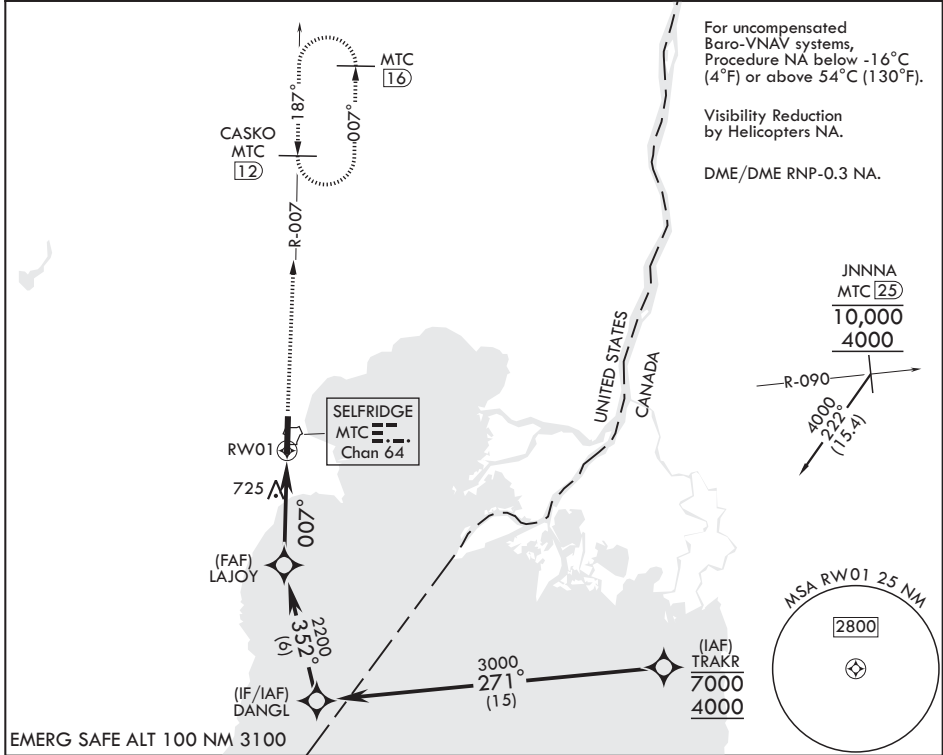
(USAF)

SELFRIDGE ANGB (KMTC)

▼ * When ALS inop increase RVR to 60, vis to 1 1/8 miles.
 ** When ALS inop increase CAT AB RVR to 55, vis to 1 mile; CAT CDE RVR to 60, vis to 1 1/8 miles.
 *** Circling not authorized W of Rwy 01-19.

SALS MISSED APPROACH: Climb to 1200 then climbing right turn to 4000 direct CASKO (MTC TACAN R-007/12 DME) and hold, continue climb-in-hold to 4000.

ATIS 125.325 270.1	APP CON/DEP CON* 119.6 391.9	TOWER* 120.15 (CTAF) 225.4	GND CON 128.3 275.8
-----------------------	---------------------------------	-------------------------------	------------------------



MT. CLEMENS, MICHIGAN
 Orig 20MAY21

42°37'N - 82°50'W

SELFRIDGE ANGB (KMTC)

RNAV (GPS) RWY 1

EC-1, 14 MAY 2026 to 11 JUN 2026

EC-1, 14 MAY 2026 to 11 JUN 2026