

MT. CLEMENS, MICHIGAN

RNAV (GPS) RWY 19

APCH CRS 187°	Rwy ldg 10,010
THRE 579	Arprt Elev 580

[USAF]

SELFRIDGE ANGB (KMTC)

DME/DME RNP-0.3 NA.



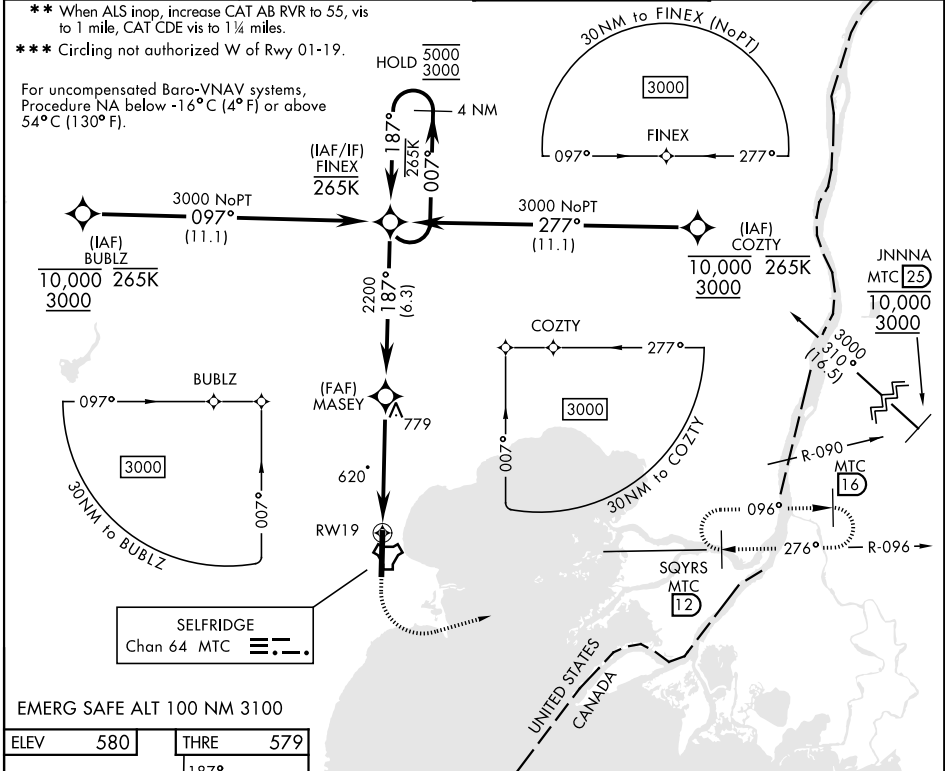
MISSED APPROACH: Climb to 1200 then climbing left turn to 4000 direct SQYRS (MTC TACAN R-096/T2DME), do not exceed 250 KIAS until turn completion and hold, continue climb-in-hold to 4000.

▲ * When ALS inop, increase vis to 1 1/4 miles.

ATIS 125.325 270.1	APP CON ★ 119.6 391.9	SELFRIDGE TOWER ★ 120.15 (CTAF) 225.4	GND CON 128.3 275.8
------------------------------	---------------------------------	---	-------------------------------

** When ALS inop, increase CAT AB RVR to 55, vis to 1 mile, CAT CDE vis to 1 1/4 miles.
*** Circling not authorized W of Rwy 01-19.

For uncompensated Baro-VNAV systems, Procedure NA below -16°C (4°F) or above 54°C (130°F).

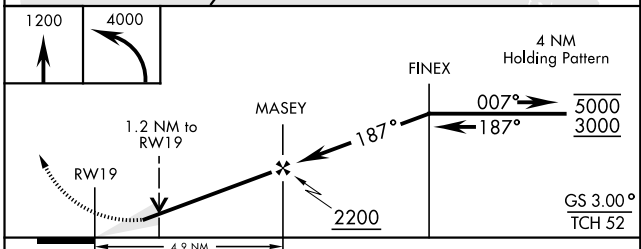
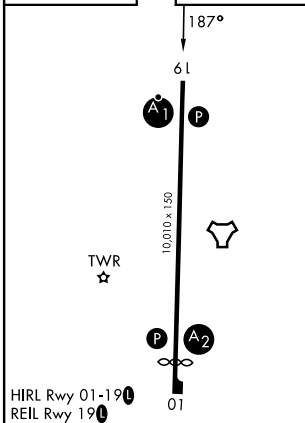


EC-1, 14 MAY 2026 to 11 JUN 2026

EC-1, 14 MAY 2026 to 11 JUN 2026

EMERG SAFE ALT 100 NM 3100

ELEV	580	THRE	579
------	-----	------	-----



CATEGORY	A	B	C	D	E
LNAV/VNAV DA*	1000/40		421	(500-3/4)	
LNAV MDA**	1000/24	421 (500-1/2)	1000/40	421	(500-3/4)
CIRCLING***	1040-1	460 (500-1)	1040-1 1/2 460 (500-1 1/2)	1140-2	560 (600-2)

MT. CLEMENS, MICHIGAN

42° 37' N-82° 50' W

SELFRIDGE ANGB (KMTC)

Orig 12AUG21

RNAV (GPS) RWY 19