

MT. CLEMENS, MICHIGAN

TACAN Z RWY 19

TACAN MTC Chan 64	APCH CRS 177°	Rwy ldg TDZE 579	Arpt Elev 580
-----------------------------	-------------------------	----------------------------	-------------------------

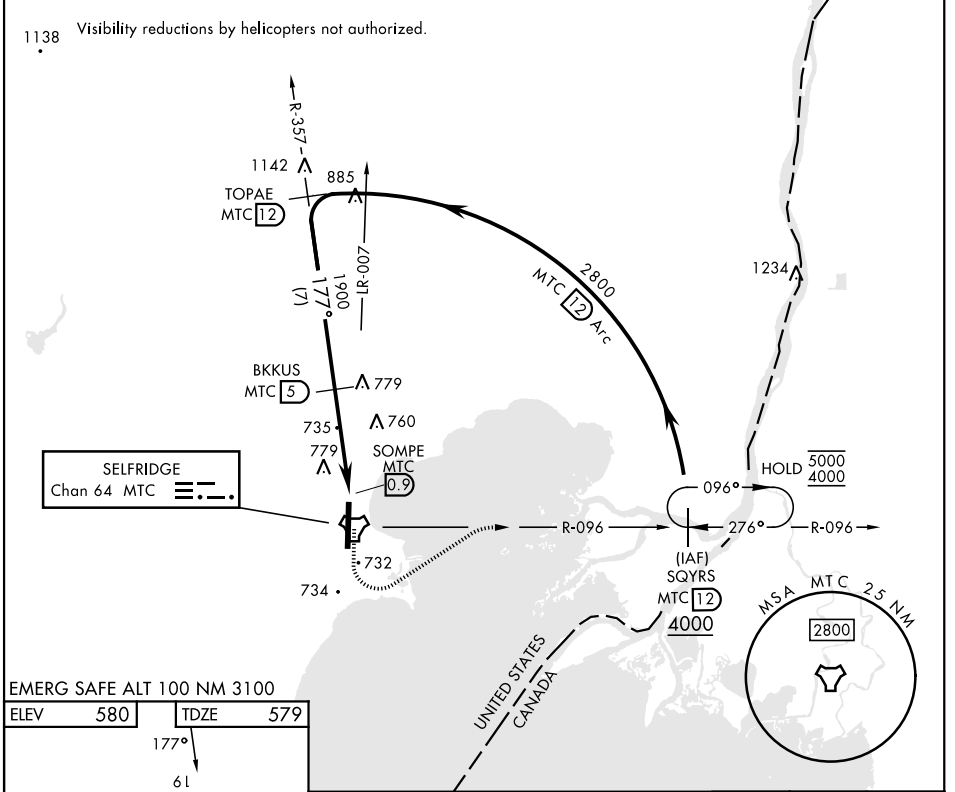
[USAF]

SELFRIDGE ANGB (KMTC)

▼ * When ALS inop, increase CAT AB RVR to 55, vis to 1 mile, CAT CDE vis to 1½ miles.
** Circling not authorized W of Rwy 01-19.

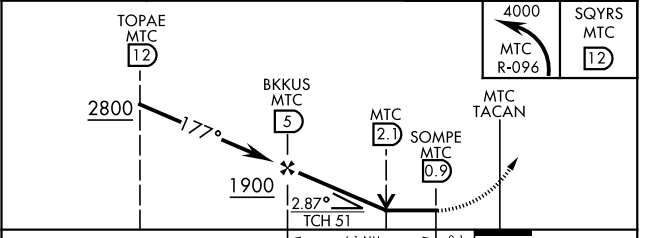
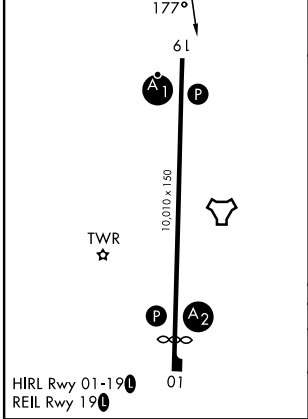
ALSF-1 MISSED APPROACH: Climbing left turn to 4000, intercept MTC R-096 to SQYRS and hold, continue climb-in-hold to 4000.

ATIS 125.325 270.1	APP CON ★ 119.6 391.9	SELFRIDGE TOWER ★ 120.15 (CTAF) 225.4	GND CON 128.3 275.8
------------------------------	---------------------------------	---	-------------------------------



EMERG SAFE ALT 100 NM 3100

ELEV 580	TDZE 579
----------	----------



CATEGORY	A	B	C	D	E
S-19 *	1040/40 461 (500-¾)		1040/50 461 (500-1)		
CIRCLING **	1040-1 460 (500-1)		1040-1½ 460 (500-1½)	1140-2 560 (600-2)	

MT. CLEMENS, MICHIGAN

42° 37' N-82° 50' W

SELFRIDGE ANGB (KMTC)

Amdt 4 26DEC24

TACAN Z RWY 19

EC-1, 14 MAY 2026 to 11 JUN 2026

EC-1, 14 MAY 2026 to 11 JUN 2026