

(ZETTR4.ZETTR) 25219

# ZETTR FOUR DEPARTURE (RNAV)

AL-276 (FAA)

SELFRIDGE ANGB (KMTC)

MOUNT CLEMENS, MICHIGAN

SELFRIDGE DEP CON ★

119.6 391.9

ATIS

125.325 270.1

CLNC DEL

128.3 275.8

GND CON

128.3 275.8

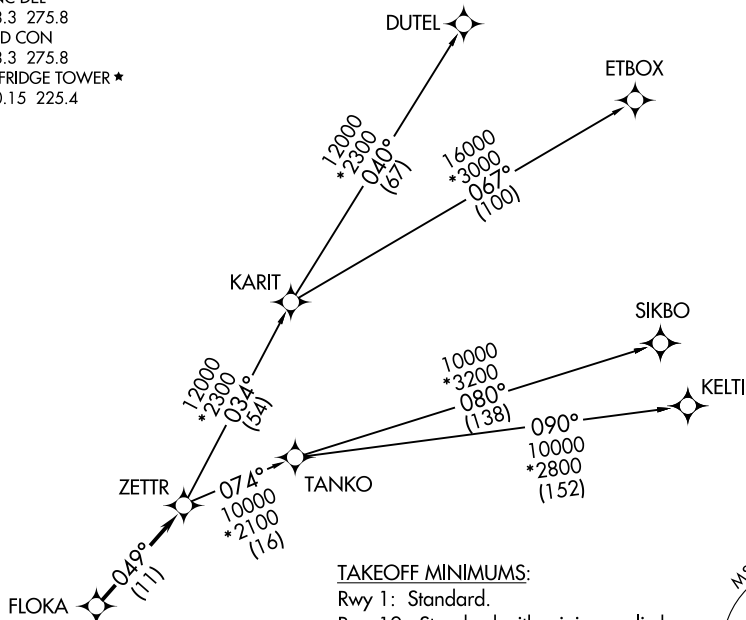
SELFRIDGE TOWER ★

120.15 225.4

RNAV 1 - DME/DME/IRU or GPS.

RADAR required.

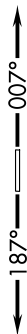
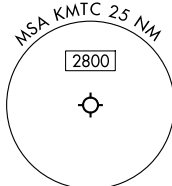
**TOP ALTITUDE:  
ASSIGNED BY ATC**



### TAKEOFF MINIMUMS:

Rwy 1: Standard.

Rwy 19: Standard with minimum climb of 235' per NM to 1500.



NOTE: Turbojet departures at/above 10000, maintain 280K until advised by ATC.  
 NOTE: TANKO Transition: For use by CYYZ area arrivals only, or as assigned by ATC.

NOTE: Chart not to scale.

### DEPARTURE ROUTE DESCRIPTION

TAKEOFF RUNWAY 1: Climb on heading 007° or as assigned by ATC, thence....

TAKEOFF RUNWAY 19: Climb on heading 187° or as assigned by ATC, thence....

...for RADAR vectors to FLOKA, then on track 049° to ZETTR, then on (transition). Maintain ATC assigned altitude, expect filed altitude 10 minutes after departure.

DUTEL TRANSITION (ZETTR4.DUTEL):

ETBOX TRANSITION (ZETTR4.ETBOX):

KELTI TRANSITION (ZETTR4.KELTI):

SIKBO TRANSITION (ZETTR4.SIKBO):

TANKO TRANSITION (ZETTR4.TANKO):

# ZETTR FOUR DEPARTURE (RNAV)

(ZETTR4.ZETTR) 16MAY24

MOUNT CLEMENS, MICHIGAN

SELFRIDGE ANGB (KMTC)

EC-1, 14 MAY 2026 to 11 JUN 2026

EC-1, 14 MAY 2026 to 11 JUN 2026