

WAAS CH <b>69410</b> <b>W14A</b>	APP CRS <b>141°</b>	Rwy Ldg TDZE Apt Elev	<b>6100</b> <b>627</b> <b>629</b>
--	------------------------	-----------------------------	---

# RNAV (GPS) RWY 14

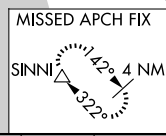
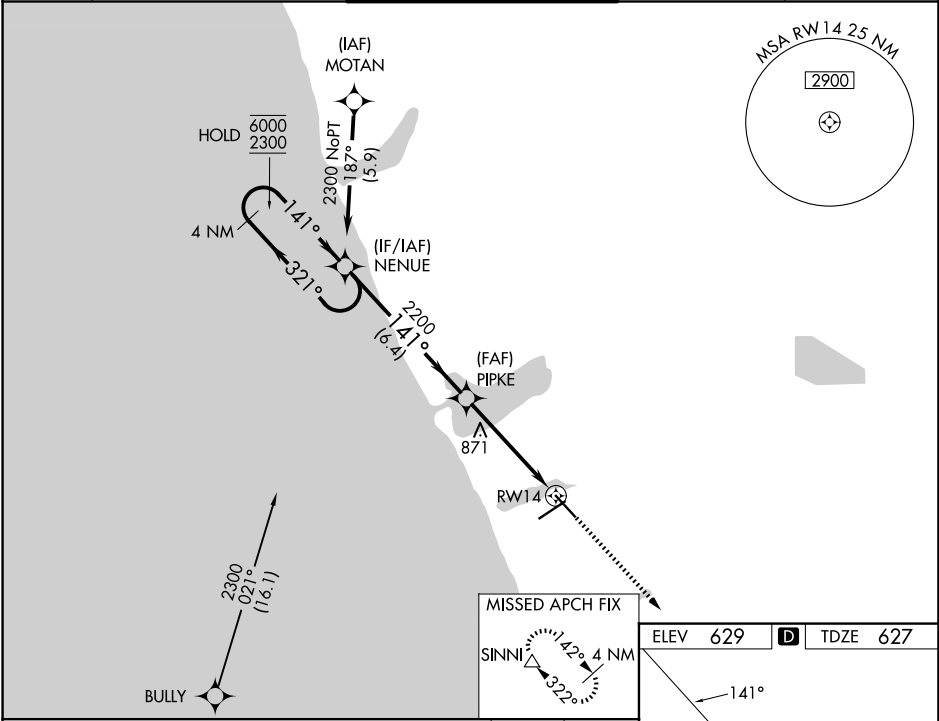
MUSKEGON COUNTY (MKG)

RNP APCH.

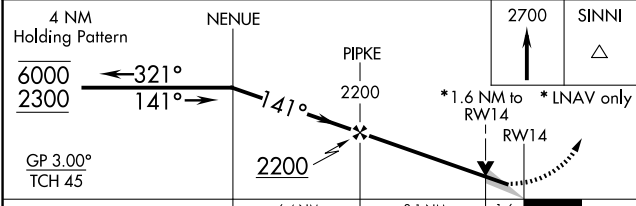
**▽** For uncompensated Baro-VNAV systems, LNAV/VNAV NA below -18°C or above 54°C.

MISSED APPROACH:  
Climb to 2700 direct  
SINNI and hold.

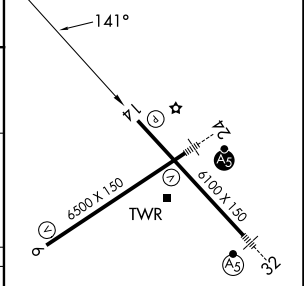
ATIS <b>124.3</b>	GREAT LAKES APP CON * <b>119.8 290.35 (N)</b> <b>133.825 290.35 (S)</b>	MUSKEGON TOWER * <b>126.25 (CTAF) 0 343.725</b>	GND CON <b>121.6</b>	UNICOM <b>122.95</b>
----------------------	---	--	-------------------------	-------------------------



ELEV 629	<b>D</b>	TDZE 627
----------	----------	----------



CATEGORY	A	B	C	D
LPV DA		877- <sup>3</sup> / <sub>4</sub>	250 (300- <sup>3</sup> / <sub>4</sub> )	
LNAV/VNAV DA		1079-1 <sup>1</sup> / <sub>2</sub>	452 (500-1 <sup>1</sup> / <sub>2</sub> )	
LNAV MDA	1180-1	553 (600-1)	1180-1 <sup>1</sup> / <sub>2</sub> 553 (600-1 <sup>1</sup> / <sub>2</sub> )	1180-1 <sup>3</sup> / <sub>4</sub> 553 (600-1 <sup>3</sup> / <sub>4</sub> )
CIRCLING	1180-1	551 (600-1)	1200-1 <sup>1</sup> / <sub>2</sub> 571 (600-1 <sup>1</sup> / <sub>2</sub> )	1200-2 571 (600-2)



REIL Rwy 6 **0**  
REIL Rwy 14  
HIRL Rwys 6-24 **0**  
HIRL Rwys 14-32

EC-1, 14 MAY 2026 to 11 JUN 2026

EC-1, 14 MAY 2026 to 11 JUN 2026