

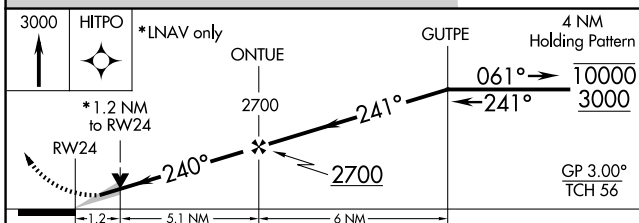
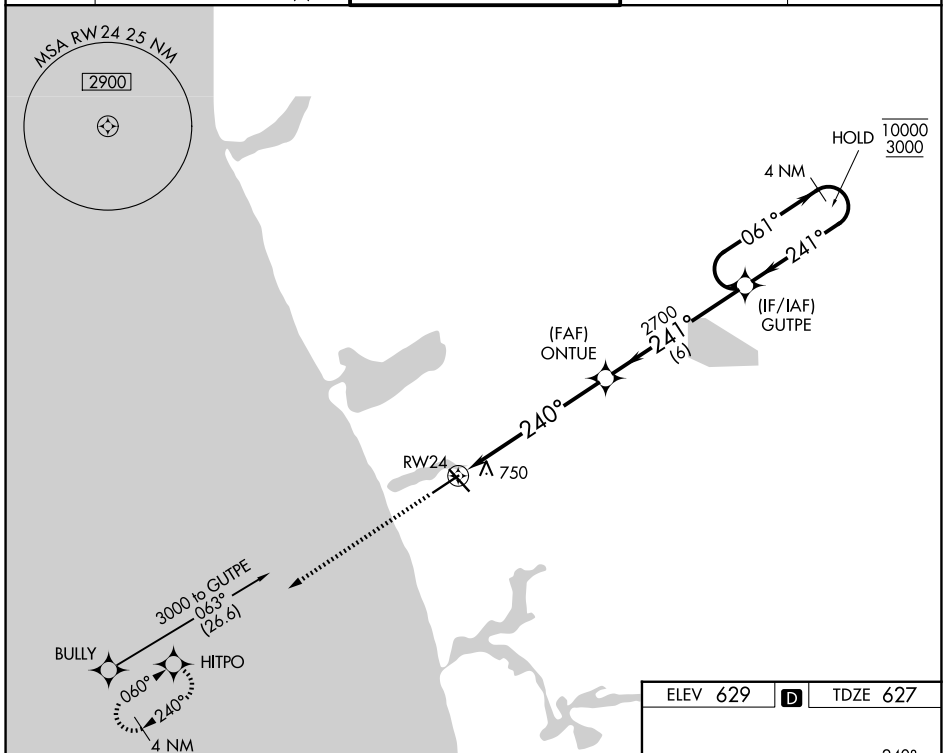
WAAS CH 42918 W24A	APP CRS 240°	Rwy Ldg TDZE Apt Elev	6500 627 629
--	------------------------	-----------------------------	---

RNAV (GPS) RWY 24

MUSKEGON COUNTY (MKG)

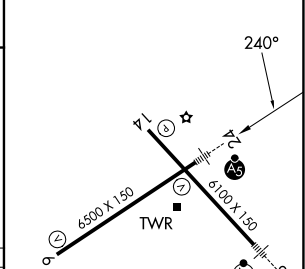
RNP APCH.	MALSR 	MISSED APPROACH: Climb to 3000 direct HITPO and hold.
<p>▽ For uncompensated Baro-VNAV systems, LNAV/VNAV NA below -18°C or above 54°C. For inop ALS, increase LPV visibility all Cats to 3/4 SM, LNAV/VNAV visibility all Cats to 1 3/8 SM, LNAV Cats A/B to 1 SM and LNAV Cats C/D to 1 3/8 SM.</p>		

ATIS 124.3	GREAT LAKES APP CON* 119.8 290.35 (N) 133.825 290.35 (S)	MUSKEGON TOWER* 126.25 (CTAF) 343.725	GND CON 121.6	UNICOM 122.95
----------------------	--	--	-------------------------	-------------------------



CATEGORY	A	B	C	D
LPV DA		827-1/2	200 (200-1/2)	
LNAV/VNAV DA		1092-1	465 (500-1)	
LNAV MDA	1080-1/2	453 (500-1/2)	1080-7/8	453 (500-7/8)
CIRCLING	1080-1 451 (500-1)	1180-1 551 (600-1)	1200-1 1/2 571 (600-1 1/2)	1200-2 571 (600-2)

ELEV 629	D	TDZE 627
----------	----------	----------



REIL Rwy 6 6
REIL Rwy 14
HIRL Rwys 6-24 6
HIRL Rwys 14-32

EC-1, 14 MAY 2026 to 11 JUN 2026

EC-1, 14 MAY 2026 to 11 JUN 2026