

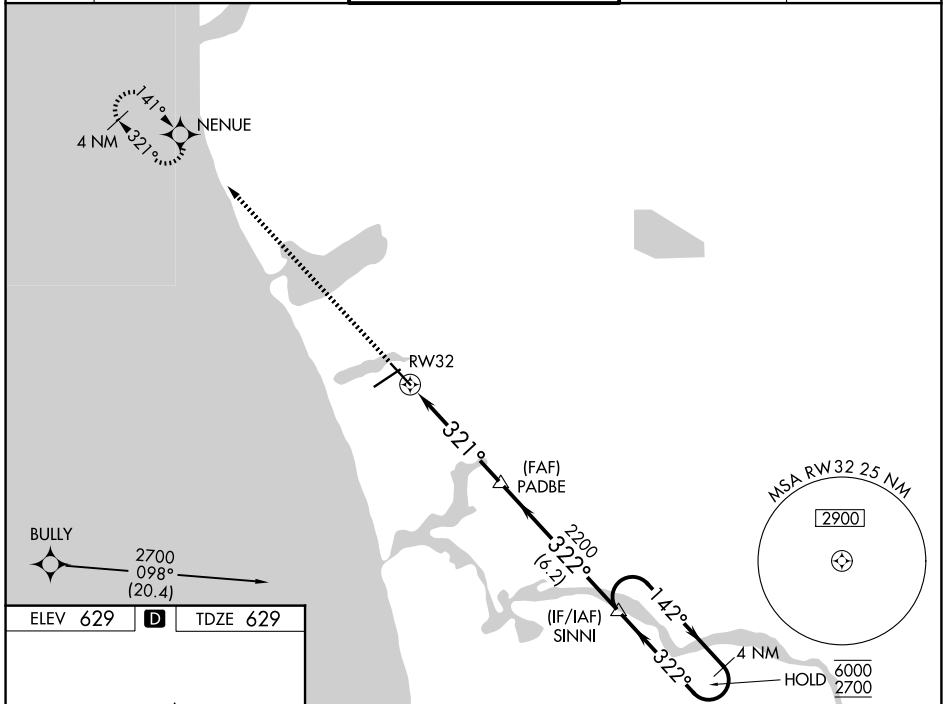
WAAS CH <b>63010</b> <b>W32A</b>	APP CRS <b>321°</b>	Rwy Ldg TDZE Apt Elev	<b>6100</b> <b>629</b> <b>629</b>
--	------------------------	-----------------------------	---

# RNAV (GPS) RWY 32

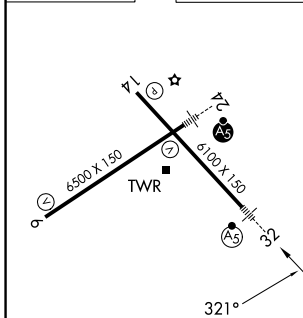
MUSKEGON COUNTY (MKG)

RNP APCH.	MALSRL	MISSED APPROACH: Climb to 2300 direct NENUE and hold.
<p>▼ For uncompensated Baro-VNAV systems, LNAV/VNAV NA below -18° C or above 54°C.</p> <p>▲ For inop ALS, increase LPV visibility all Cats to RVR 4000, LNAV/VNAV visibility all Cats to RVR 4500, and LNAV visibility Cats A/B to RVR 5500 and Cats C/D to 1½ SM.</p> <p>** RVR 1800 authorized with use of FD or AP or HUD to DA, NA when using Fremont altimeter setting.</p>		

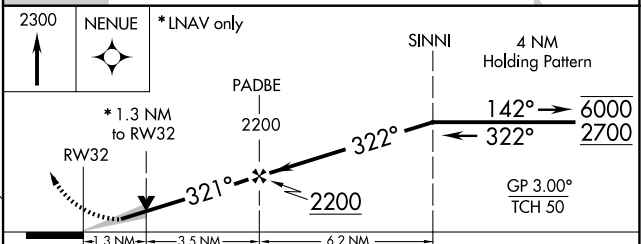
ATIS <b>124.3</b>	GREAT LAKES APP CON * <b>119.8 290.35 (N)</b> <b>133.825 290.35 (S)</b>	MUSKEGON TOWER * <b>126.25 (CTAF) 343.725</b>	GND CON <b>121.6</b>	UNICOM <b>122.95</b>
----------------------	---	--	-------------------------	-------------------------



ELEV 629	<b>D</b>	TDZE 629
----------	----------	----------



REIL Rwy 6 **6**  
REIL Rwy 14  
HIRL Rwys 6-24 **1**  
HIRL Rwys 14-32



CATEGORY	A	B	C	D
LPV DA**		829/24	200 (200-½)	
LNAV/VNAV DA		915/24	286 (300-½)	
LNAV MDA	1080/24	451 (500-½)	1080/45	451 (500-¾)
CIRCLING	1080-1 451 (500-1)	1180-1 551 (600-1)	1200-1½ 571 (600-1½)	1200-2 571 (600-2)

EC-1, 14 MAY 2026 to 11 JUN 2026

EC-1, 14 MAY 2026 to 11 JUN 2026