

WAAS CH <b>56618</b> <b>W06A</b>	APP CRS <b>060°</b>	Rwy Ldg TDZE Apt Elev	<b>6500</b> <b>623</b> <b>629</b>
--	------------------------	-----------------------------	---

# RNAV (GPS) RWY 6

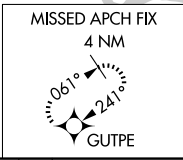
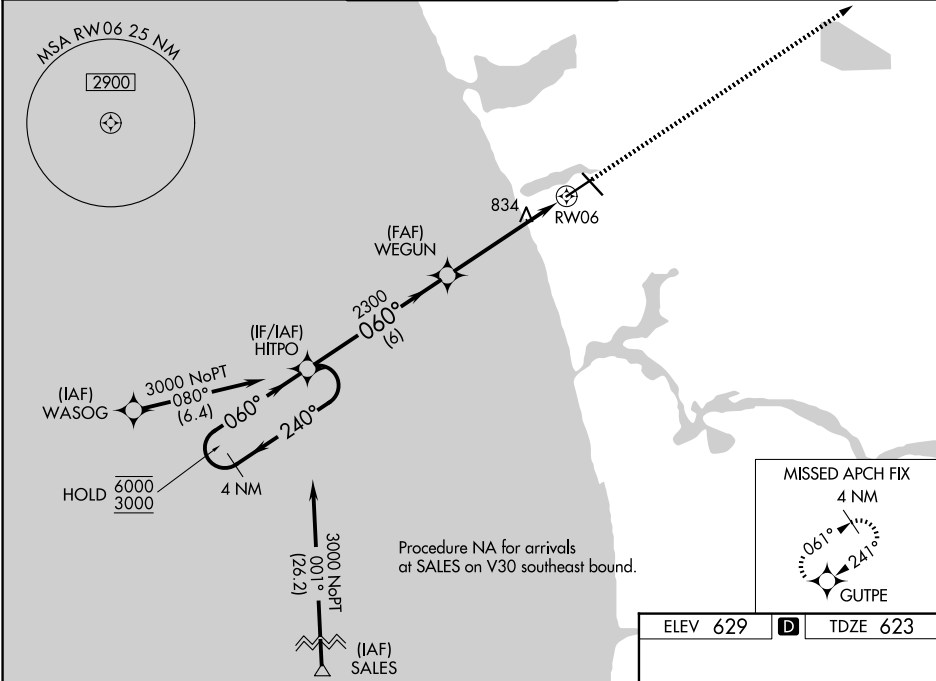
MUSKEGON COUNTY (MKG)

RNP APCH.

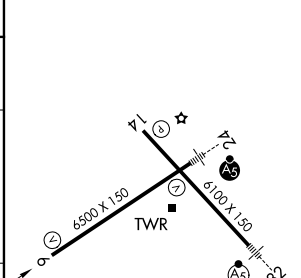
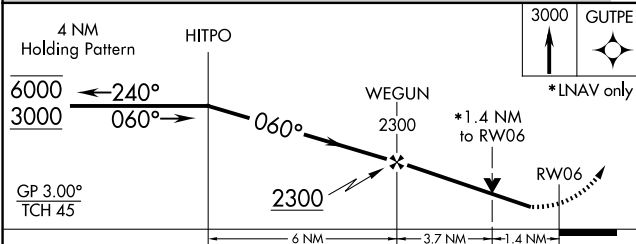
**⚠** Rwy 6 helicopter visibility reduction below 3/4 SM NA. For uncompensated Baro-VNAV systems, LNAV/VNAV NA below -18°C or above 54°C.

MISSED APPROACH: Climb to 3000 direct GUTPE and hold.

ATIS <b>124.3</b>	GREAT LAKES APP CON* <b>119.8 290.35</b> (N) <b>133.825 290.35</b> (S)	MUSKEGON TOWER* <b>126.25</b> (CTAF) <b>0 343.725</b>	GND CON <b>121.6</b>	UNICOM <b>122.95</b>
----------------------	--	--	-------------------------	-------------------------



ELEV 629	<b>D</b>	TDZE 623
----------	----------	----------



CATEGORY	A	B	C	D
LPV DA	928-7/8 305 (300-7/8)			
LNAV/VNAV DA	975-1 352 (400-1)			
LNAV MDA	1100-1 477 (500-1)	1100-1 3/8 477 (500-1 3/8)		
CIRCLING	1100-1 471 (500-1)	1180-1 551 (600-1)	1200-1 1/2 571 (600-1 1/2)	1200-2 571 (600-2)

REIL Rwy 6 **0**  
 REIL Rwy 14  
 HIRL Rwys 6-24 **0**  
 HIRL Rwys 14-32

EC-1, 14 MAY 2026 to 11 JUN 2026

EC-1, 14 MAY 2026 to 11 JUN 2026