

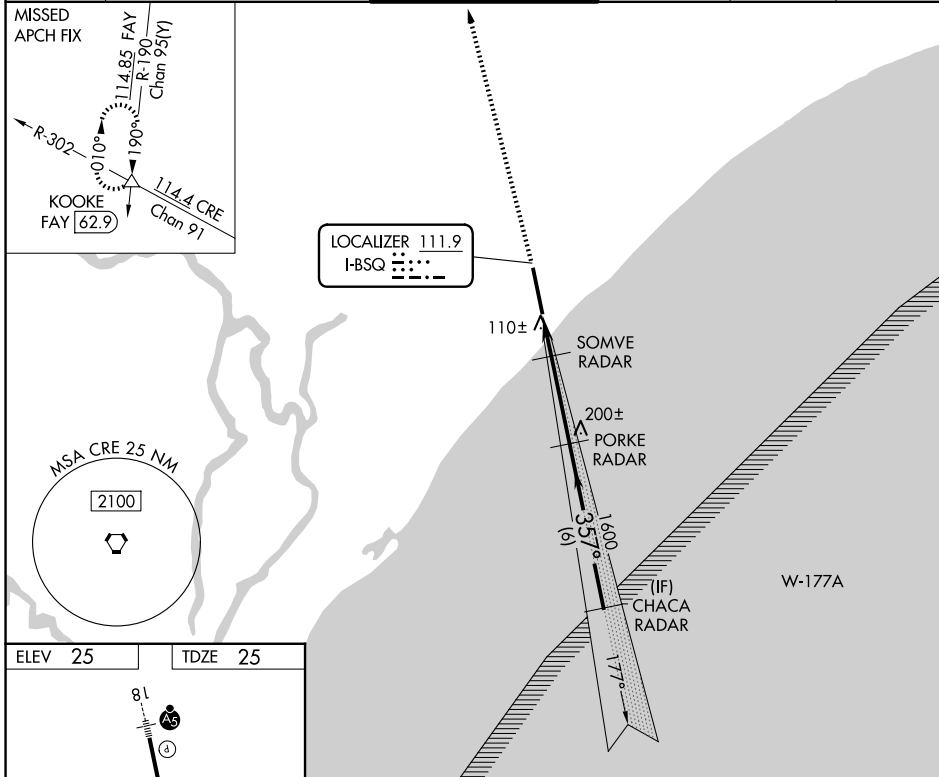
LOC I-BSQ <b>111.9</b>	APP CRS <b>357°</b>	Rwy Ldg TDZE Apt Elev	<b>9503</b> <b>25</b> <b>25</b>
---------------------------	------------------------	-----------------------------	---------------------------------------

# ILS or LOC RWY 36

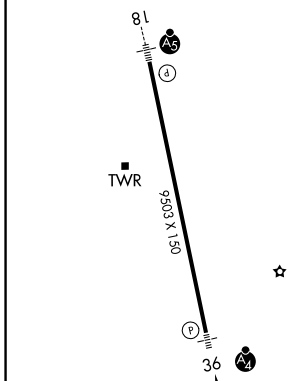
MYRTLE BEACH INTL (MYR)

RADAR required.		MALSF	MISSED APPROACH: Climb to 3000 on heading 357° expect RADAR vectors to KOOKE INT/FAY 62.9 DME and hold.
For inop ALS increase S-LOC 36 Cats D/E visibility to RVR 5000.			

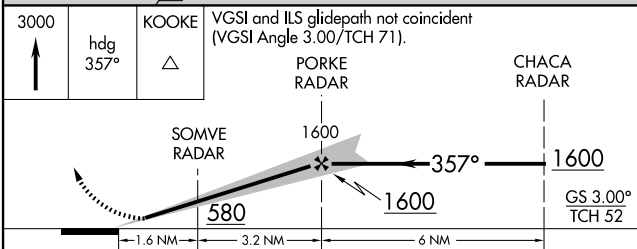
ATIS <b>123.925</b>	MYRTLE BEACH APP CON ★ (171° - 321°) <b>127.4 257.95</b> (322° - 170°) <b>119.2 350.3</b>	MYRTLE BEACH TOWER ★ <b>128.45 (CTAF) 259.3</b>	GND CON <b>120.3 275.8</b>	CLNC DEL <b>120.3</b>	UNICOM <b>122.95</b>
------------------------	---	--	-------------------------------	--------------------------	-------------------------



ELEV 25	TDZE 25
---------	---------



FAF to MAP 4.8 NM					
Knots	60	90	120	150	180
Min:Sec	4:48	3:12	2:24	1:55	1:36



CATEGORY	A	B	C	D	E
S-ILS 36	225/40 200 (200-¾)				
S-LOC 36	360/40 335 (400-¾)				
CIRCLING	560-1 535 (600-1)	700-2 675 (700-2)	700-2¼ 675 (700-2¼)	700-2½ 675 (700-2½)	

SE-2, 14 MAY 2026 to 11 JUN 2026

SE-2, 14 MAY 2026 to 11 JUN 2026