

TAKEOFF MINIMUMS

Rwys 19L/R: Standard.

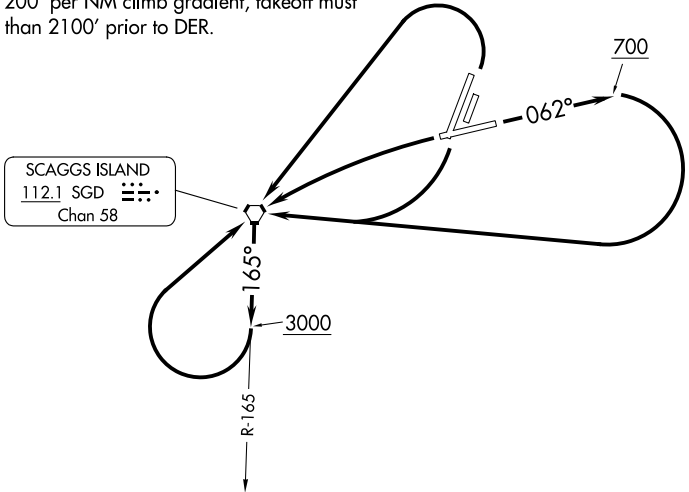
Rwy 1L: Standard with minimum climb of 310' per NM to 900 or 2400-3 for VCOA.

Rwy 1R: Standard with minimum climb of 360' per NM to 700 or 2400-3 for VCOA.

Rwy 6: Standard with minimum climb of 440' per NM to 1700 or 2400-3 for VCOA.

Rwy 24: 300-1½ or standard with minimum climb of 255' per NM to 300, or alternatively, with standard takeoff minimums and a normal 200' per NM climb gradient, takeoff must occur no later than 2100' prior to DER.

OAKLAND CENTER
127.8 353.5
ATIS
124.05
GND CON
121.7
CLNC DEL
127.85
NAPA TOWER*
118.7 (CTAF) 257.8



(CONTINUED ON FOLLOWING PAGE)

NOTE: Chart not to scale.

DEPARTURE ROUTE DESCRIPTION

TAKEOFF RUNWAY 6: Climb on heading 062° to 700, then turn right direct SGD VORTAC, thence. . . .

TAKEOFF RUNWAYS 1L/R, 24: Turn left direct SGD VORTAC, thence. . . .

TAKEOFF RUNWAYS 19L/R: Turn right direct SGD VORTAC, thence. . . .

VCOA RUNWAYS 1L/R, 6: Obtain ATC approval for VCOA when requesting IFR clearance. Climb in visual conditions to cross Napa County Airport at or above 2300, then direct SGD VORTAC, thence. . . .

. . . .aircraft departing SGD VORTAC on R-165 climb on course. All other aircraft continue climb on SGD VORTAC R-165 to 3000, then turn right direct SGD VORTAC before proceeding on course.

TAKEOFF OBSTACLE NOTES

- Rwy 1L: Terrain beginning 7' from DER, 340' left of centerline up to 37' MSL.
 - Lighting 10' from DER, 51' right of centerline, 1' AGL/30' MSL.
 - Vehicles on road beginning 105' from DER, 317' right of centerline, up to 41' MSL.
 - Vehicles on road and terrain, beginning 105' from DER, 298' left of centerline, up to 43' MSL.
 - Vehicles on road 203' from DER, 300' left of centerline, 44' MSL.
 - Vehicles on road beginning 363' from DER, 302' left of centerline, up to 45' MSL.
 - Vehicles on road 559' from DER, 544' right of centerline, 44' MSL.
 - Trees beginning 3205' from DER, 790' right of centerline, up to 124' MSL.
 - Trees beginning 4610' from DER, 306' right of centerline, up to 168' MSL.
 - Tree 1.1 NM from DER, 2025' right of centerline, 226' MSL.
 - Trees beginning 1.1 NM from DER, 1674' right of centerline, up to 249' MSL.
 - Tree 1.1 NM from DER, 1839' right of centerline, 253' MSL.
 - Trees and terrain beginning 1.1 NM from DER, 1648' right of centerline, up to 282' MSL.
 - Trees, terrain and fence beginning 1.1 NM from DER, 1634' right of centerline, up to 298' MSL.
 - Tree and fence beginning 1.7 NM from DER, 3269' right of centerline, up to 345' MSL.
 - Electrical system, terrain, fence and tree beginning 1.8 NM from DER, 606' right of centerline, up to 129' AGL/446' MSL.
 - Trees and terrain beginning 2 NM from DER, 542' right of centerline, up to 526' MSL.
 - Terrain, fence and tree beginning 2 NM from DER, 1089' right of centerline, up to 528' MSL.
 - Fence, trees, terrain and building beginning 2.1 NM from DER, 2007' right of centerline, up to 5' AGL/554' MSL.
 - Terrain and trees beginning 2.1 NM from DER, 2139' right of centerline, up to 581' MSL.
 - Tree 2.2 NM from DER, 3913' right of centerline, 585' MSL.
 - Trees, terrain and fence, beginning 2.2 NM from DER, 2013' right of centerline, up to 587' MSL.
 - Trees and terrain beginning 2.3 NM from DER, 2566' right of centerline, up to 599' MSL.
- Rwy 1R: Lighting 43' from DER, 493' right of centerline, 1' AGL/25' MSL.
 - Sign 51' from DER, 420' left of centerline, 2' AGL/23' MSL.
 - Poles and vehicles on road beginning 262' from DER, 63' right of centerline, up to 36' AGL/59' MSL.
 - Vehicles on road 639' from DER, 436' left of centerline, 38' MSL.
 - Vehicles on road beginning 640' from DER, 95' left of centerline, up to 39' MSL.
 - Tree 812' from DER, 673' right of centerline, 70' MSL.
 - Tree 1870' from DER, 470' right of centerline, 71' MSL.
 - Tree 1.2 NM from DER, 2507' right of centerline, 240' MSL.
 - Tree 1.2 NM from DER, 2314' right of centerline, 243' MSL.
 - Trees beginning 1.2 NM from DER, 2143' right of centerline, up to 286' MSL.
 - Trees, fence and terrain beginning 1.3 NM from DER, 2073' right of centerline, up to 309' MSL.
 - Tree 1.3 NM from DER, 2552' right of centerline, 322' MSL.
 - Trees and terrain beginning 1.3 NM from DER, 1204' right of centerline, up to 368' MSL.
 - Trees, terrain and fence beginning 1.4 NM from DER, 1286' right of centerline, up to 391' MSL.
 - Trees beginning 1.4 NM from DER, 1312' right of centerline, up to 400' MSL.
 - Trees, terrain, building and fence beginning 1.4 NM from DER, 2008' right of centerline, up to 417' MSL.
 - Electrical system, fence and terrain beginning 2.1 NM from DER, 2329' right of centerline, up to 129' AGL/446' MSL.
 - Transmission line 2.2 NM from DER, 3214' right of centerline, 123' AGL/542' MSL.
 - Electrical system, fence, pole, terrain and trees beginning 2.2 NM from DER, 1515' right of centerline, up to 116' AGL/544' MSL.
 - Terrain and fence beginning 2.3 NM from DER, 2076' right of centerline, up to 551' MSL.
 - Trees, fence, terrain and building beginning 2.3 NM from DER, 1494' right of centerline, up to 561' MSL.
 - Terrain and tree beginning 2.4 NM from DER, 1626' right of centerline, up to 581' MSL.
 - Terrain and tree beginning 2.4 NM from DER, 2067' right of centerline, up to 612' MSL.
 - Terrain and trees beginning 2.4 NM from DER, 2564' right of centerline, up to 643' MSL.
 - Tree 2.4 NM from DER, 3917' right of centerline, 671' MSL.
 - Trees beginning 2.5 NM from DER, 1954' right of centerline, up to 687' MSL.

(CONTINUED ON FOLLOWING PAGE)

SW-2, 14 MAY 2026 to 11 JUN 2026

SW-2, 14 MAY 2026 to 11 JUN 2026

(CONTINUED)

TAKEOFF OBSTACLE NOTES

Rwy 6: Pole 1' from DER, 59' left of centerline, 3' AGL/37' MSL.
 Pole 2' from DER, 60' right of centerline, 2' AGL/36' MSL.
 Pole 98' from DER, 480' left of centerline, 34' AGL/67' MSL.
 Pole 333' from DER, 476' left of centerline, 34' AGL/68' MSL.
 Pole and vehicles on road beginning 573' from DER, 0' left of centerline, up to 33' AGL/69' MSL.
 Building 773' from DER, 660' right of centerline, 29' AGL/70' MSL.
 Buildings and pole beginning 1104' from DER, 472' right of centerline, up to 37' AGL/80' MSL.
 Trees beginning 1288' from DER, 516' left of centerline, up to 98' MSL.
 Trees beginning 2082' from DER, 98' right of centerline, up to 113' MSL.
 Trees beginning 2306' from DER, 53' right of centerline, up to 130' MSL.
 Tree 4681' from DER, 1103' left of centerline, 180' MSL.
 Trees beginning 4859' from DER, 1063' left of centerline, up to 187' MSL.
 Terrain 5855' from DER, 2050' right of centerline, 195' MSL.
 Trees and fence beginning 5865' from DER, 1761' left of centerline, up to 211' MSL.
 Trees, terrain and fence beginning 6068' from DER, 1419' right of centerline, up to 281' MSL.
 Tree 1 NM from DER, 2035' left of centerline, 212' MSL.
 Trees beginning 1 NM from DER, 1796' left of centerline, up to 224' MSL.
 Tree 2 NM from DER, 2933' left of centerline, 340' MSL.
 Tree 2 NM from DER, 2803' left of centerline, 359' MSL.
 Trees beginning 2.1 NM from DER, 3827' right of centerline, up to 386' MSL.
 Terrain 2.2 NM from DER, 3202' right of centerline, up to 405' MSL.
 Terrain beginning 2.3 NM from DER, 911' right of centerline, up to 464' MSL.
 Fence and terrain beginning 2.4 NM from DER, 3273' left of centerline, up to 4' AGL/452' MSL.
 Terrain 2.4 NM from DER, 3353' left of centerline, 457' MSL.
 Terrain and trees beginning 2.4 NM from DER, 61' left of centerline, up to 525' MSL.
 Fence beginning 2.5 NM from DER, 100' right of centerline, up to 6' AGL/519' MSL.

Rwy 19L: Sign and terrain beginning 14' from DER, 125' left of centerline, up to 2' AGL/14' MSL.
 Lighting 15' from DER, 429' right of centerline, 1' AGL/14' MSL.
 Terrain 49' from DER, 483' left of centerline, 17' MSL.
 Navaid 1278' from DER, 816' left of centerline, 35' AGL/52' MSL.
 Tree 3852' from DER, 1304' left of centerline, 111' MSL.

Rwy 19R: Lighting 9' from DER, 4' left of centerline, 1' AGL/15' MSL.
 Pole 10' from DER, 44' right of centerline, 1' AGL/15' MSL.
 Lighting 10' from DER, 96' left of centerline, 3' AGL/17' MSL.
 Vehicles on road beginning 350' from DER, 584' left of centerline, up to 34' MSL.
 Tree 3158' from DER, 764' left of centerline, 101' MSL.
 Tree 3503' from DER, 1006' left of centerline, 104' MSL..

Rwy 24: Vehicles on road and general utility beginning 56' from DER, 125' right of centerline, up to 21' MSL.
 General utility 59' from DER, 122' left of centerline, 4' AGL/17' MSL.
 Vehicles on road beginning 60' from DER, 18' left of centerline, up to 25' MSL.
 Vehicles on road beginning 167' from DER, 9' right of centerline, up to 22' MSL.
 Vehicles on road beginning 354' from DER, 259' right of centerline, up to 26' MSL.
 Trees beginning 1455' from DER, 776' left of centerline, up to 76' MSL.
 Trees beginning 2324' from DER, 540' left of centerline, up to 90' MSL.
 Tree 2650' from DER, 527' left of centerline, 93' MSL.
 Tree 4552' from DER, 554' left of centerline, 135' MSL.
 Vehicles on road and bridge beginning 4943' from DER, 1631' right of centerline, up to 165' AGL/170' MSL.

SW-2, 14 MAY 2026 to 11 JUN 2026

SW-2, 14 MAY 2026 to 11 JUN 2026