

RNAV (GPS) RWY 19R

NAPA COUNTY (APC)

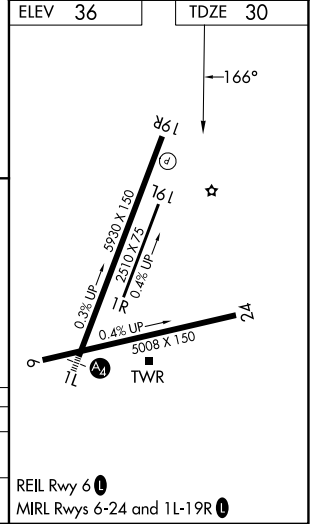
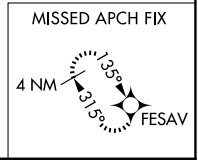
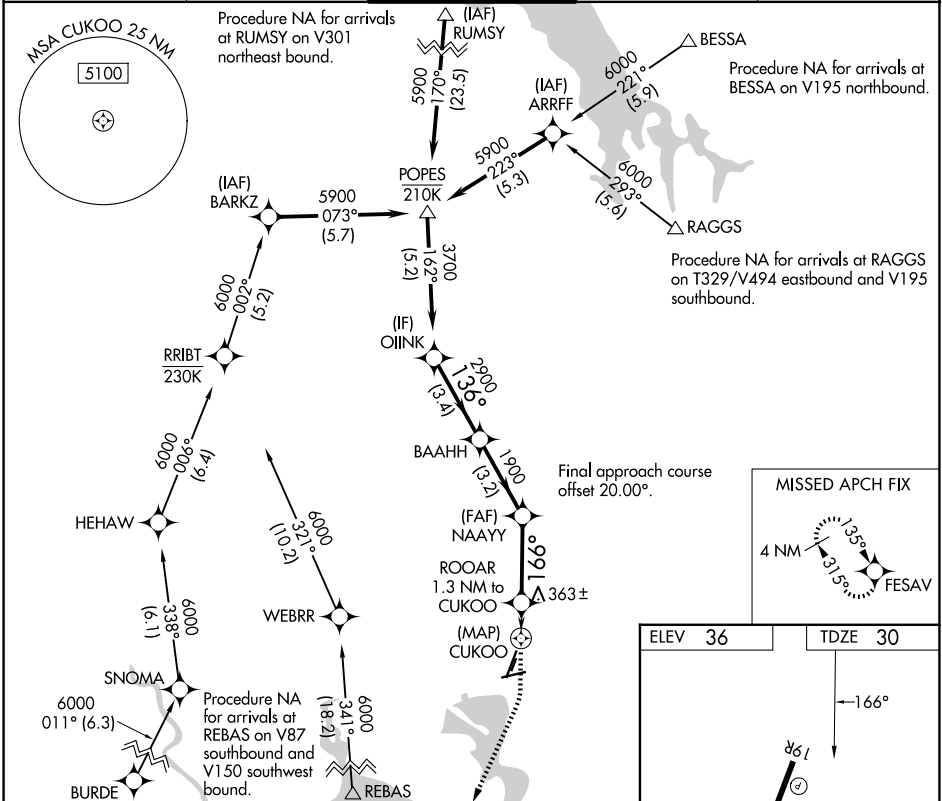
APP CRS	Rwy Ldg	5930
166°	TDZE	30
	Apt Elev	36

RNP APCH - GPS.

▼ Rwy 19R helicopter visibility reduction below 3/4 SM NA.
▲ Circling Cats A/B/C NA east of Rwy 19R and northwest of Rwy 24. Circling Cat D NA east of Rwy 19L-1R.

MISSED APPROACH: Climb to 700 then climbing right turn to 3000 direct FESAV and hold.

ATIS 124.05	OAKLAND CENTER 127.8 353.5	NAPA TOWER* 118.7 (CTAF) 257.8	GND CON 121.7	UNICOM 122.95
-----------------------	--------------------------------------	--	-------------------------	-------------------------



700	3000	FESAV	VGSi and descent angles not coincident (VGSi Angle 3.25/TCH 52).		OIINK
			NAAYY	BAAHH	3700
		ROOAR 1.3 NM to CUKOO	1900	2900	136°
		CUKOO	740		166°
	0.5	1.3 NM	3.1 NM	3.2 NM	3.4 NM
CATEGORY	A	B	C	D	
LNVA MDA	680-1	650 (700-1)	680-1 7/8	650 (700-1 7/8)	
CIRCLING	680-1	644 (700-1)	1280-3 1244 (1300-3)	1300-3 1264 (1300-3)	

SW-2, 14 MAY 2026 to 11 JUN 2026

SW-2, 14 MAY 2026 to 11 JUN 2026