

WAAS CH 40313 W01B	APP CRS 006°	Rwy Ldg 5930 TDZE 17 Apt Elev 36
--	------------------------	--

RNAV (GPS) Z RWY 1L

NAPA COUNTY (APC)

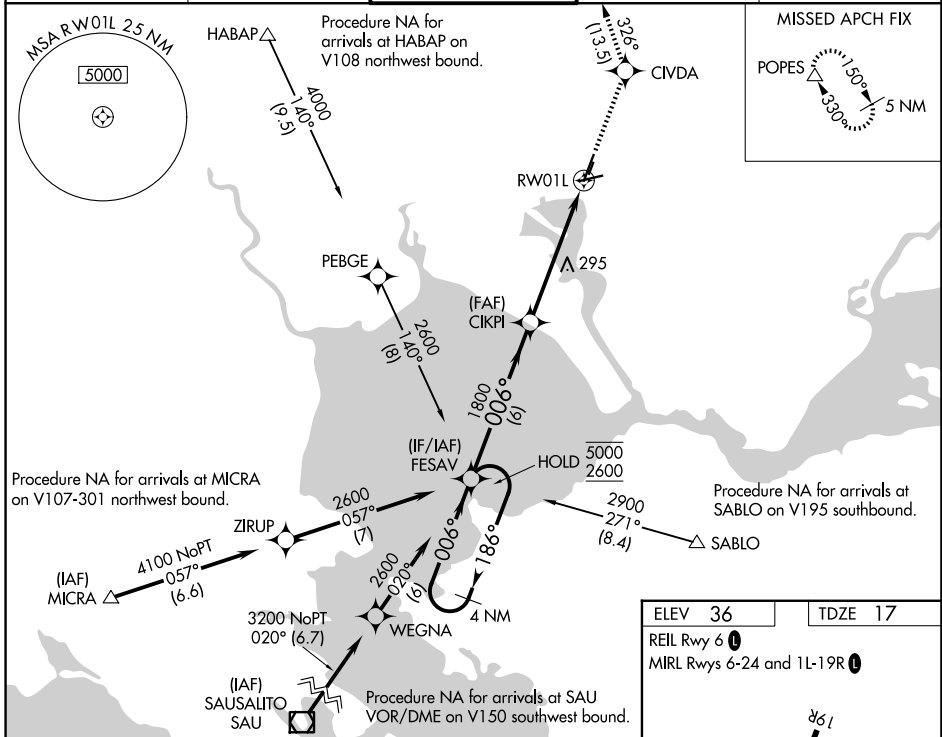
RNP APCH - GPS.

⚠ For uncompensated Baro-VNAV systems, LNAV/VNAV NA below -2°C or above 54°C. Inop table does not apply to LPV minimums. For inop ALS, increase LNAV/VNAV all Cats visibility to ½ SM.

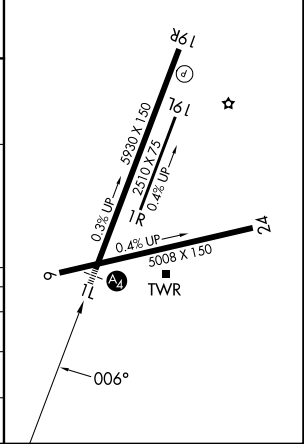
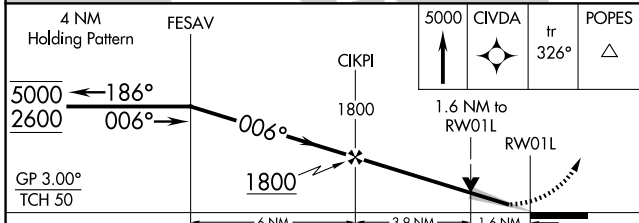
MALS

MISSED APPROACH: Climb to 5000 direct CIVDA and on track 326° to POPES and hold. Missed approach requires minimum climb of 420 feet per NM to 2200; if unable to meet climb gradient, see RNAV (GPS) Y RWY 1L.

ATIS 124.05	OAKLAND CENTER 127.8 353.5	NAPA TOWER* 118.7 (CTAF) 257.8	GND CON 121.7	UNICOM 122.95
-----------------------	--------------------------------------	---	-------------------------	-------------------------



ELEV 36	TDZE 17
REIL Rwy 6	MIRL Rwys 6-24 and 1L-19R



CATEGORY	A	B	C	D
LPV DA		217-¾	200 (200-¾)	
LNAV/VNAV DA		330-¾	313 (300-¾)	
LNAV MDA	560-¾	543 (600-¾)	560-1¾	543 (600-1¾)

SW-2, 14 MAY 2026 to 11 JUN 2026

SW-2, 14 MAY 2026 to 11 JUN 2026